

El Dorado County Fire Protection District

2008 ANNUAL REPORT



Bruce M. Lacher, Fire Chief



Service with Pride, Trust and Integrity

Board of Director's

- | | | |
|-------------------|------------|-----------|
| • Dennis Edwards | Division 1 | 2008-2012 |
| • Joe Rose | Division 2 | 2006-2010 |
| • Curtiss Weidmer | Division 3 | 2006-2010 |
| • Thomas Mahach | Division 4 | 2004-2012 |
| • Edward Courtial | Division 5 | 2004-2012 |

Committees

Administrative:

Ed Courtial / Curtiss Weidmer

Fire/EMS Operations (JPA):

Curtiss Weidmer / Ed Courtial

Fire Safe:

Tom Mahach

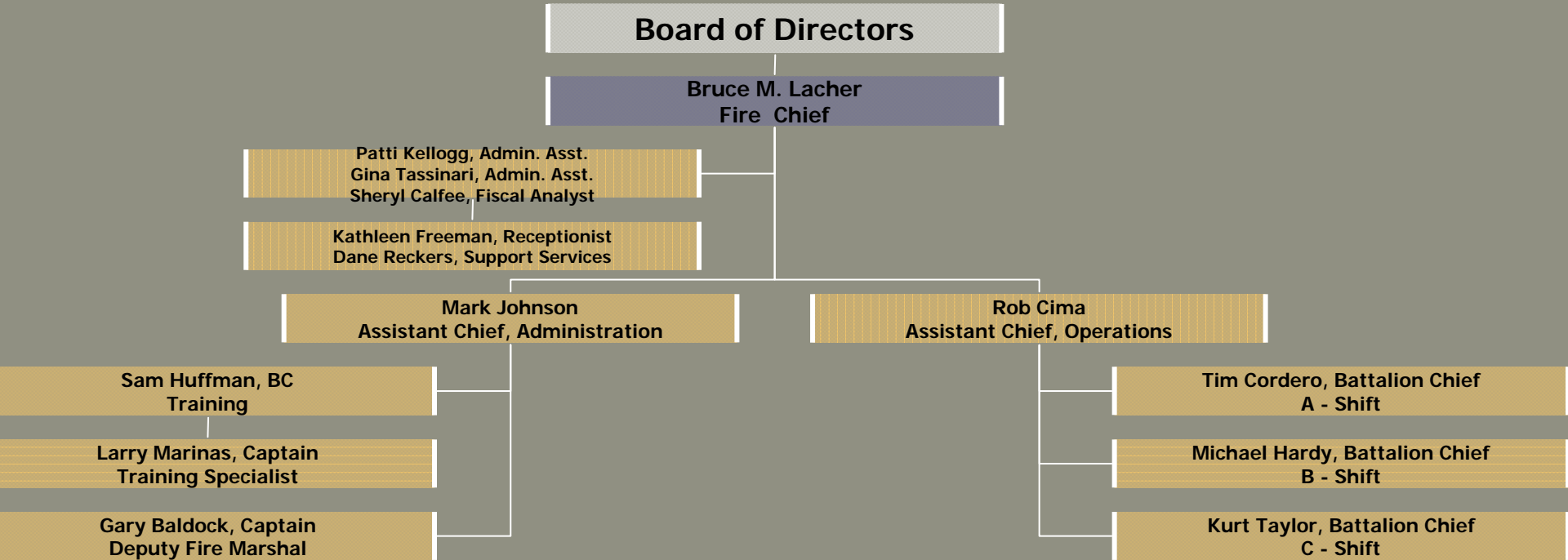
Apparatus and Facilities:

Joe Rose

Salary & Benefits:

Curtiss Weidmer / Tom Mahach

Organizational Chart

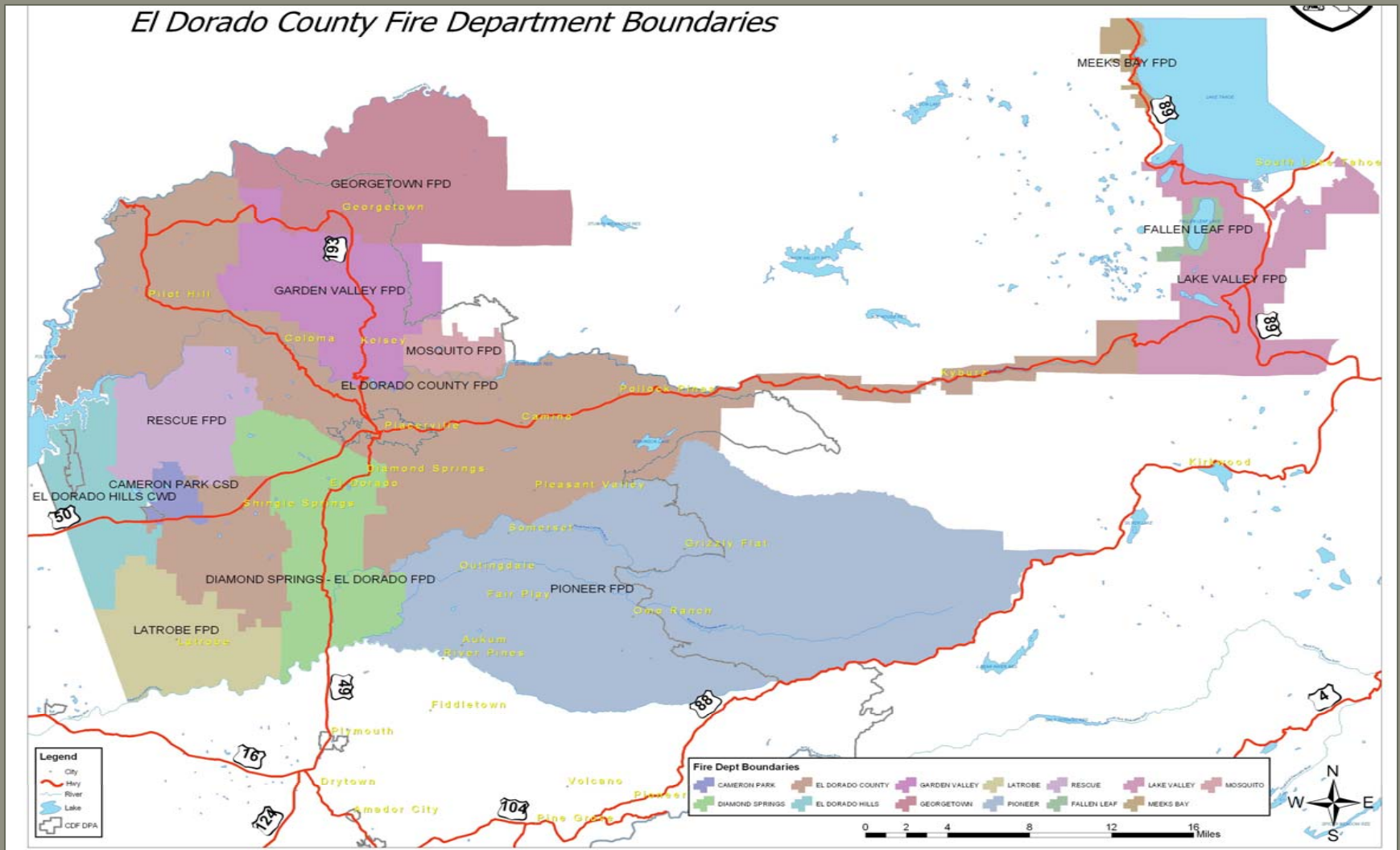


The Fire District

- The fire district protects approximately 77,000 residents living in the districts' 281 square miles, including approximately 20 square miles of urban area. Proudly serving the City of Placerville and the communities of Apple Hill, Auburn Lake Trails, Camino, Coloma, Cool, Gold Hill, Kyburz, Lotus, Oak Hill, Pacific House, Pilot Hill, Pleasant Valley, Pollock Pines, Shingle Springs, Shingle Springs Rancheria/Red Hawk Casino, Silver Fork, Strawberry and Texas Hill.

Boundary Map

El Dorado County Fire Department Boundaries



Mission Statement

- Our personnel are “Dedicated to provide an all-risk service to our citizens that results in improved quality of life and peace of mind. As a team, we will strive to minimize loss and suffering through our emergency service delivery, public education and community service activities. We will provide this service with Pride, Trust and Integrity.”

**89 Uniform Personnel
(48 Paramedics)
(41 EMT's)
9 Support Staff
25 +/- Volunteer's**

**7- 24 hr. Staffed Engine Companies 2 Person Minimum Staffing
4 - 24 hr. Staffed ALS Medic Units 1 - 12 hr Staffed ALS Medic Unit**



Special District Programs

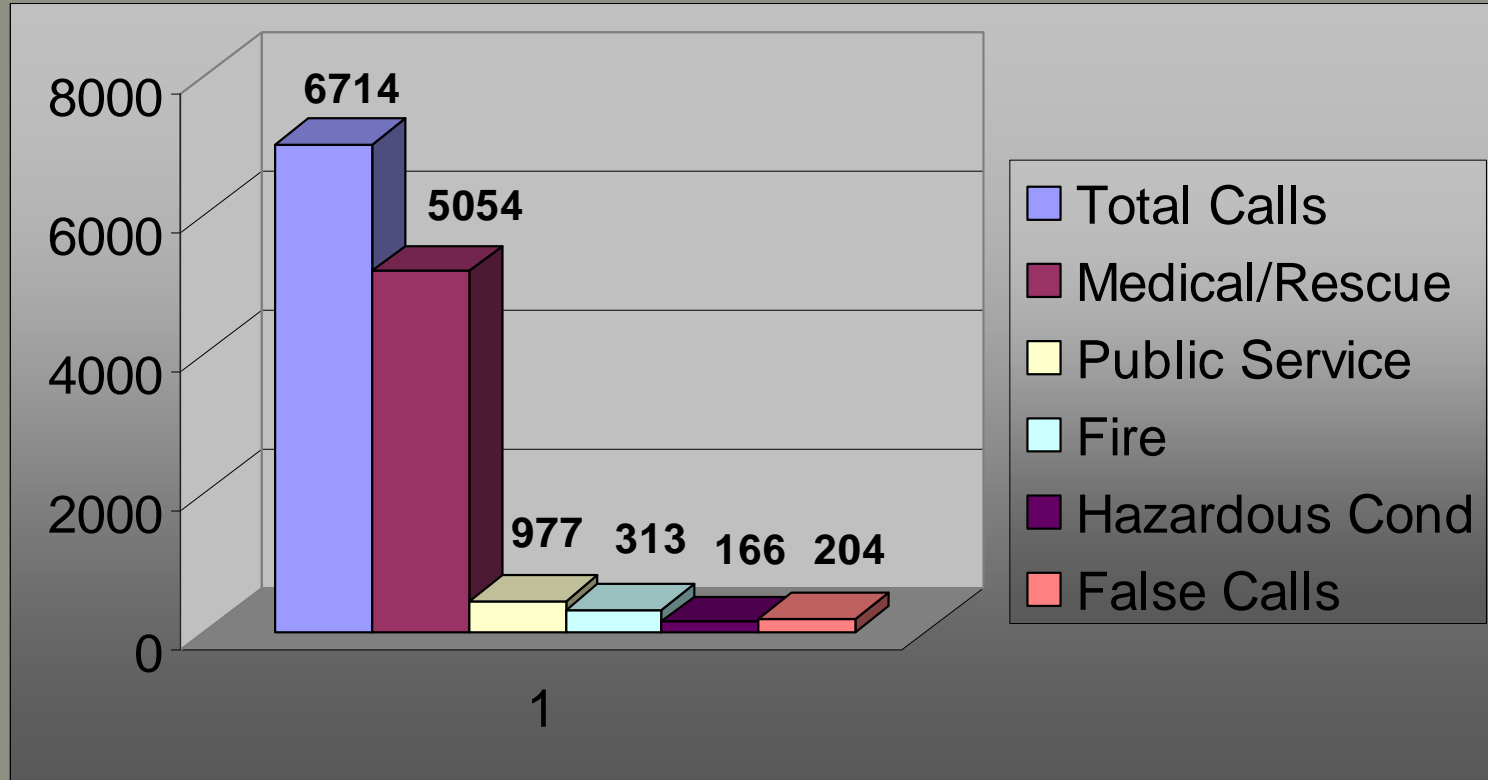
- Explorer Post #1000
- High School ROP Ride-Along
- Honor Guard
- FEMA USAR Task Force 7
- Arson Task Force
- Tactical Medics / S.O. & P.D. SWAT Teams
- Every 15 Minutes (Anti-Drinking & Driving Program)
- Smoke Detector Give-Away
- Critical Incident Stress Debriefing Team
- Safe Baby Surrender Sites
- Juvenile Firesetter Counseling
- Public Education
- LE-38 Exterior Home Safety Inspections

Honor Guard

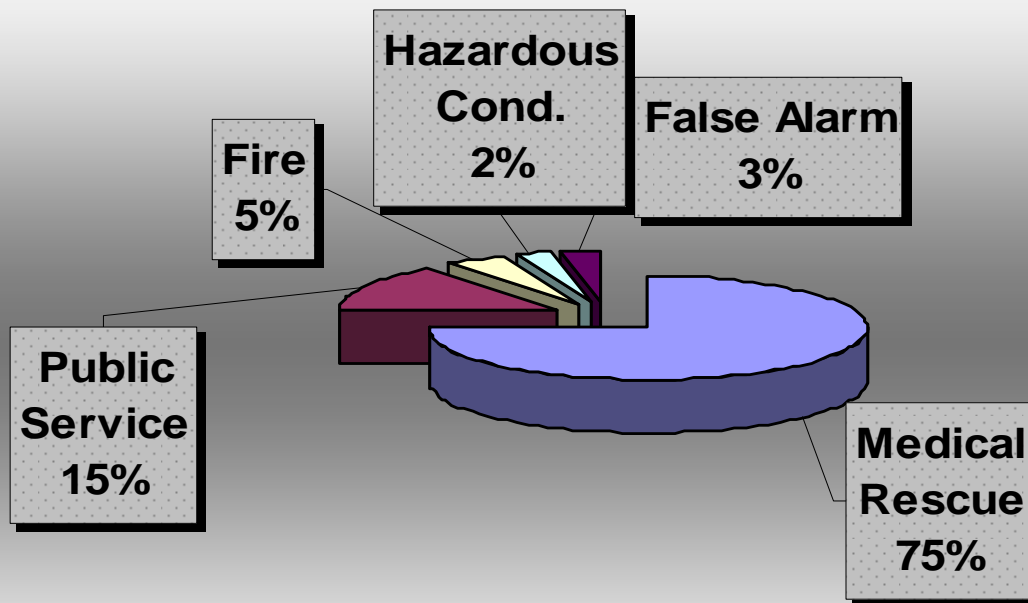


Members: Hardy, Harris, Lohan, Baldock, Parker, Pott, Johnson, Dutch

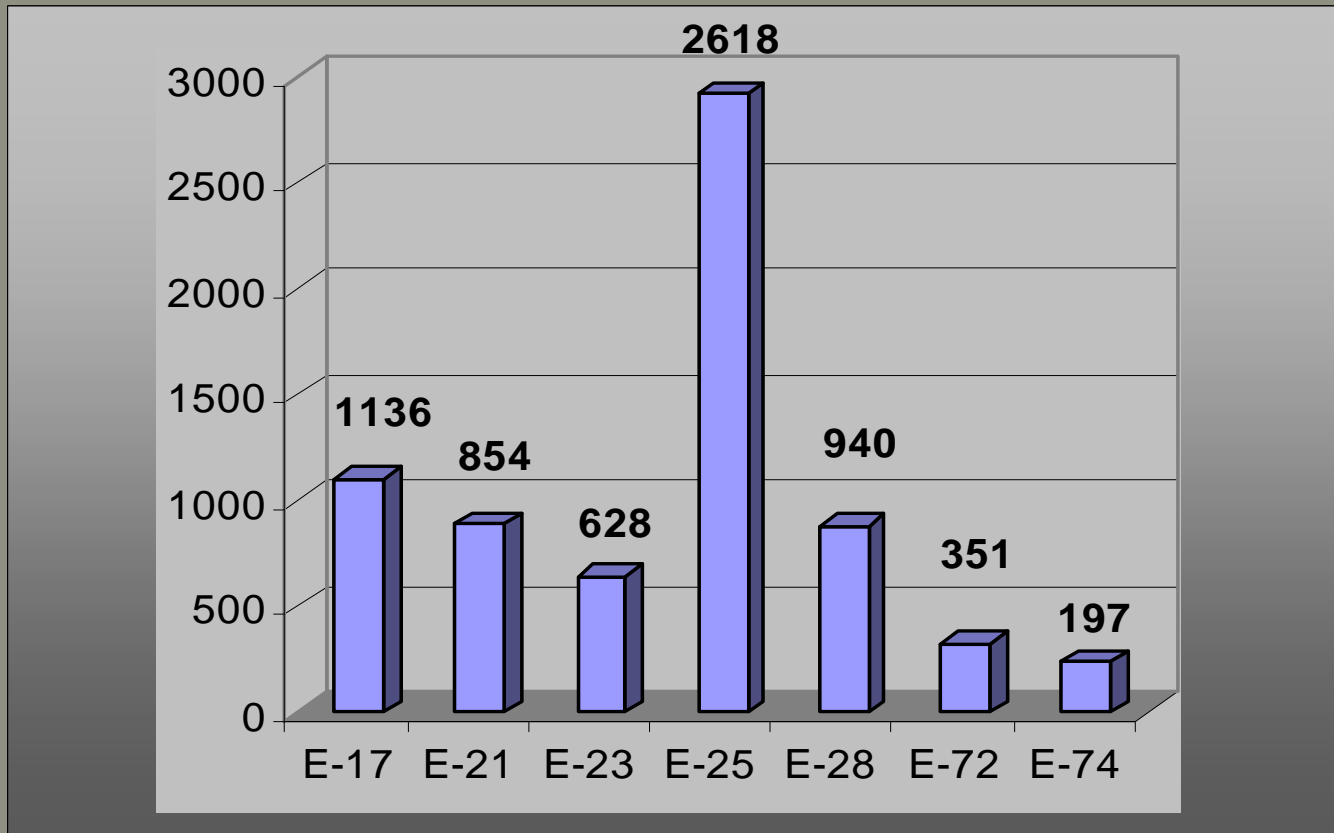
Incident Response Summary



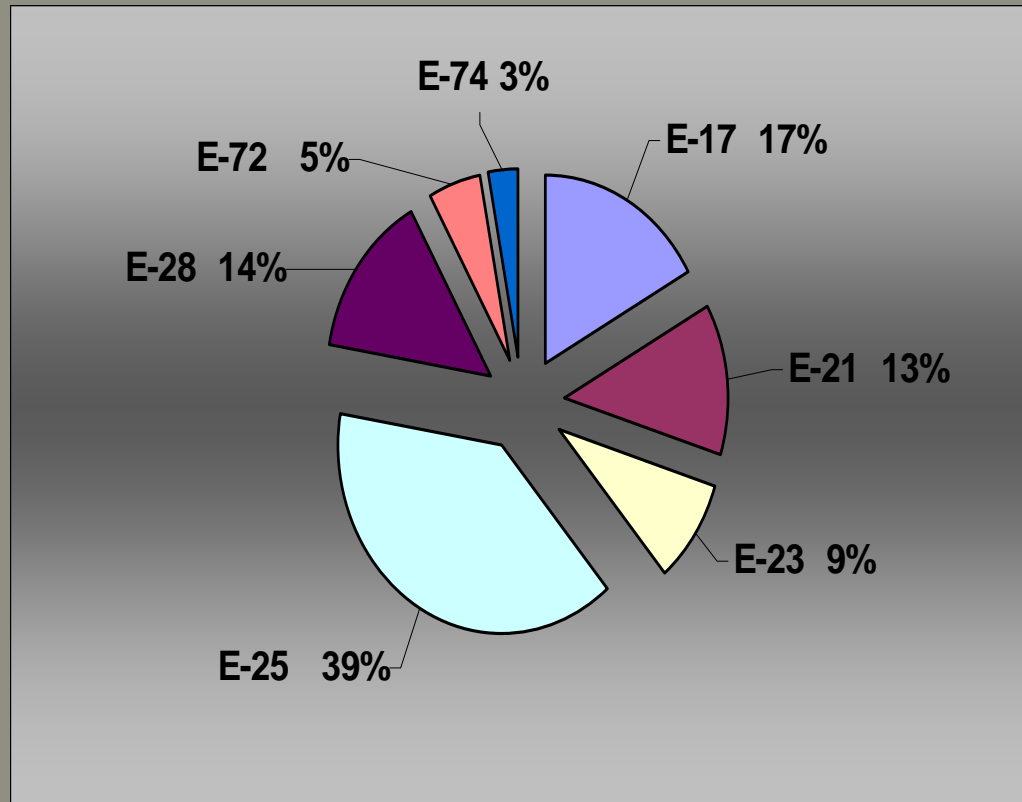
Incident Percentage



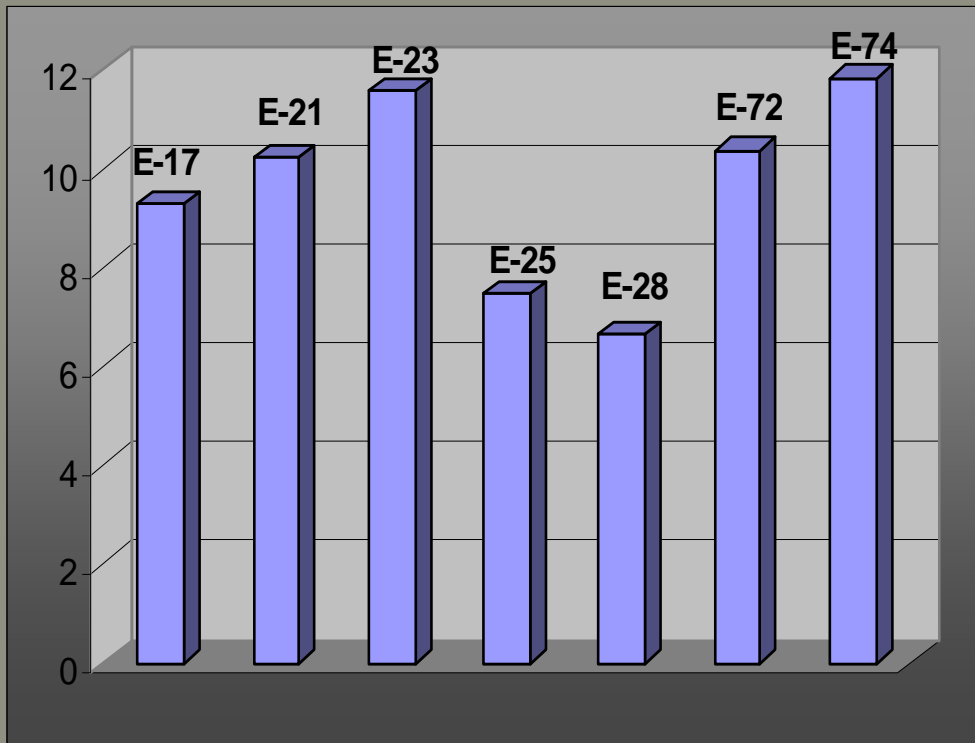
Response by Engine Company



Percentage by Engine Company



Engine Response Time



| | |
|------|-------|
| E-17 | 9.28 |
| E-21 | 10.23 |
| E-23 | 11.58 |
| E-25 | 7.47 |
| E-28 | 6.64 |
| E-72 | 10.36 |
| E-74 | 11.84 |

2008/2009 Revenue Sources

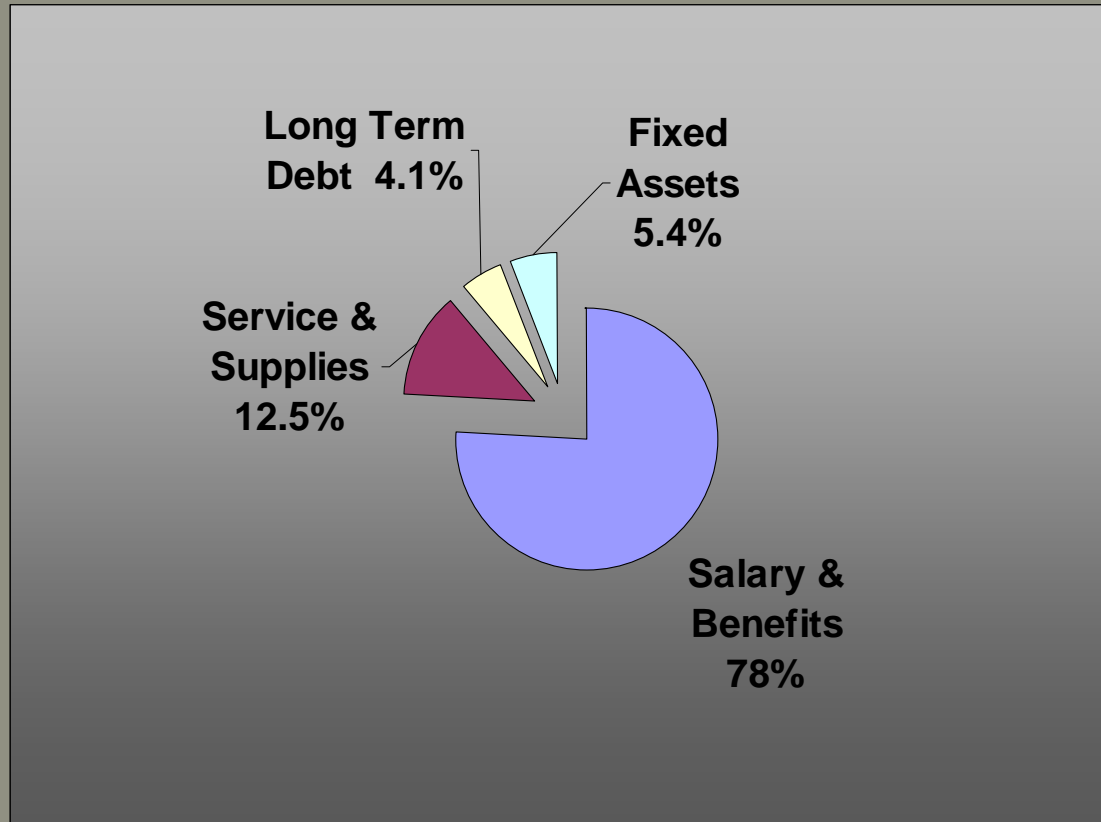
| | |
|----------------------------|---------------------|
| • Property Taxes-Secured | \$ 7,861,324.00 |
| • Property Taxes-Unsecured | \$ 182,282.00 |
| • Supplemental Prop. Taxes | \$ 115,000.00 |
| • Homeowners Tax Relief | \$ 80,638.00 |
| • Direct Assessment | \$ 510,000.00 |
| • Fund Balance | \$ 617,230.40 |
| • Prior Year Taxes | \$ 57,000.00 |
| • Benefit Assessment | \$ 259,000.00 |
| • Fees / Reimbursements | \$ 737,000.00 |
| • Development Fees | \$ 631,800.00 |
| Total | \$11,051,274.40 |

2008/2009 Operating Budget

- Salaries and Benefits \$ 8,627,657.17
- Services and Supplies \$ 1,380,502.91
- Long Term Debt \$ 454,000.00
- Fixed Assets \$ 589,114.32

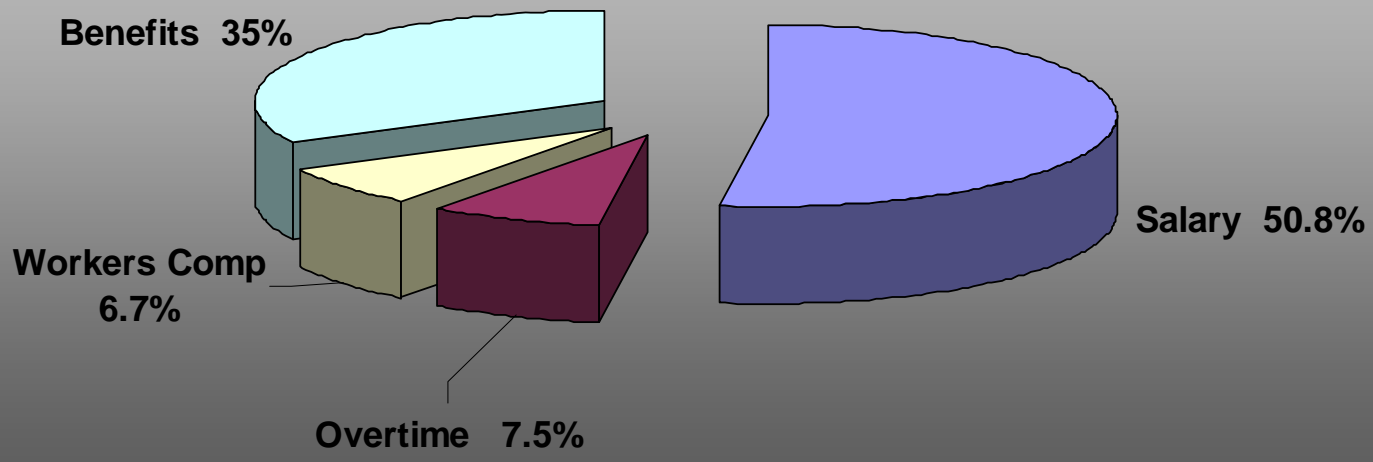
- Total \$11,051,274.40

2008/2009 Budget

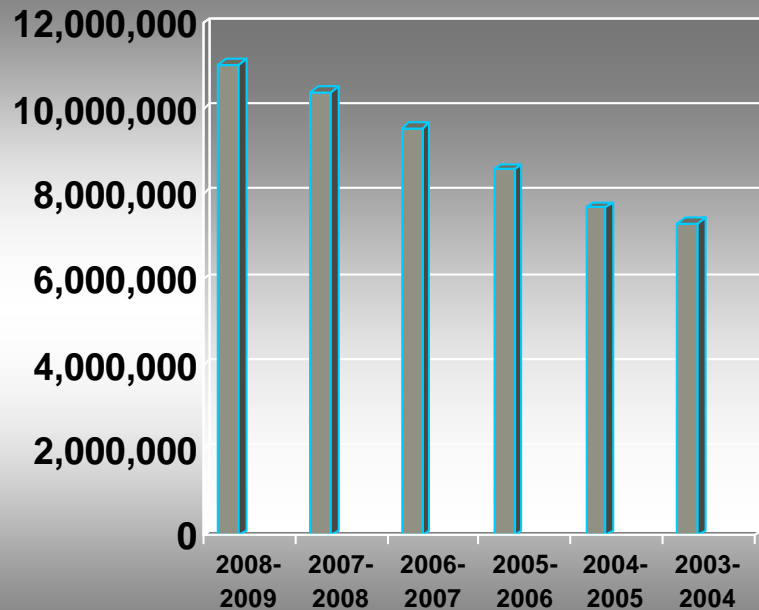


Salary & Benefits

Salary & Benefits

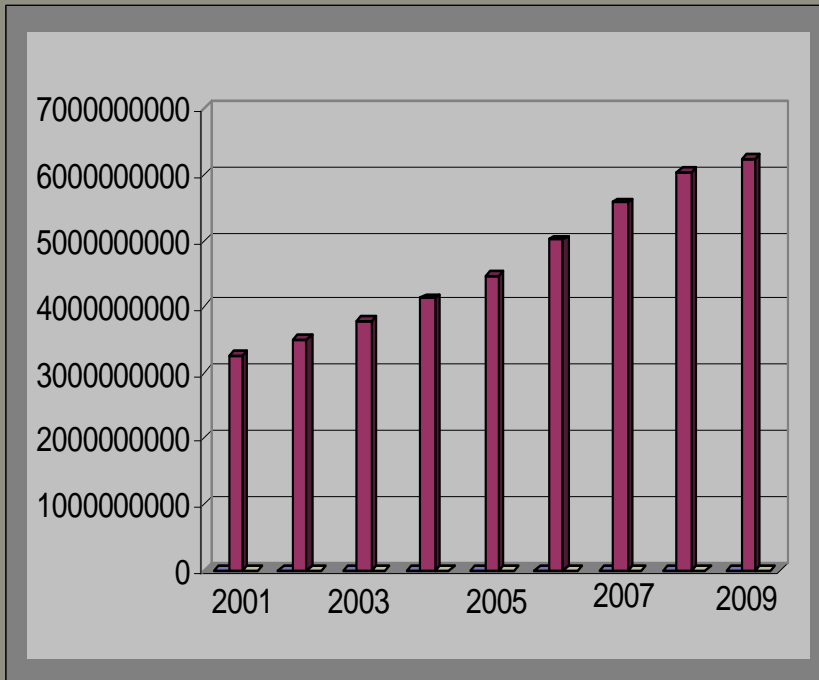


Operating Budget



- 2008-09 \$11,051,274 6.3%
- 2007-08 \$10,396,734 8.8%
- 2006-07 \$ 9,555,217 11.2%
- 2005-06 \$ 8,589,344 11.9%
- 2004-05 \$ 7,678,552 4.8%
- 2003-04 \$ 7,319,201 —

Assessed Value



| | | |
|------|---------------|--------|
| 2001 | 3,261,420,675 | 5.65% |
| 2002 | 3,504,432,923 | 7.45% |
| 2003 | 3,778,498,790 | 7.82% |
| 2004 | 4,125,134,011 | 9.17% |
| 2005 | 4,473,574,220 | 8.45% |
| 2006 | 5,008,460,320 | 11.96% |
| 2007 | 5,577,540,807 | 11.36% |
| 2008 | 6,032,352,650 | 8.15% |
| 2009 | 6,231,429,226 | 3.30% |

Training



Recruit Training

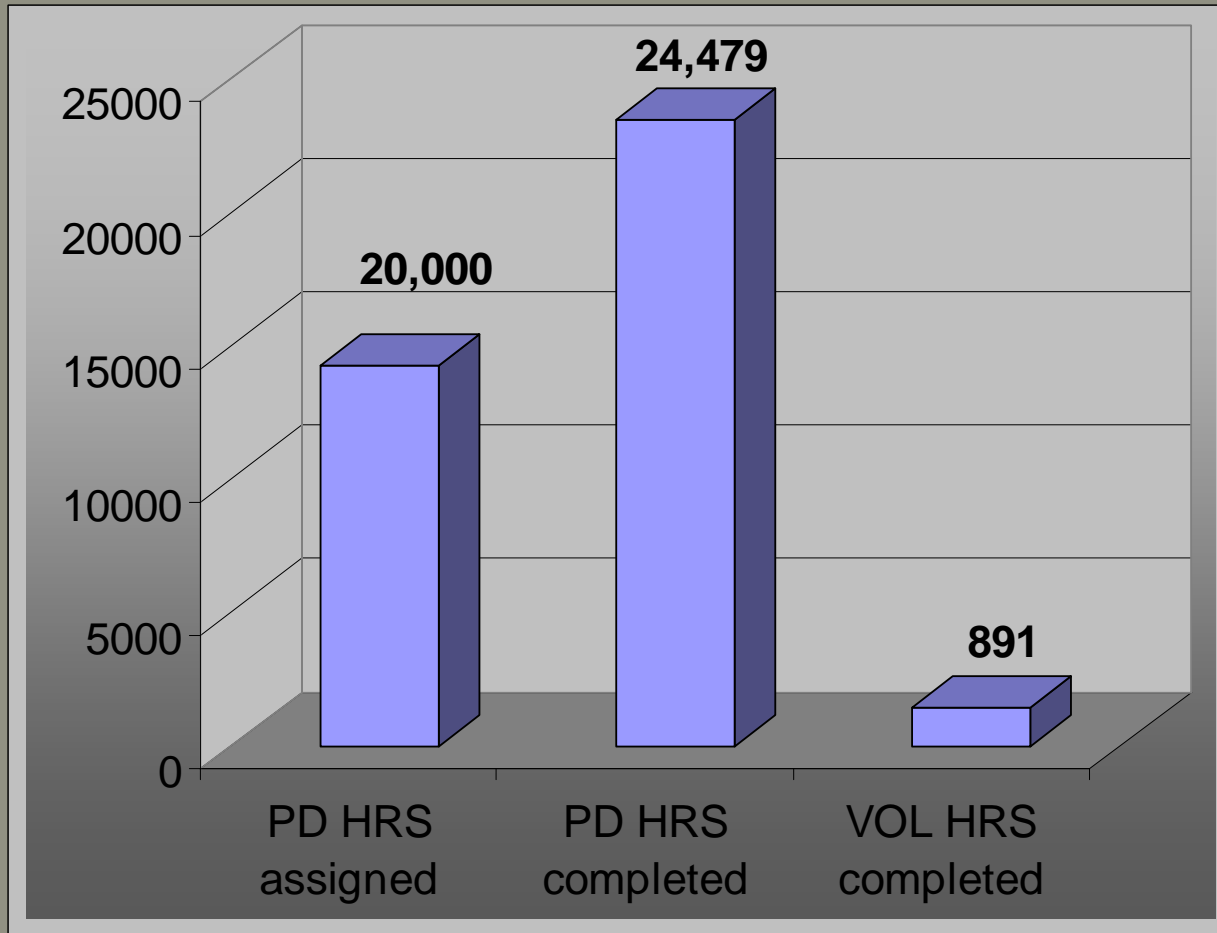
- Graduated 8 Firefighter's from the California Regional Fire Training Academy
- Graduated 4 Volunteer Firefighter's from the El Dorado County Fire Academy
- Hired 6 Apprentice Firefighter's



In-House Training Hours

- Career Training Assigned 20,000 hours
- Career Training Completed 24,479 hours
- Vol. Training Assigned 1,248 hours
- Vol Training Completed 891 hours

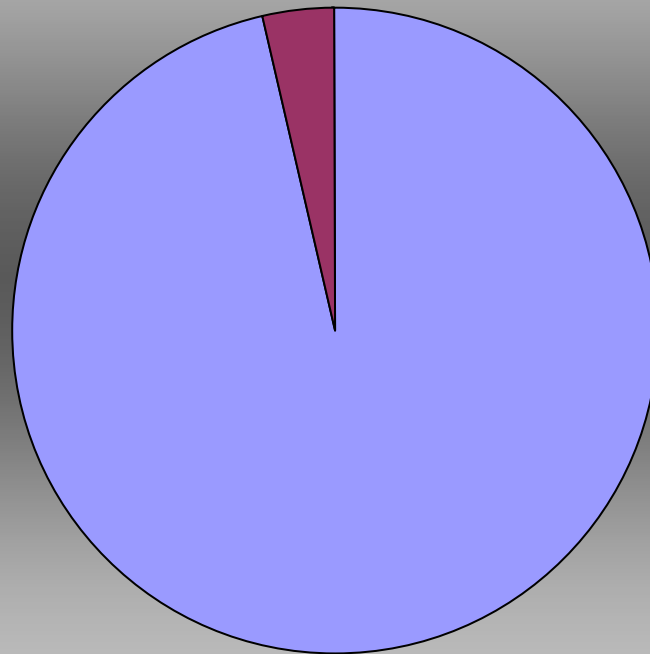
Total Training Hours



Total Training Hours

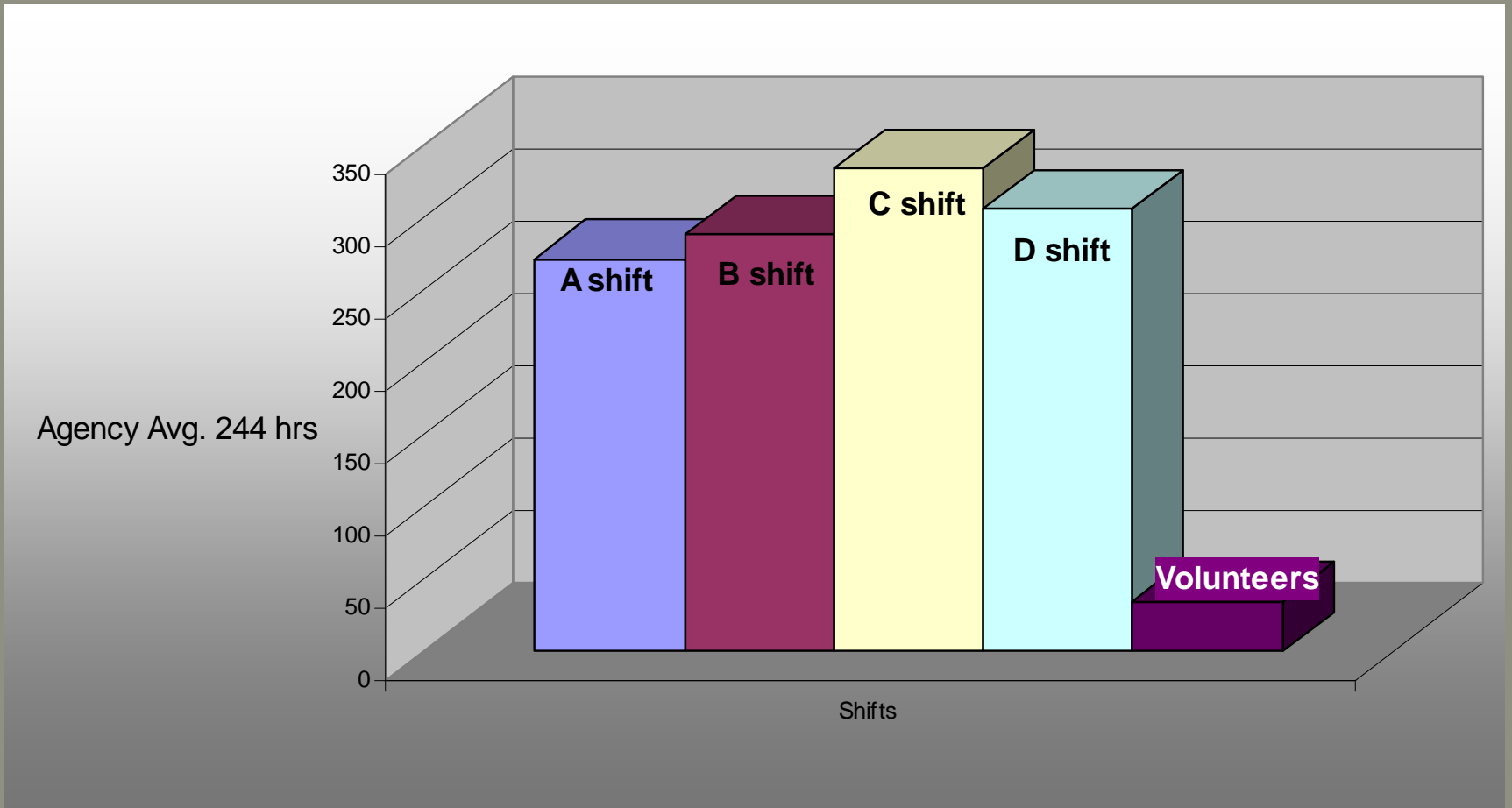
26,770 Total Training Hours

**Volunteer Staff
4%**



**Career Staff
96%**

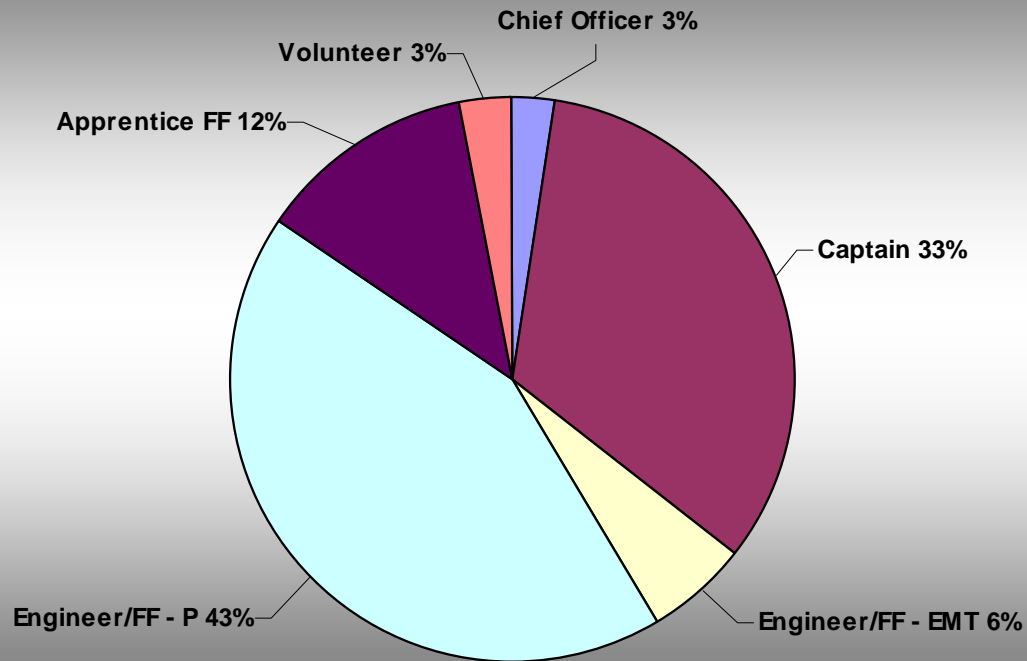
Training by Shift



Routine Training



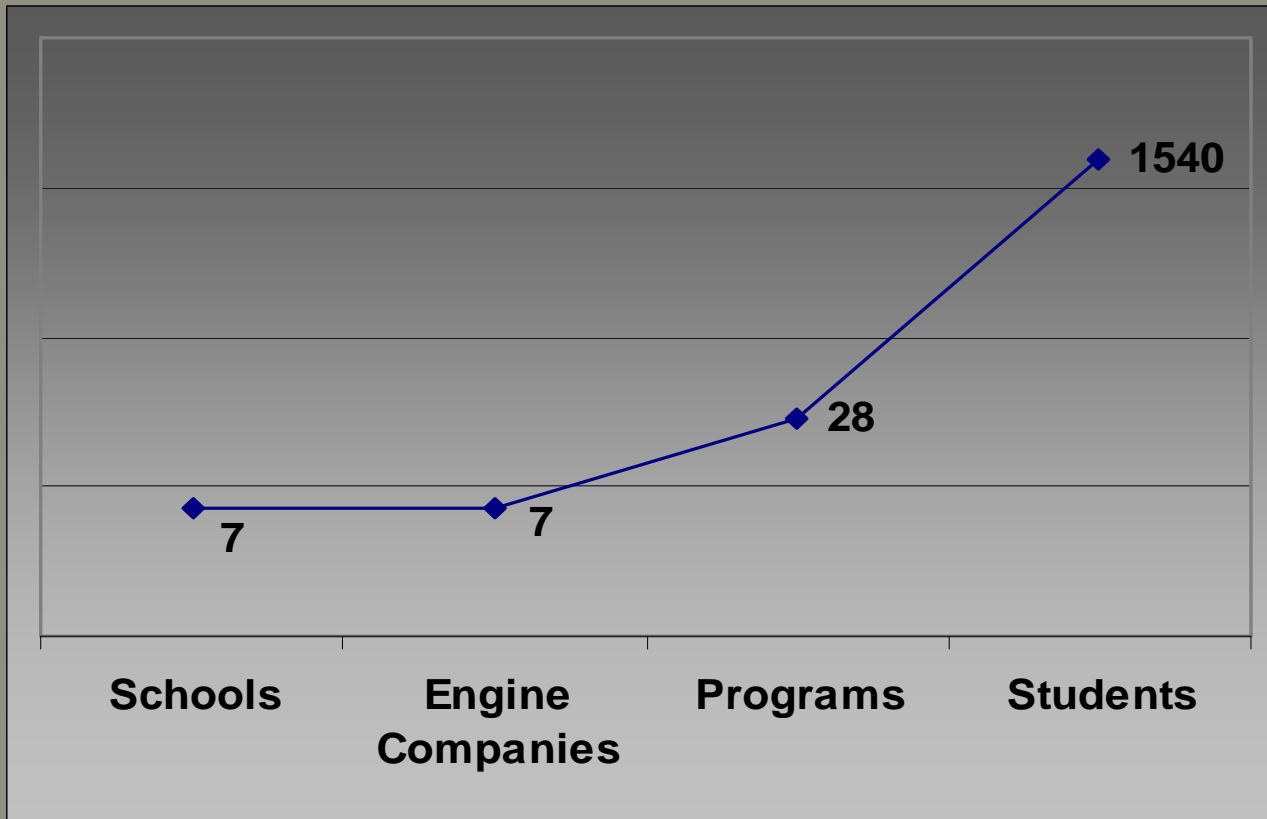
Training Comparison



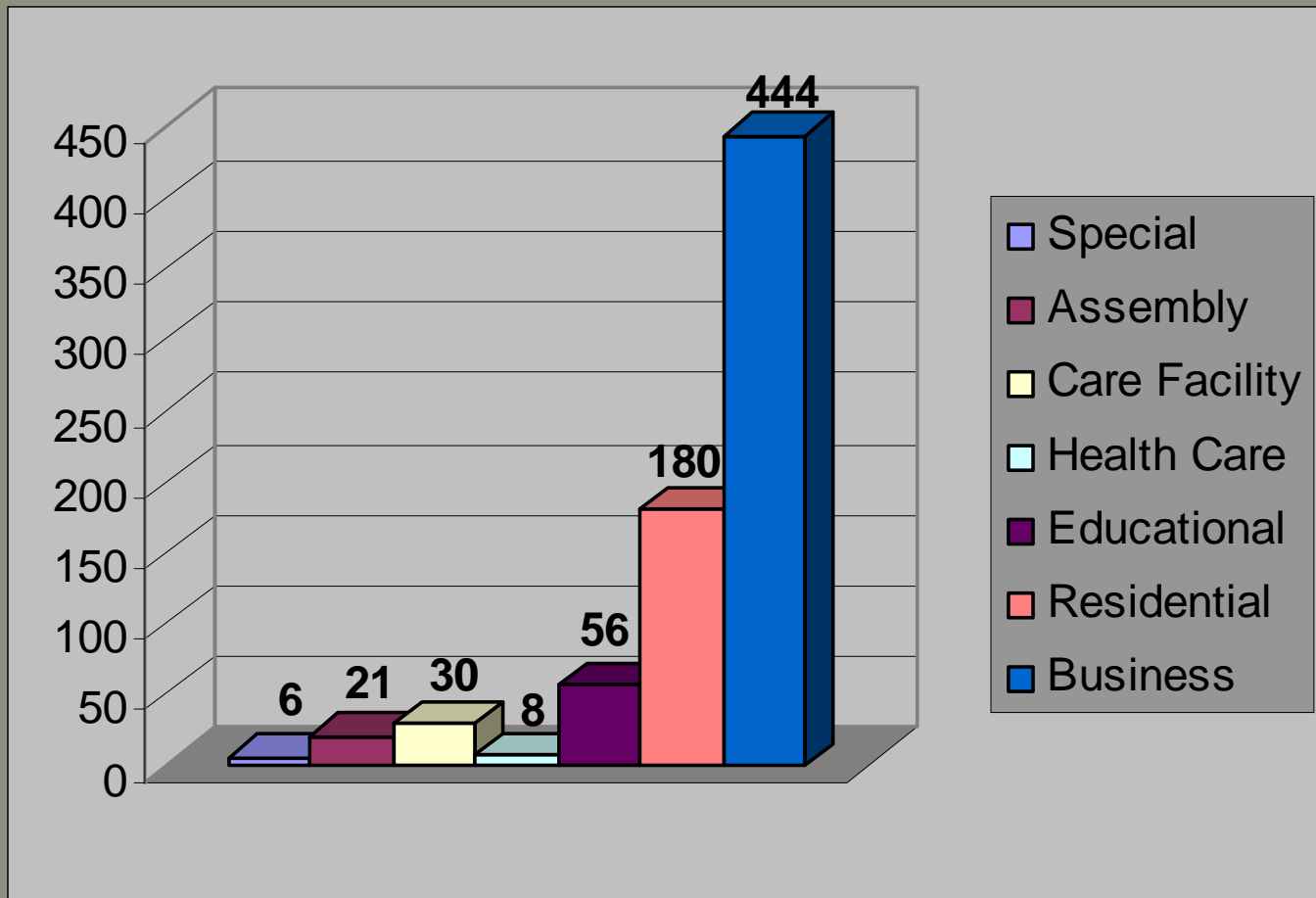
Public Education



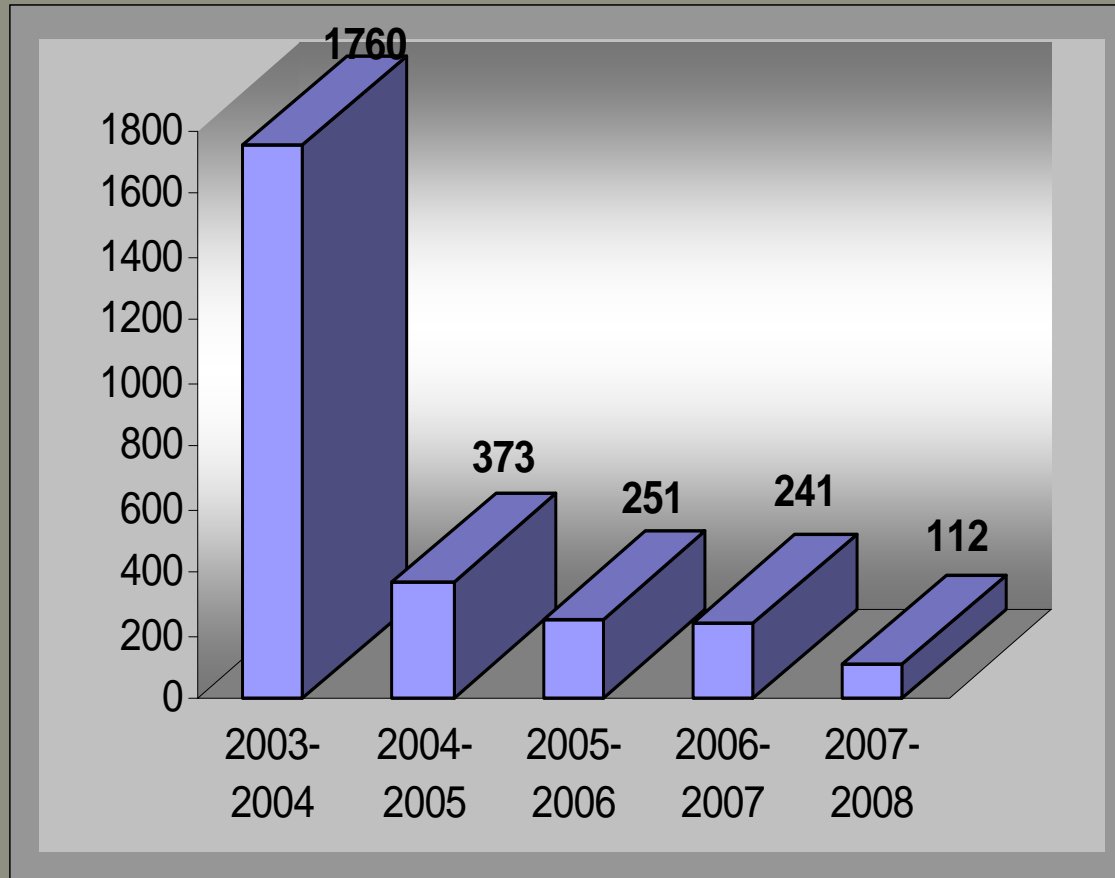
Pre-School Safety Programs



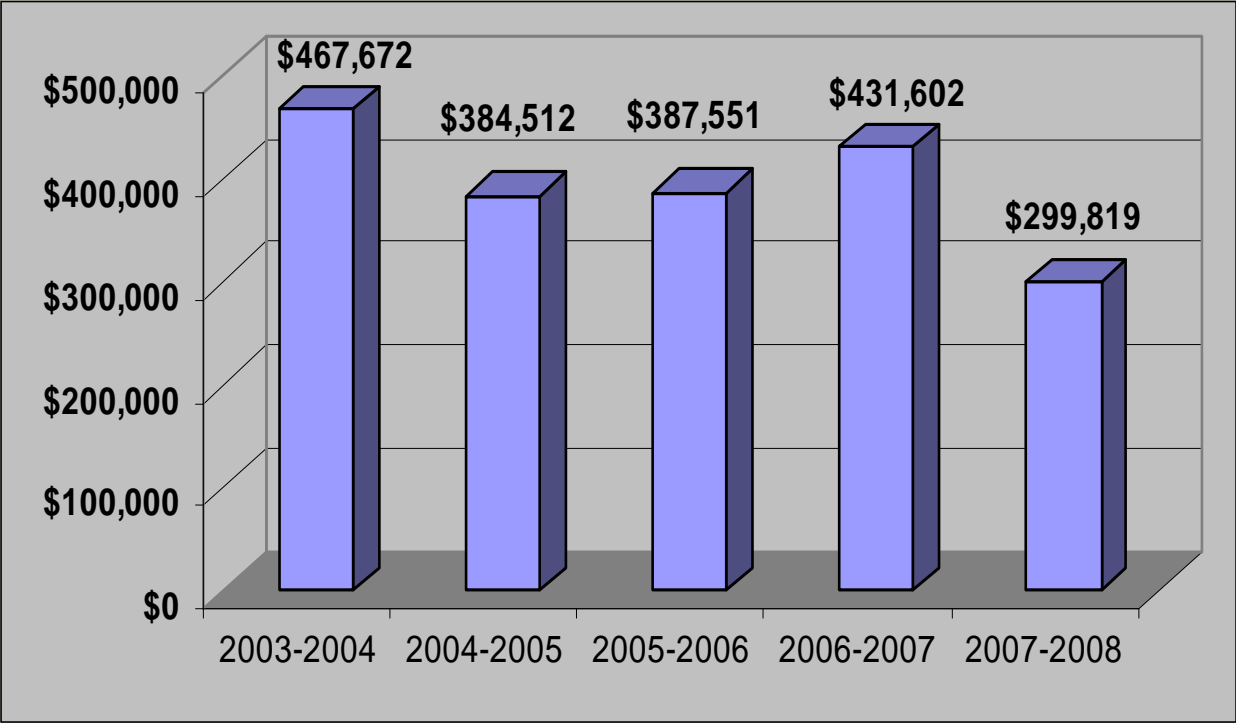
Company Inspections



Building Permits



Development Fees Collected



Providing a superior level of service with a well trained, highly efficient staff who places the needs of our communities first.



Respectfully submitted by Bruce M. Lacher, Fire Chief