

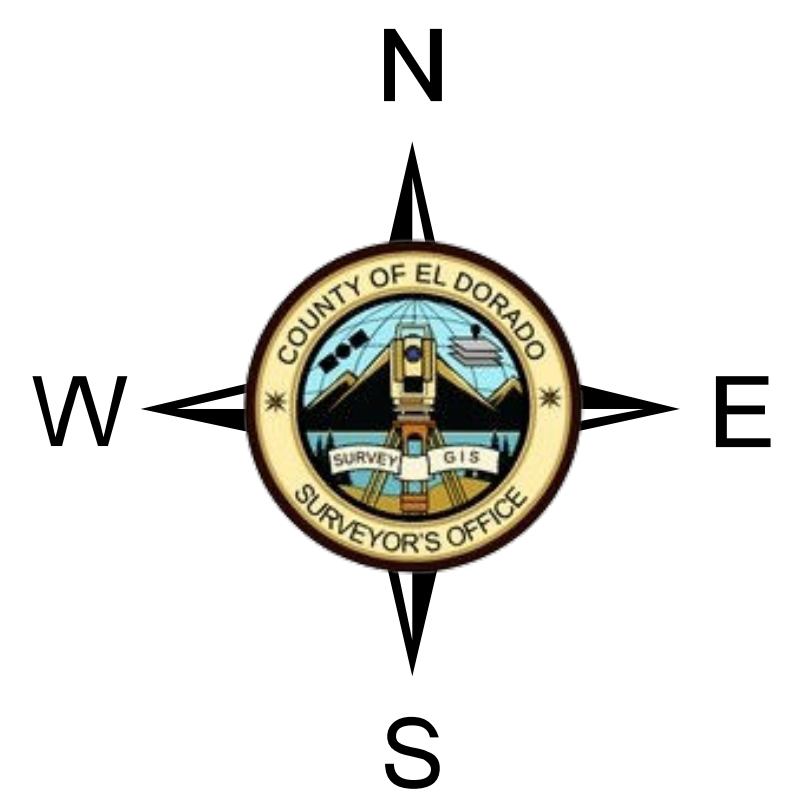
District 1	District 2	District 3	District 4	District 5	District 6	District 7	Std. Dev.	Pct. Dev.
10379	10683	10505	10434	10292	10706	10684	166.97	1.59

NOTE: All population counts are approximate. Current boundaries are based on census block boundaries. Final district boundaries will be adjusted to follow parcels, roads, rivers, section lines, etc. This will result in minor adjustments in the final population counts and percent deviations.

DISCLAIMER:
THIS DEPICTION WAS COMPILED FROM UNVERIFIED PUBLIC AND PRIVATE SOURCES AND IS ILLUSTRATIVE ONLY. NO REPRESENTATION IS MADE AS TO THE ACCURACY OF THIS INFORMATION. PARCEL BOUNDARIES ARE PARTICULARLY UNRELIABLE. USERS MAKE USE OF THIS DEPICTION AT THEIR OWN RISK.

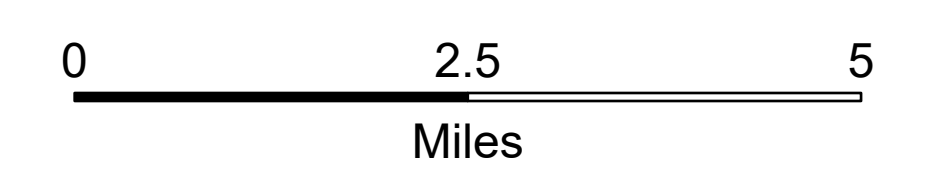
NOTES:
LAYER INFORMATION MAY COVER ADDITIONAL AREAS OUTSIDE OF THE DISPLAYED AREA.
PREPARED AT THE REQUEST OF: EDCFPD DATE: 5/20/2025
MAP PREPARED BY: EDC GIS DATE: 10/24/2025
G.I.S. PROJECT ID: see0075473_Alt1_v2, RELATED REPORT: N/A
EL DORADO COUNTY SURVEYOR/G.I.S. DIVISION
EMAIL: gis@edcgov.us PHONE: (530) 621-5440

MAP DISPLAYED IN STATE PLANE COORDINATE SYSTEM
(NAD 1983 CALIFORNIA ZONE 2, FEET)



EDC & DS FPD Redistricting Alternative 1 - Revised

County of El Dorado
State of California



Legend

- District 1
- District 2
- District 3
- District 4
- District 5
- District 6
- District 7
- EDC & DS FPD Boundary
- City of Placerville
- County Boundary
- Lakes
- Rivers
- Roads
- Highway
- Major
- Minor