



# El Dorado County Fire Protection District

November 2024

## Run Statistics – Engines & Medics



### Engine Companies:

Engine 17: 78

Engine 19: 57

Engine 25: 265

Engine 28: 120

Engine 72: 45

**Total Responses: 565**

### Medic Units:

Medic 17: 220

Medic 19: 204

Medic 25: 248

Medic 28: 250

Medic 49: 293

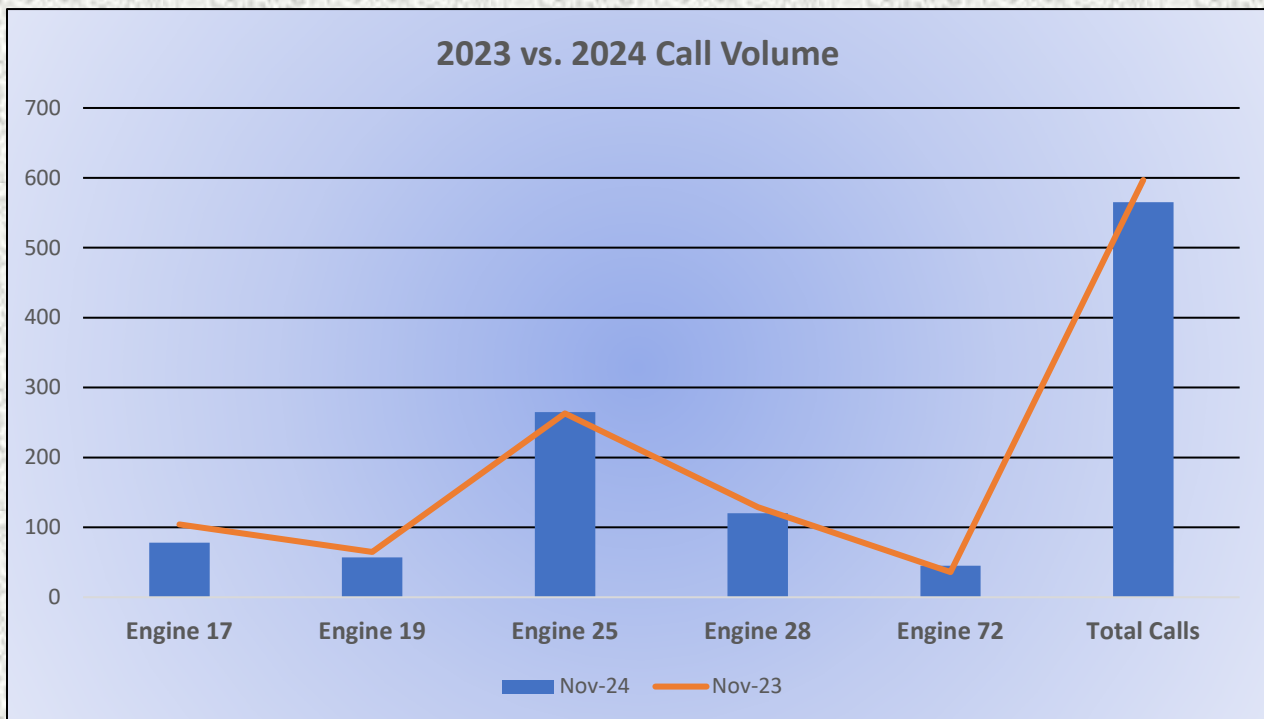
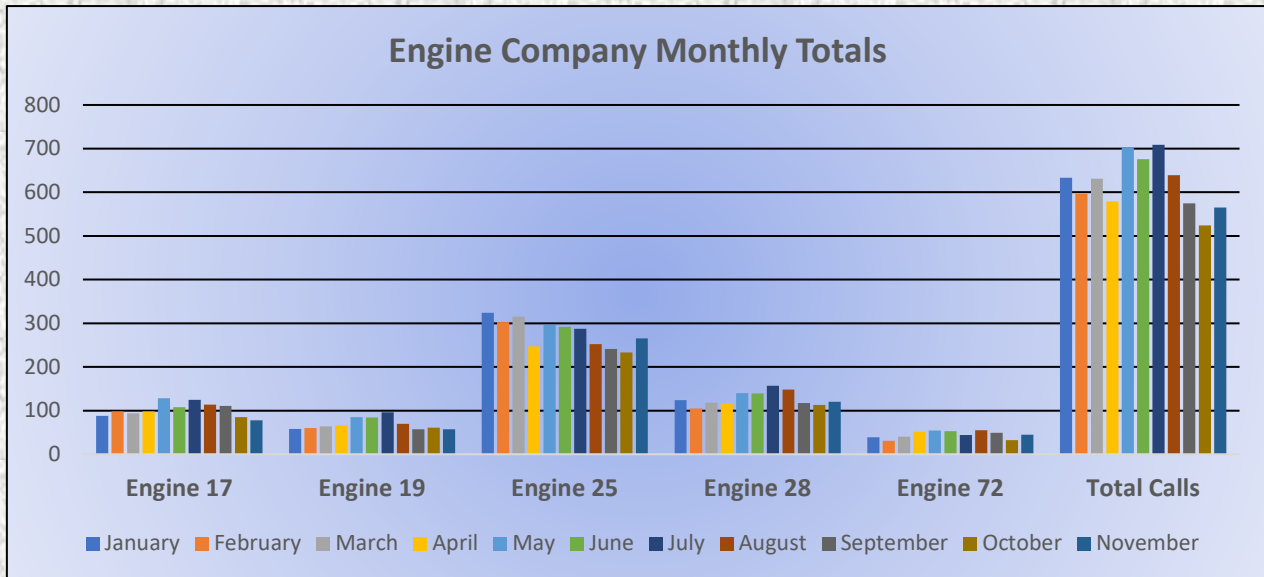
**Total Responses: 1,215**





# El Dorado County Fire Protection District

Monthly Run Statistics and Yearly Comparison  
November 2024  
Engine Companies and Medic Units

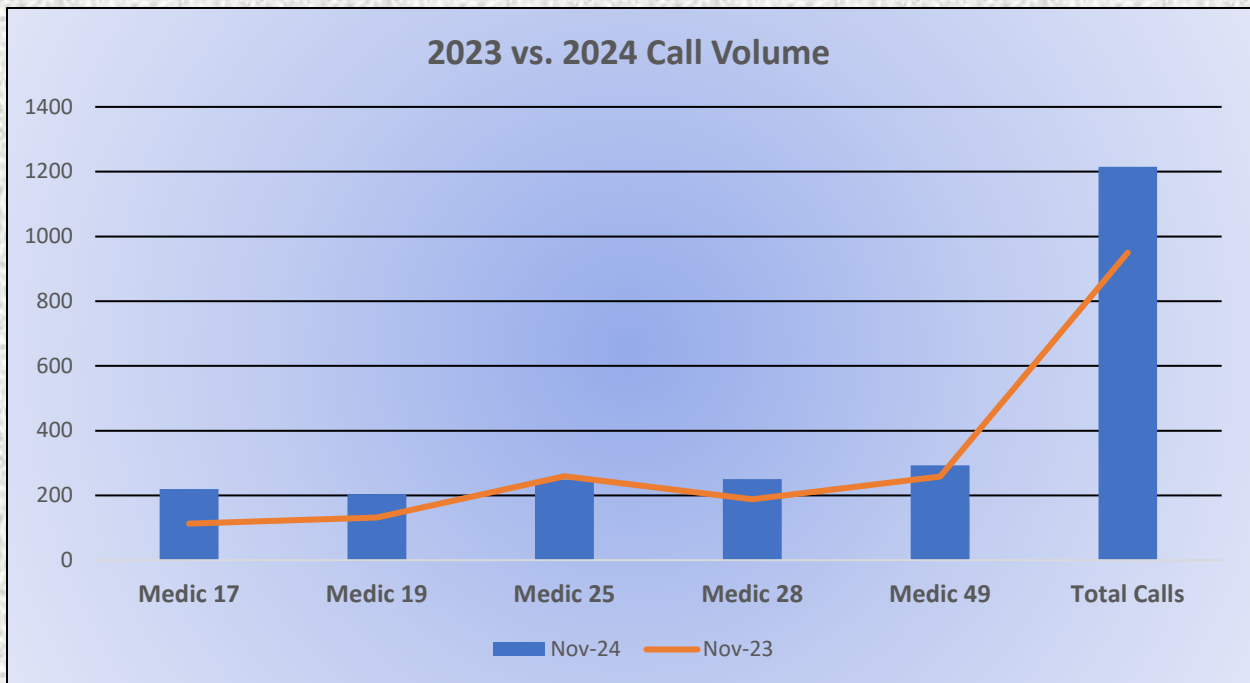
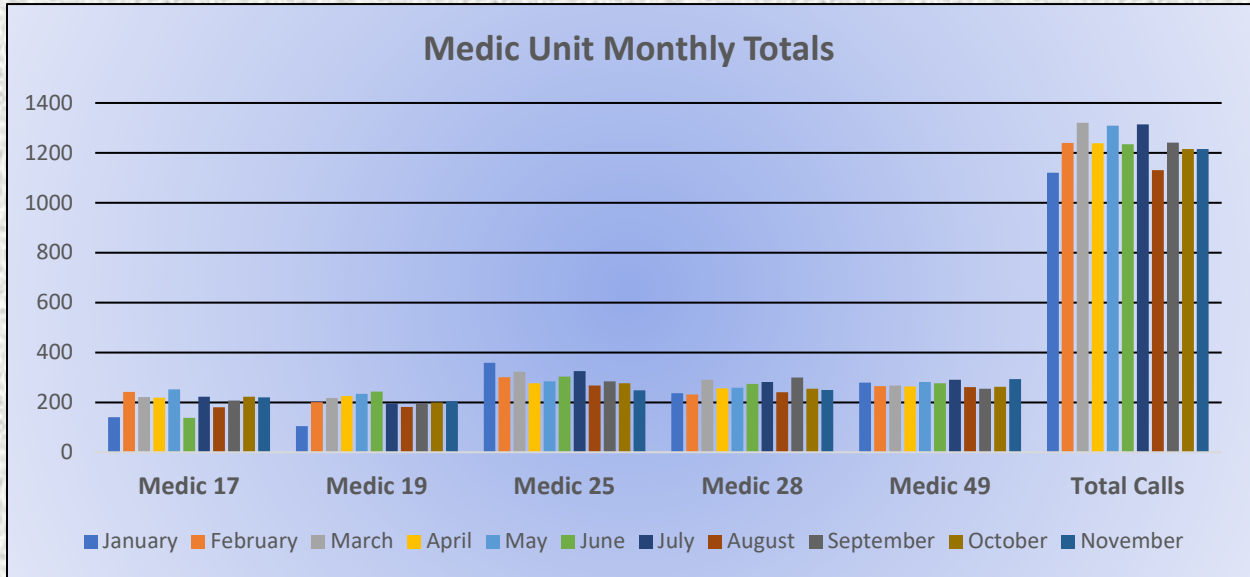






# El Dorado County Fire Protection District

## Monthly Run Statistics and Yearly Comparison November 2024 Engine Companies and Medic Units





# El Dorado County Fire Protection District

## Monthly Run Statistics and Yearly Comparison November 2024



**November 1 - November 30, 2024**  
YTD January 1 - November 30  
Lifetime Since June 2021

**CA - El Dorado County Fire Protection District**  
Safety Cloud® Report

### Alert Totals

**Drivers Alerted**  
**568**  
YTD 4,290  
Lifetime 43,517

**R2R Alerts sent**  
**0**  
YTD 0  
Lifetime 0

**R2R Alerts Received**  
**0**  
YTD 0  
Lifetime 0

### Incident Totals

**Total Incidents**  
**40**  
YTD 293  
Lifetime 1,004

**Average Time On-Scene**  
**15.2 min**  
YTD 19.6 min  
Lifetime 87.9 min

### Run Totals

**Total Runs**  
**71**  
YTD 702  
Lifetime 2,968

**Total Responding Time**  
**322 min**  
YTD 3,113 min  
Lifetime 12,380 min

**Average Time-to-Scene**  
**4.5 min**  
YTD 4.4 min  
Lifetime 4.2 min

**Drivers Alerted**  
Total drivers alerted; based on HAAS Alert enabled applications.

**Average Time On-Scene**  
Average time duration per incident.

**R2R Alerts Sent**  
Total number of Responder-to-Responder Alerts sent to nearby emergency vehicles.

**Total Runs**  
Total times a vehicle was dispatched to an incident with lights engaged for at least 1+ minute.

**R2R Alerts Received**  
Total number of Responder-to-Responder Alerts received by your emergency vehicles.

**Total Responding Time**  
Total time vehicles/apparatus spent traveling to dispatched calls with lights engaged.

**Total Incidents**  
Total number of times at least one vehicle arrived on-scene with lights engaged for 2+ minutes.

**Average Time-to-Scene**  
Average time it took for dispatched vehicle to arrive on-scene.





# El Dorado County Fire Protection District



## Station 25 Run Statistics November 2024

**ENGINE 25:** 265 Total Calls  
Medical Aid- 182  
Fire- 10  
Traffic Collision- 19  
Public Assist - 21  
Misc. – 20  
Move/Cover– 5

**MEDIC 25:** 248 Total Calls  
Medical Aid- 220  
Fire- 5  
Traffic Collision- 20  
Transfer -9  
Misc.- 3  
Move/Cover - 22





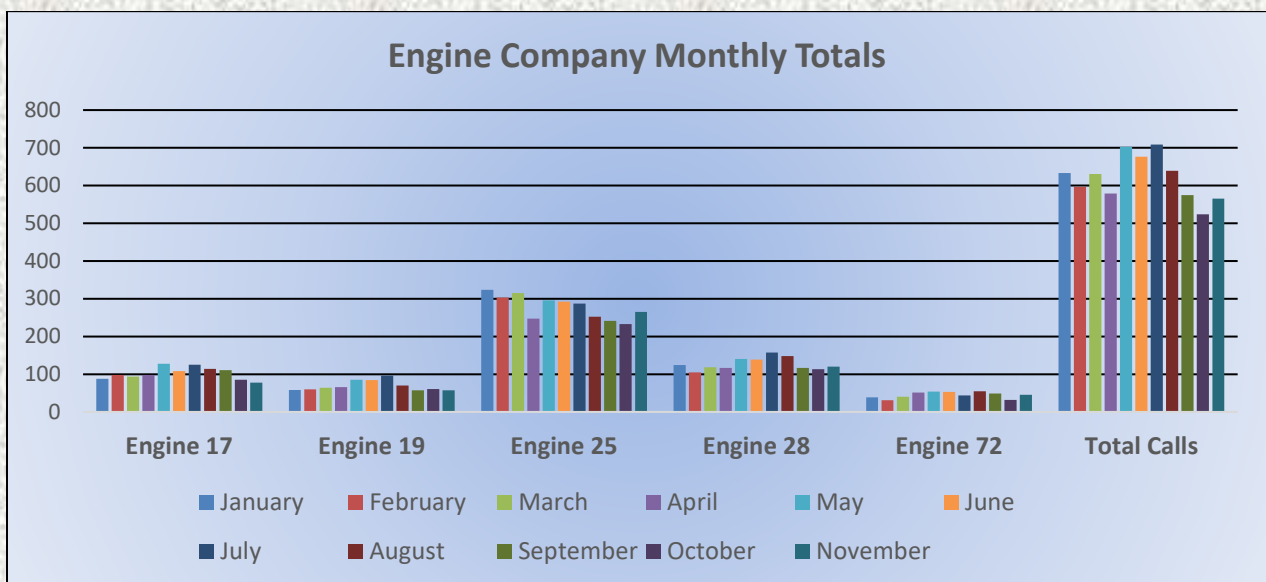
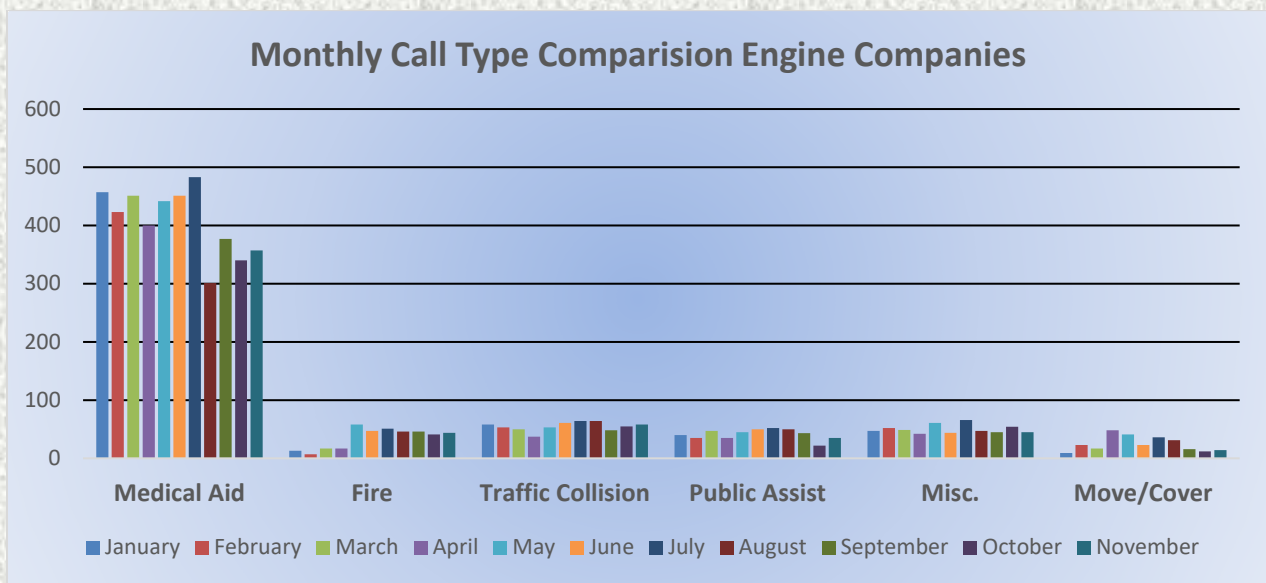


# El Dorado County Fire Protection District



## Monthly Run Statistics and Call Break Down November 2024 Engine Companies and Medic Units

Total Responses for Engine Companies: 565

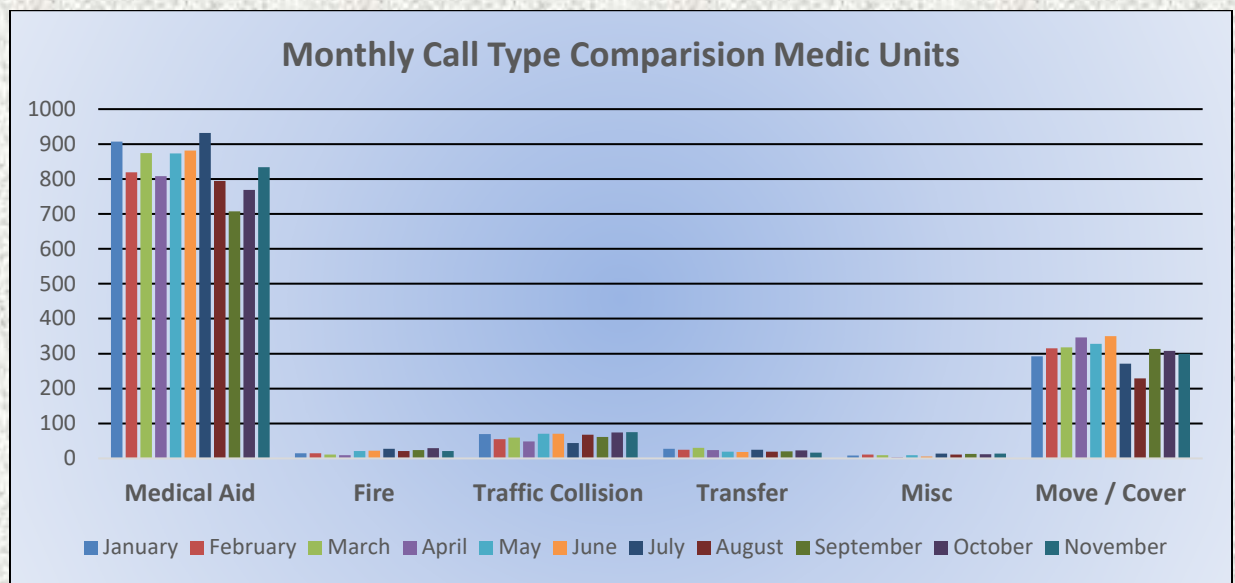
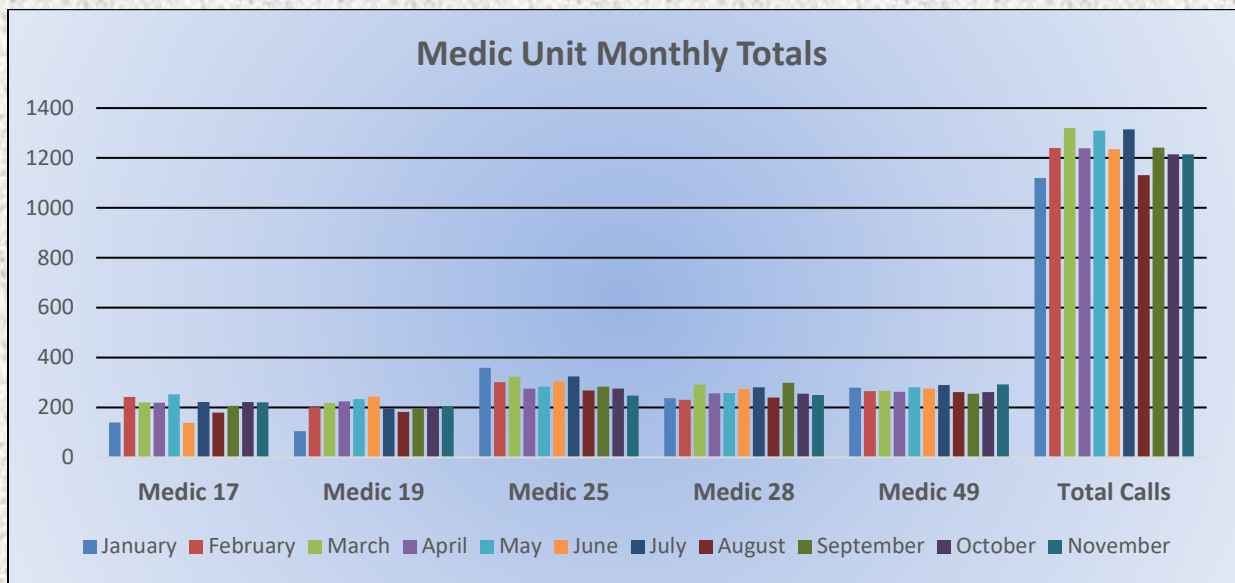




# El Dorado County Fire Protection District



Total Responses for Medic Units: 1,215

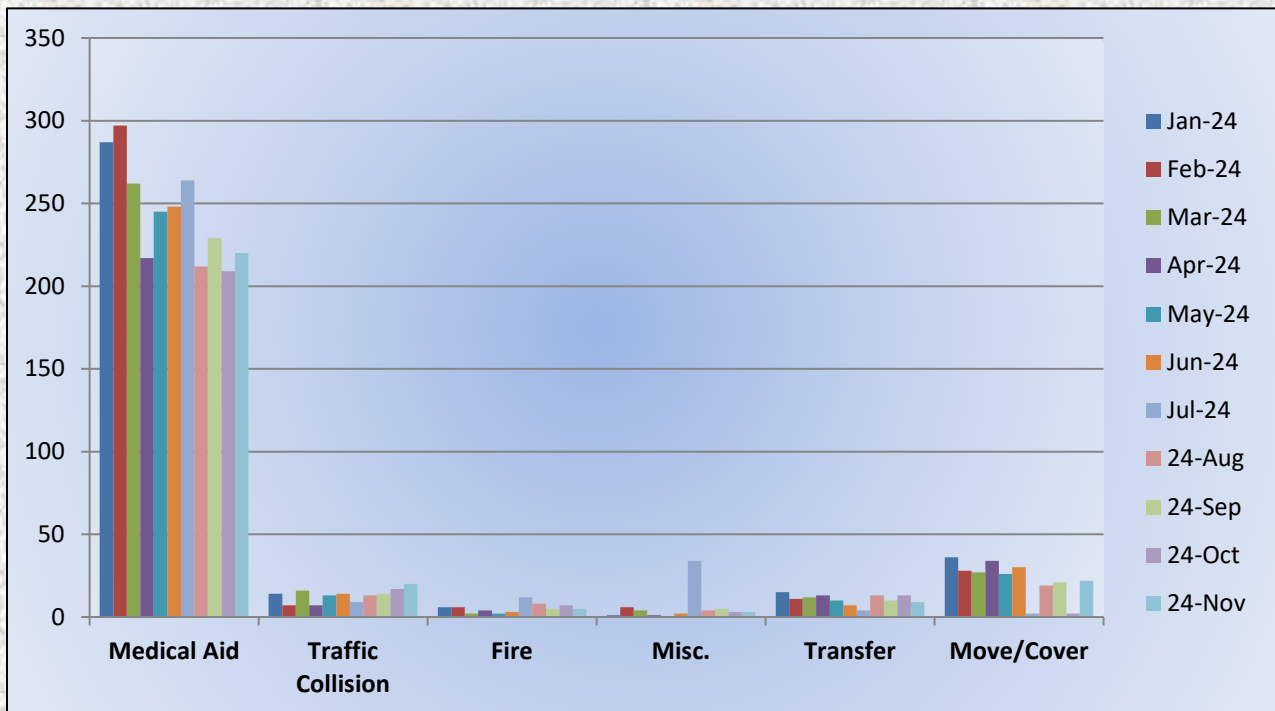
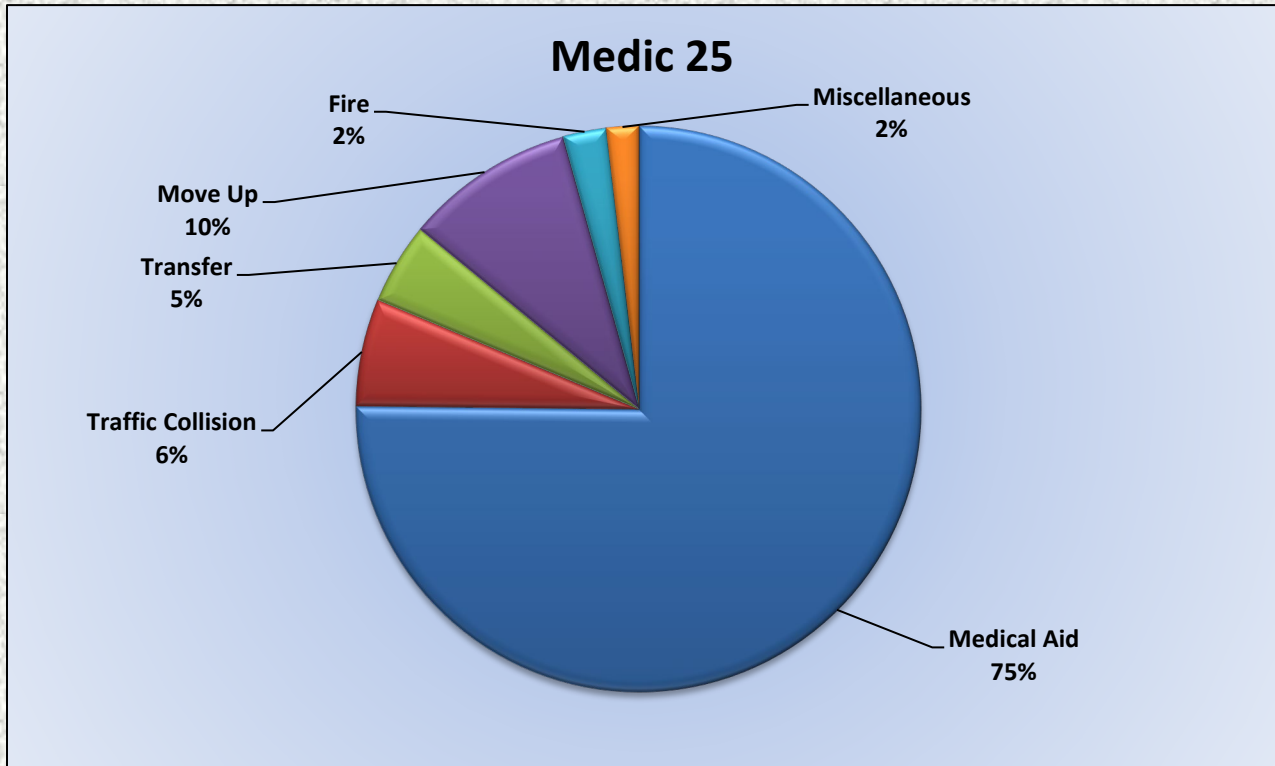








## Medic 25 Monthly Statistics Comparison





## El Dorado County Fire Protection District

---

### Station 17 Run Review November 2024

#### **ENGINE 17: 78 Total Calls**

Medical Aid- 55

Fire- 7

Traffic Collision- 10

Public Assist- 3

Misc- 3

Move/Cover - 0

#### **MEDIC 17: 220 Total Calls**

Medical Aid- 105

Fire- 3

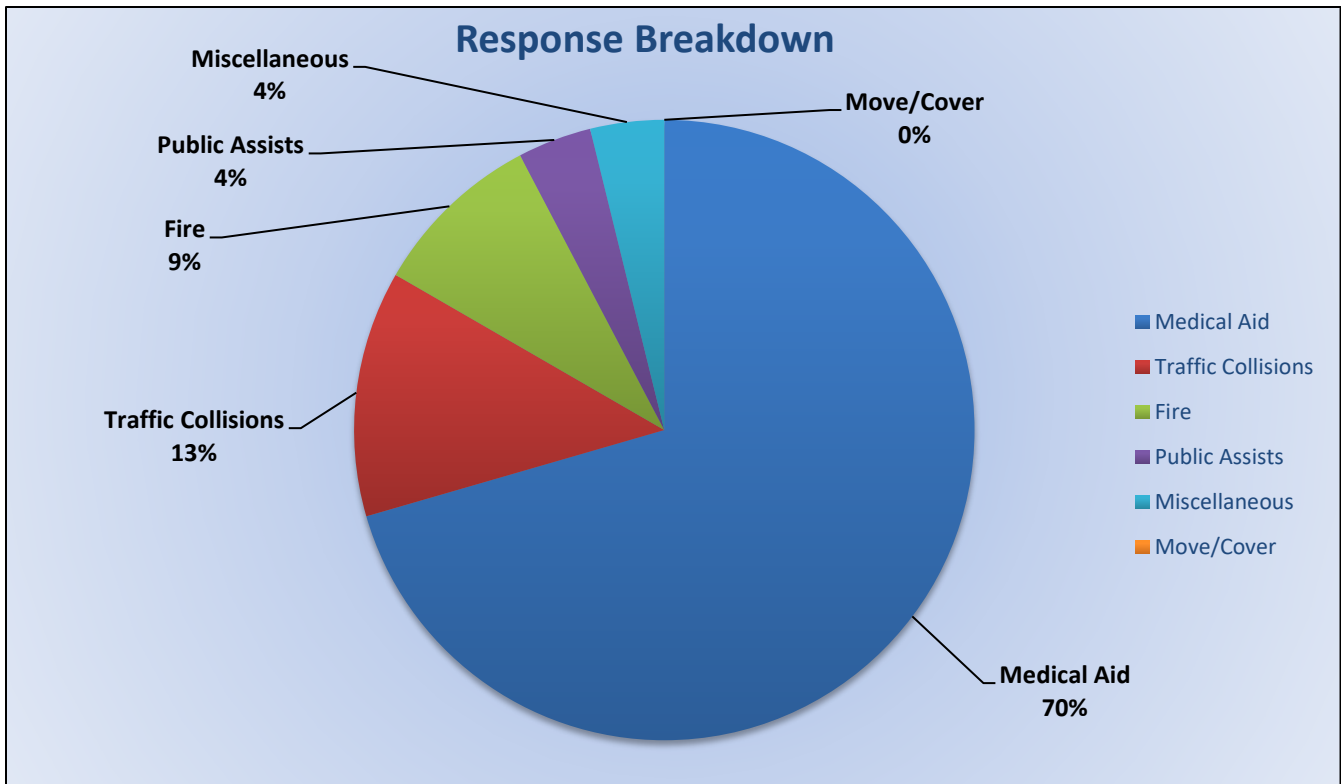
Traffic Collision- 9

Transfer- 1

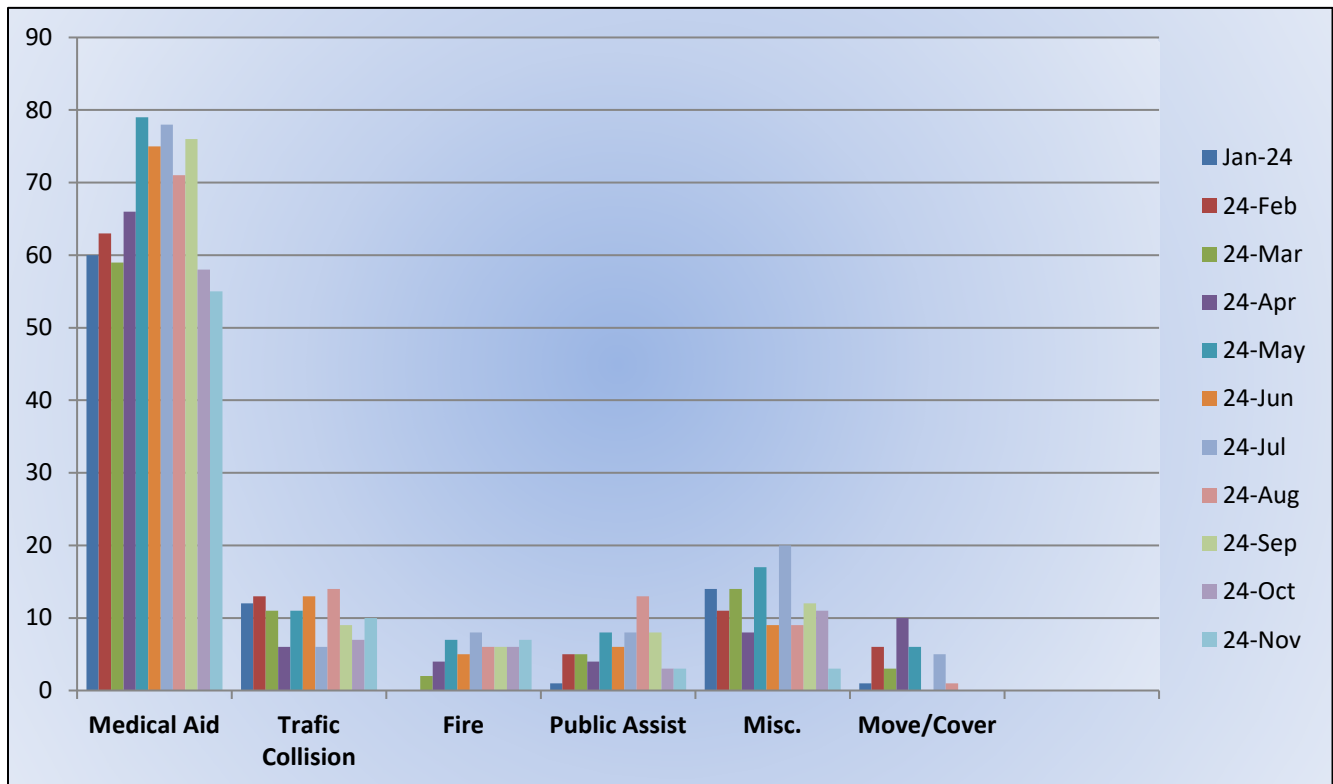
Misc- 4

Move/Cover - 98

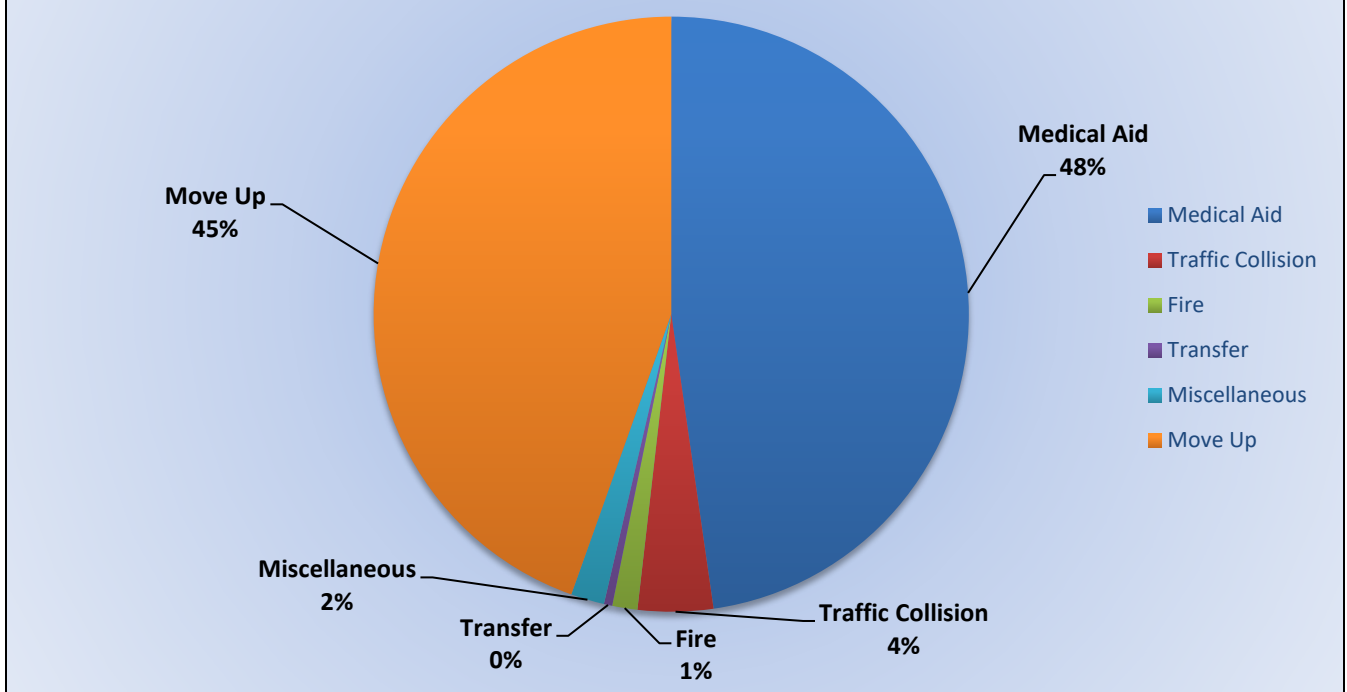




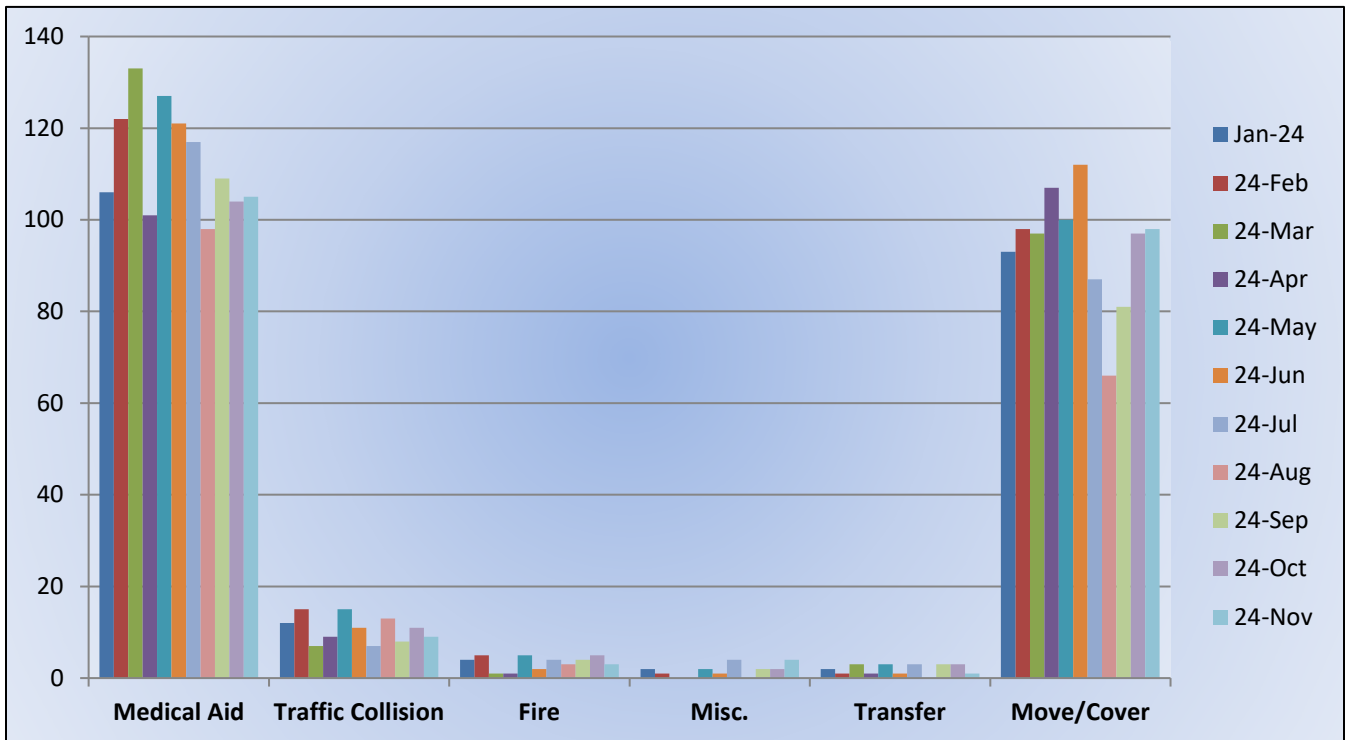
### E17 Monthly Statistics Comparison



## Response Breakdown



## M17 Monthly Statistics Comparison







## El Dorado County Fire Protection District

---

### Station 19 Run Review November 2024

#### **ENGINE 19:** 57 Total Calls

Medical Aid- 26

Fire- 16

Traffic Collision- 6

Public Assist- 3

Misc- 5

Move/Cover - 1

#### **MEDIC 19:** 204 Total Calls

Medical Aid- 88

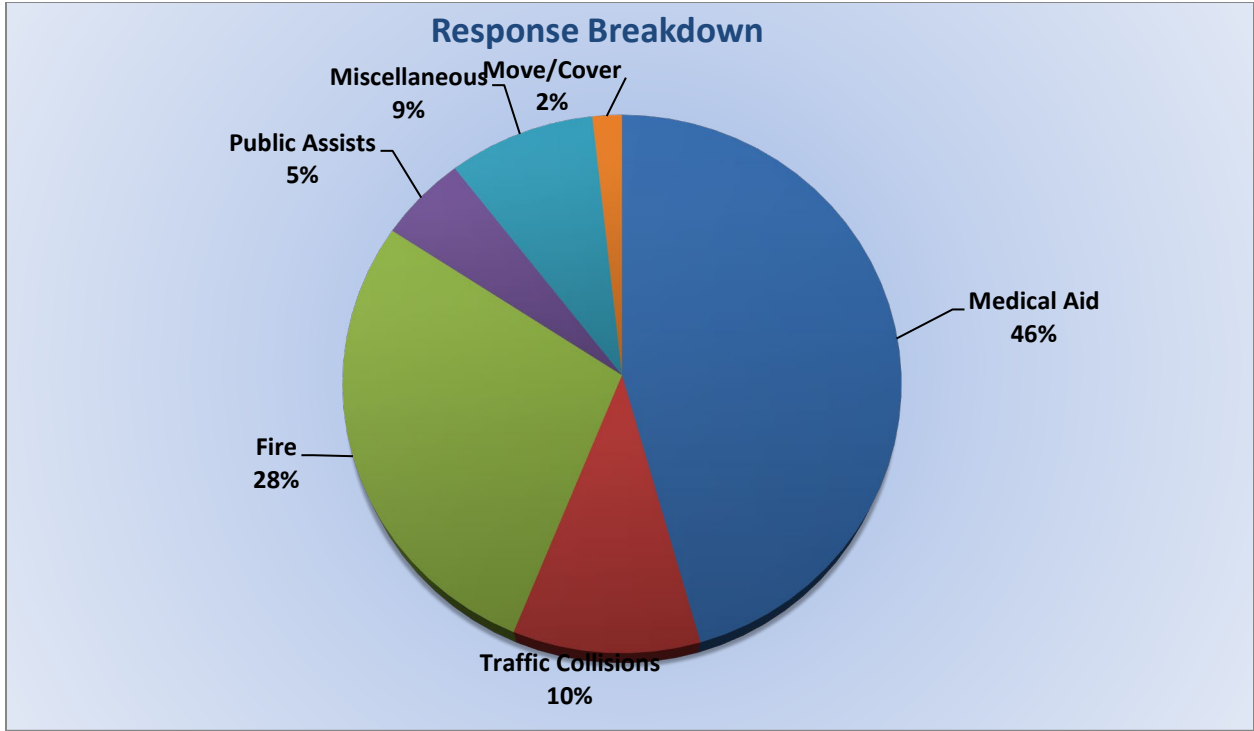
Fire- 4

Traffic Collision- 12

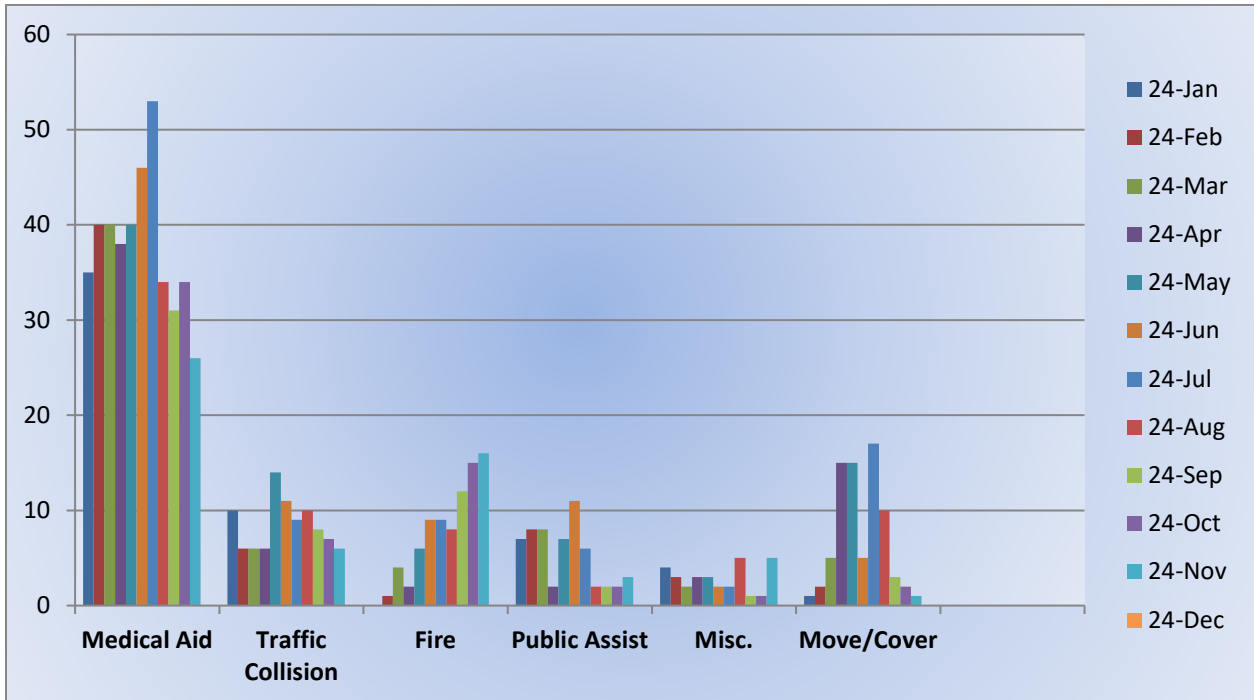
Transfer- 0

Misc- 0

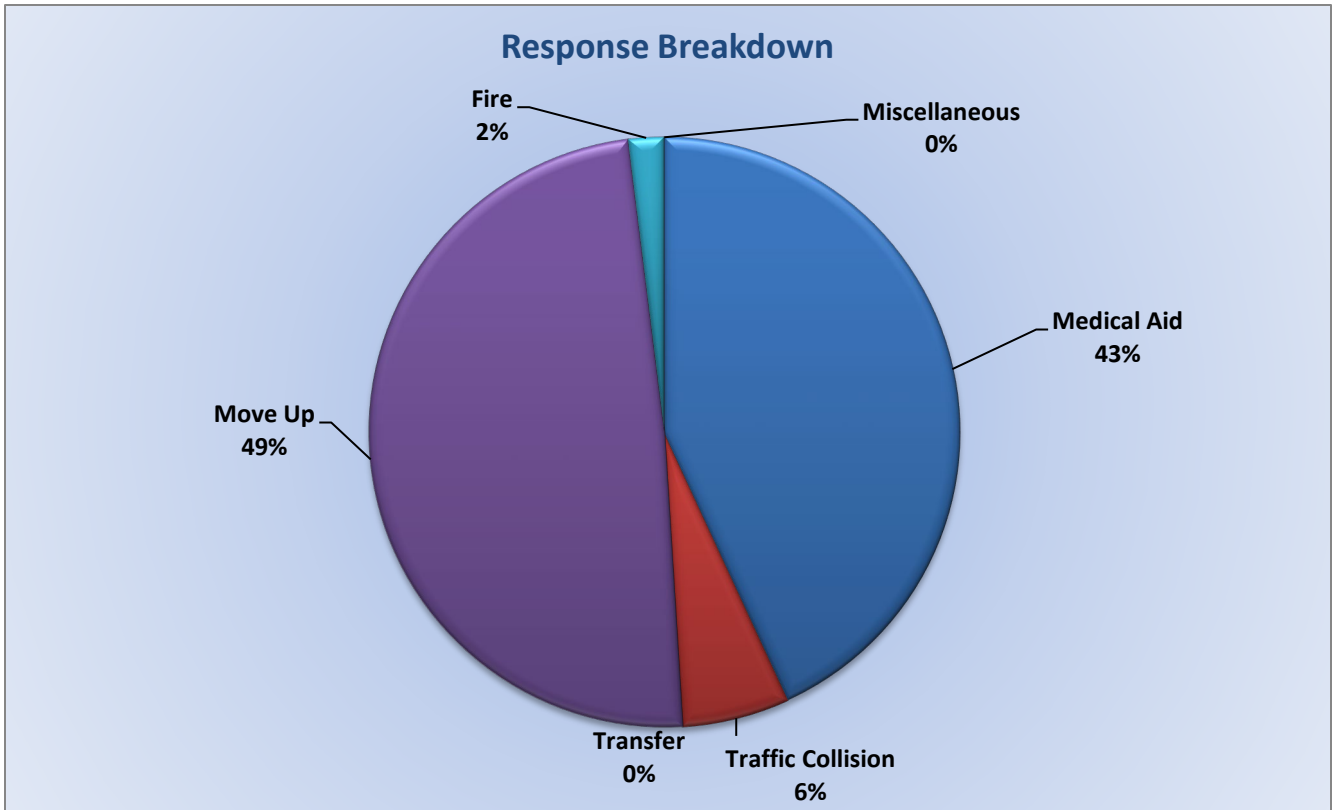
Move/Cover - 100



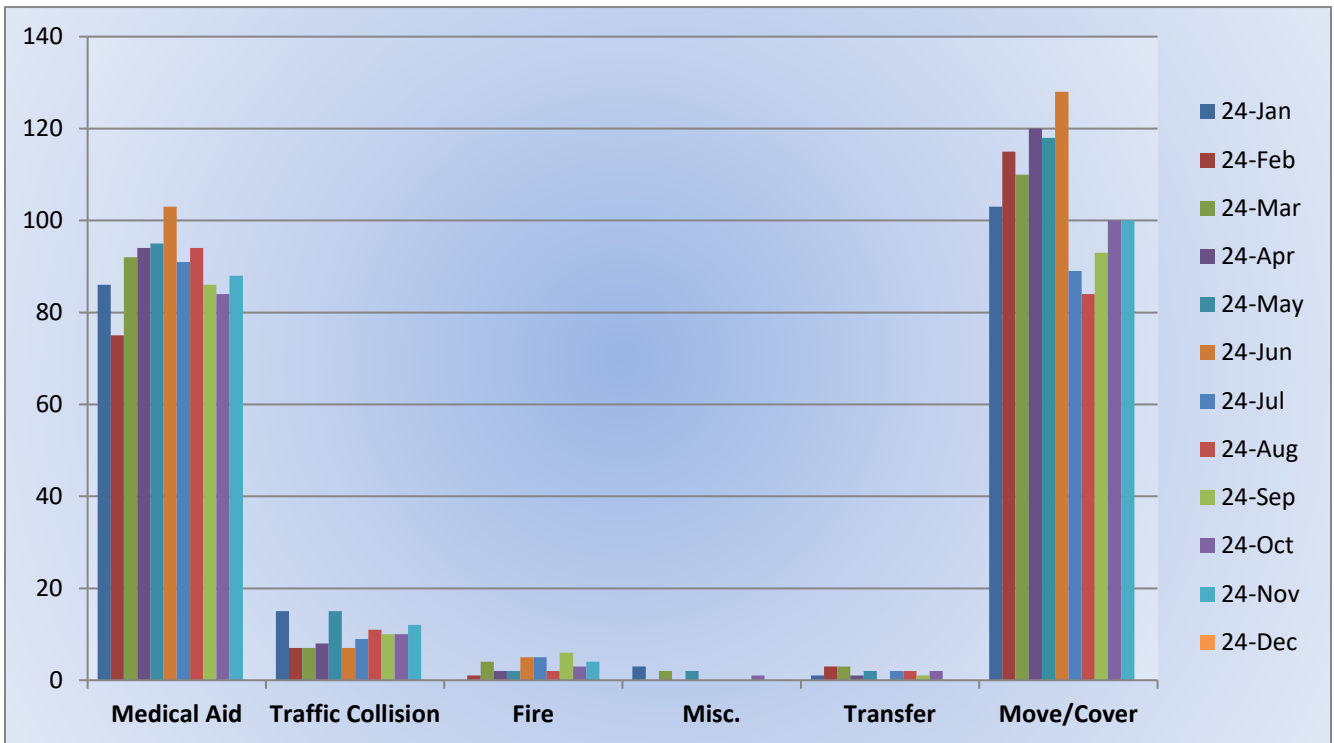
### E19 Monthly Statistics Comparison







### M19 Monthly Statistics Comparison





## El Dorado County Fire Protection District

---

### Station 25 Run Review October 2024

#### **ENGINE 25:** 265 Total Calls

Medical Aid- 182

Fire- 10

Traffic Collision- 19

Public Assist- 21

Misc- 20

Move/Cover -5

#### **MEDIC 25:** 248 Total Calls

Medical Aid- 220

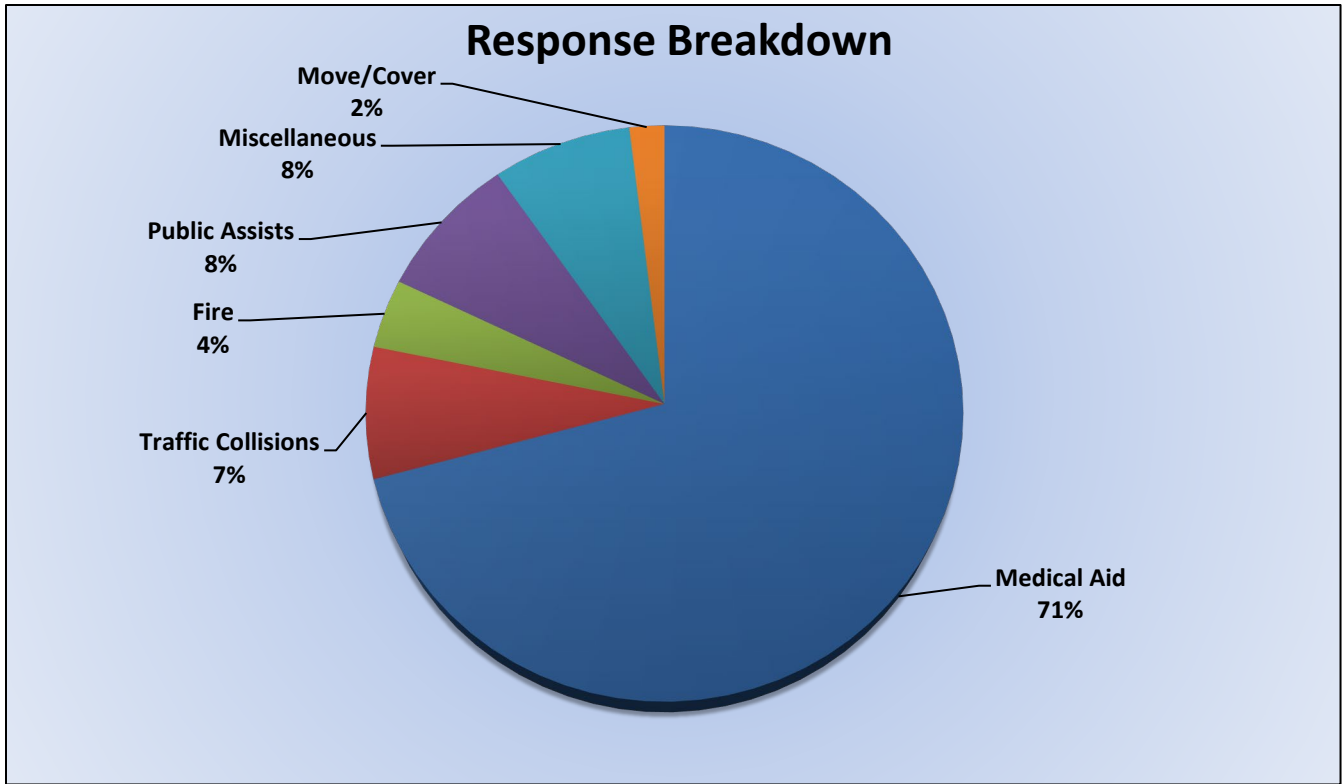
Fire- 5

Traffic Collision- 20

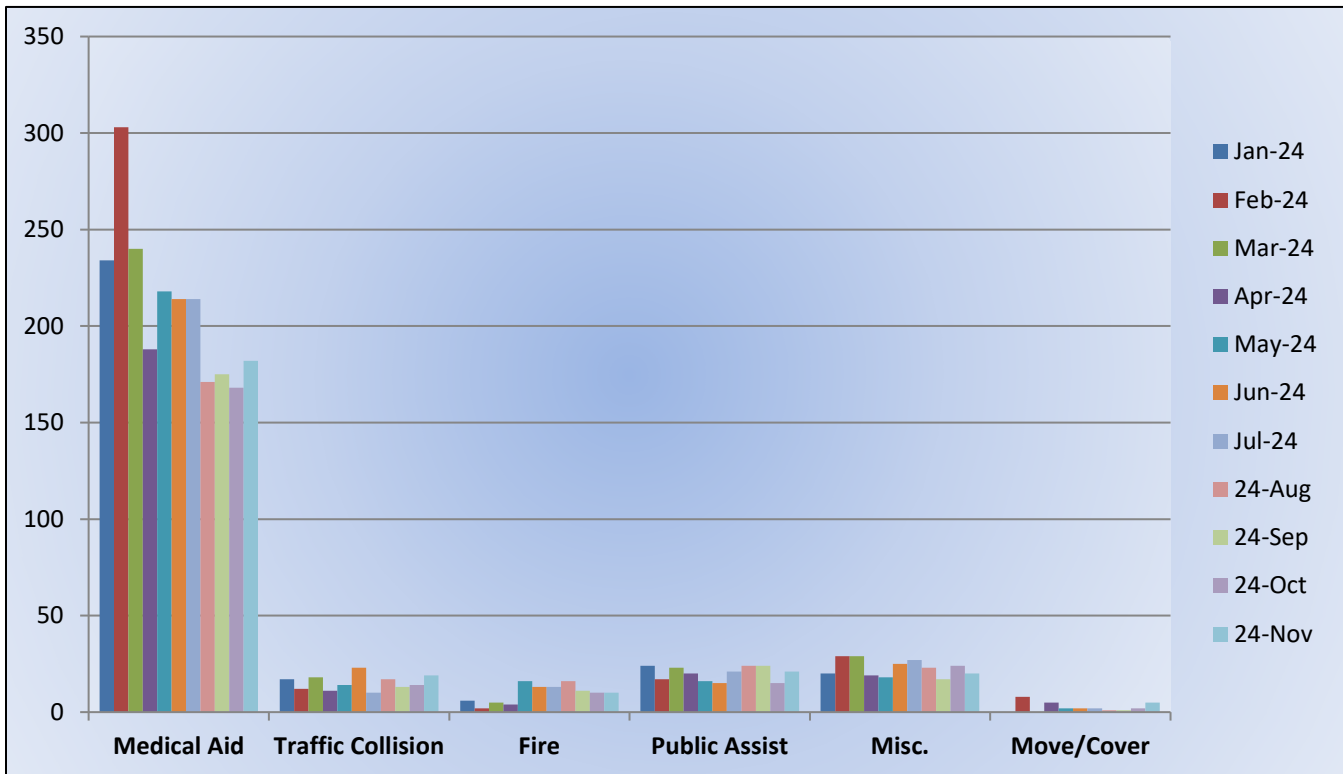
Transfer- 9

Misc- 3

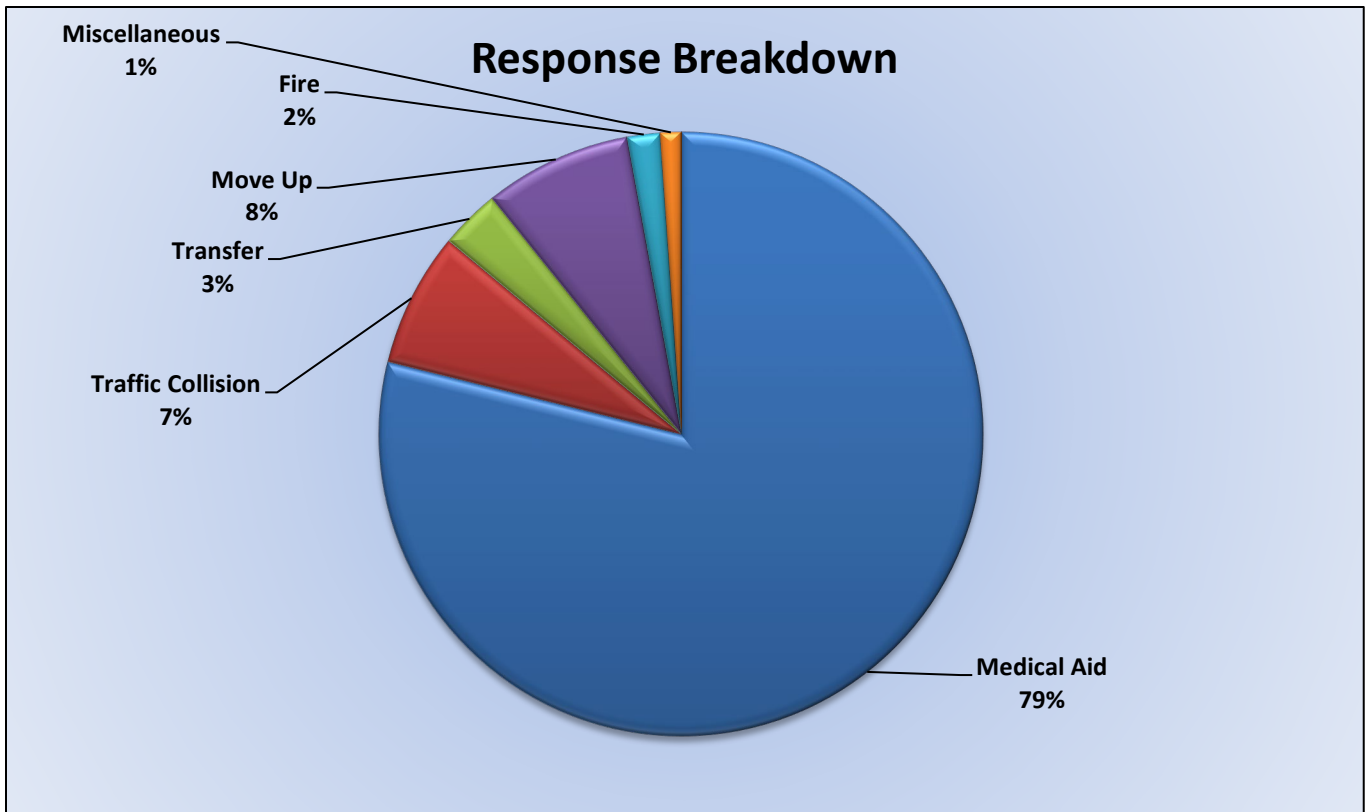
Move/Cover – 22



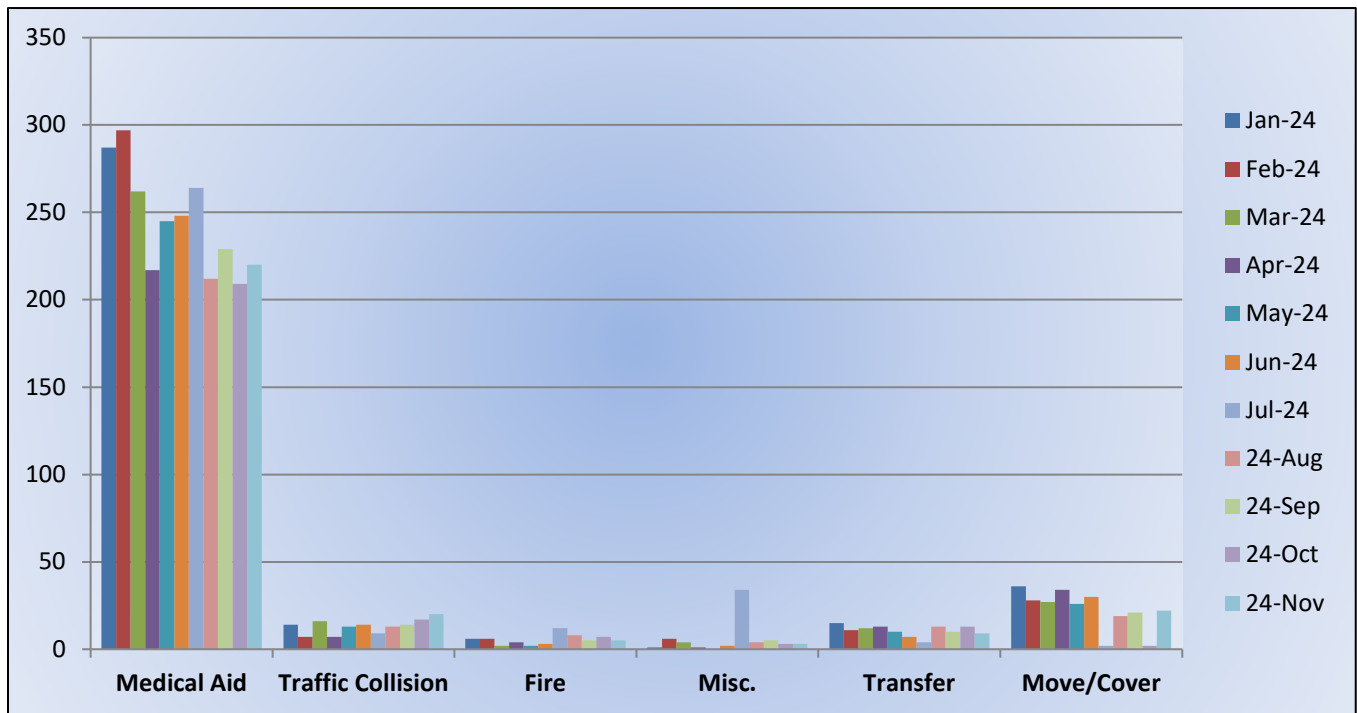
### E25 Monthly Statistics Comparison







### M25 Monthly Statistics Comparison





## El Dorado County Fire Protection District

---

### Station 28 Run Review November 2024

#### **ENGINE 28:** 120 Total Calls

Medical Aid - 67

Fire - 12

Traffic Collision - 16

Public Assist - 5

Misc - 12

Move/Cover – 8

#### **MEDIC 28:** 250 Total Calls

Medical Aid- 178

Fire- 5

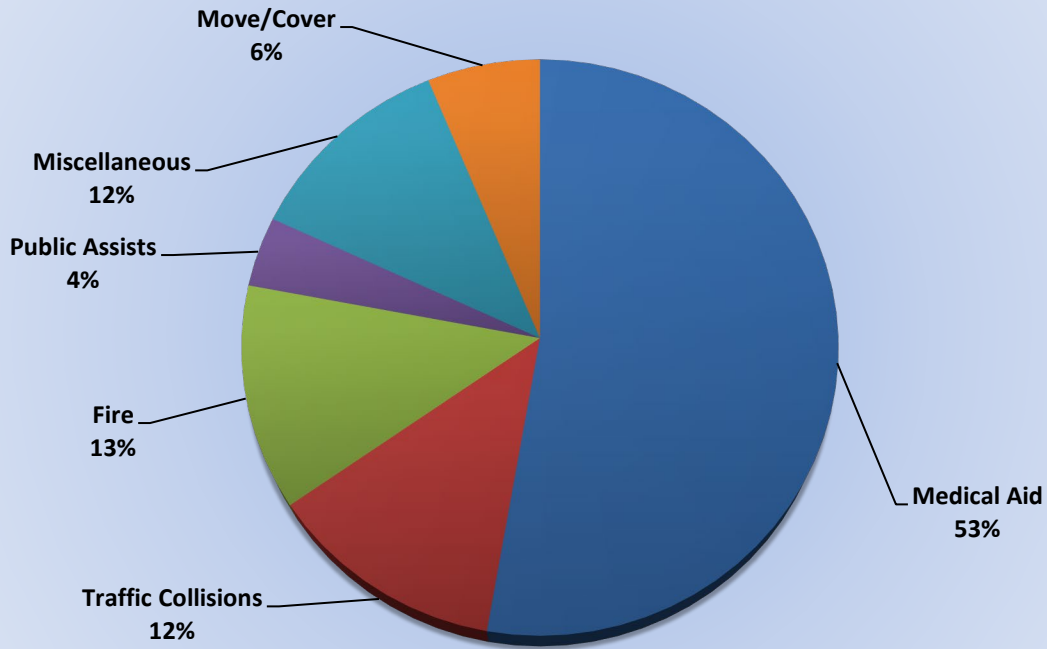
Traffic Collision- 19

Transfer- 2

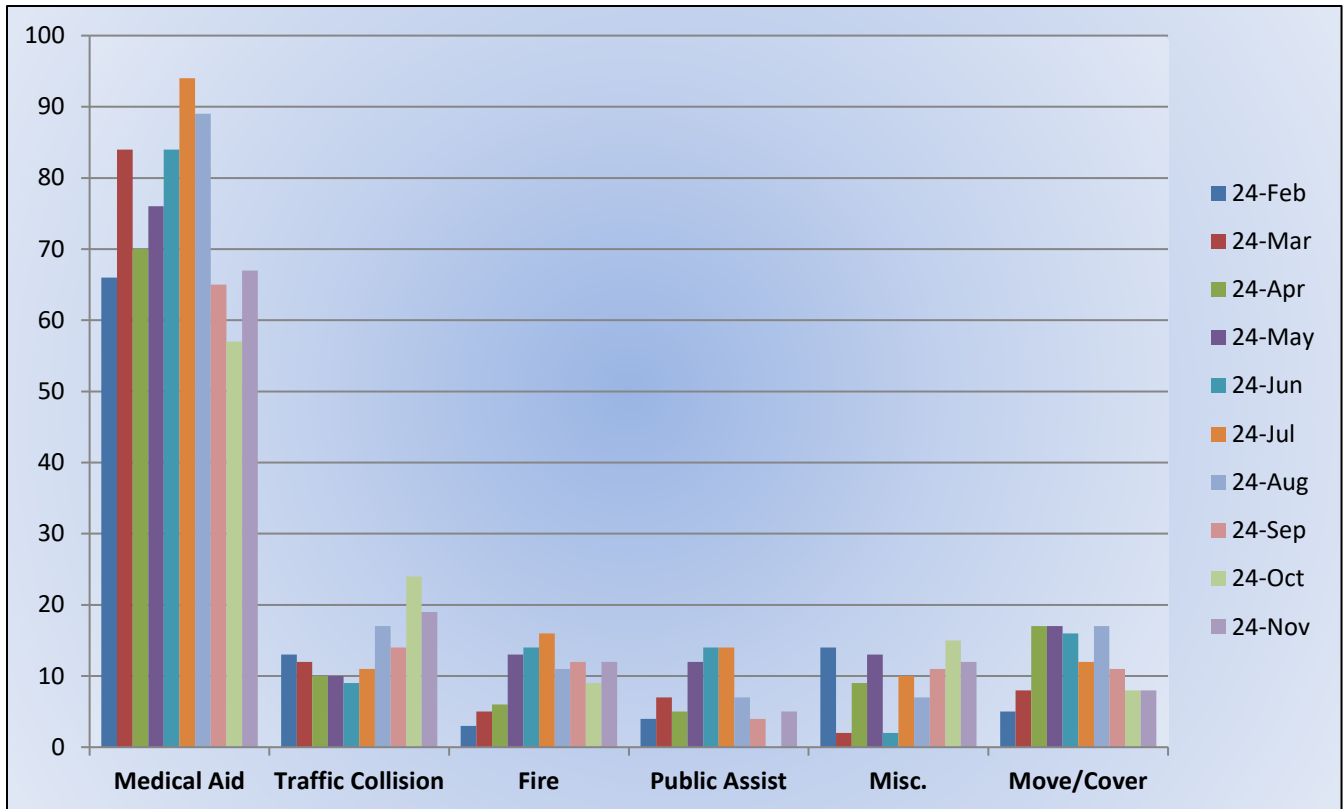
Misc- 2

Move/Cover – 44

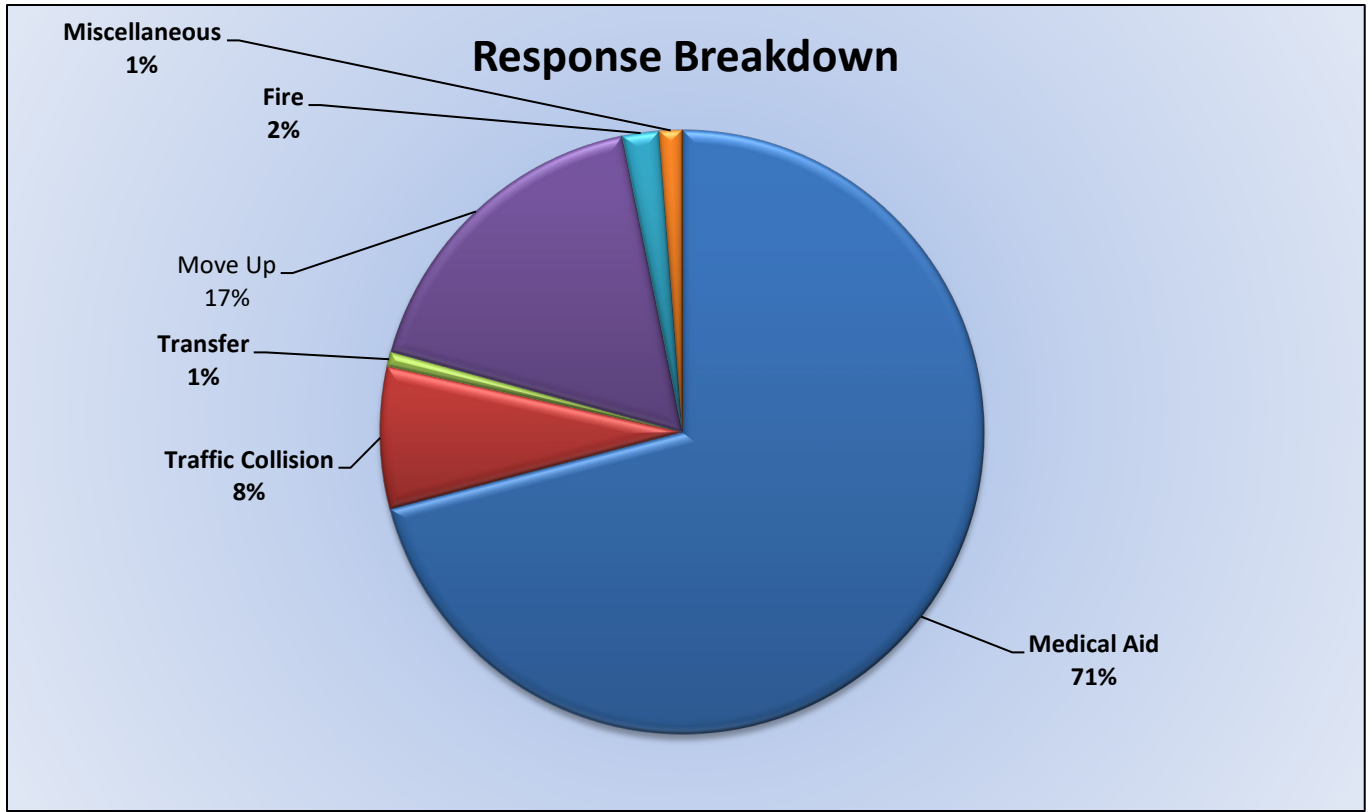
## Response Breakdown



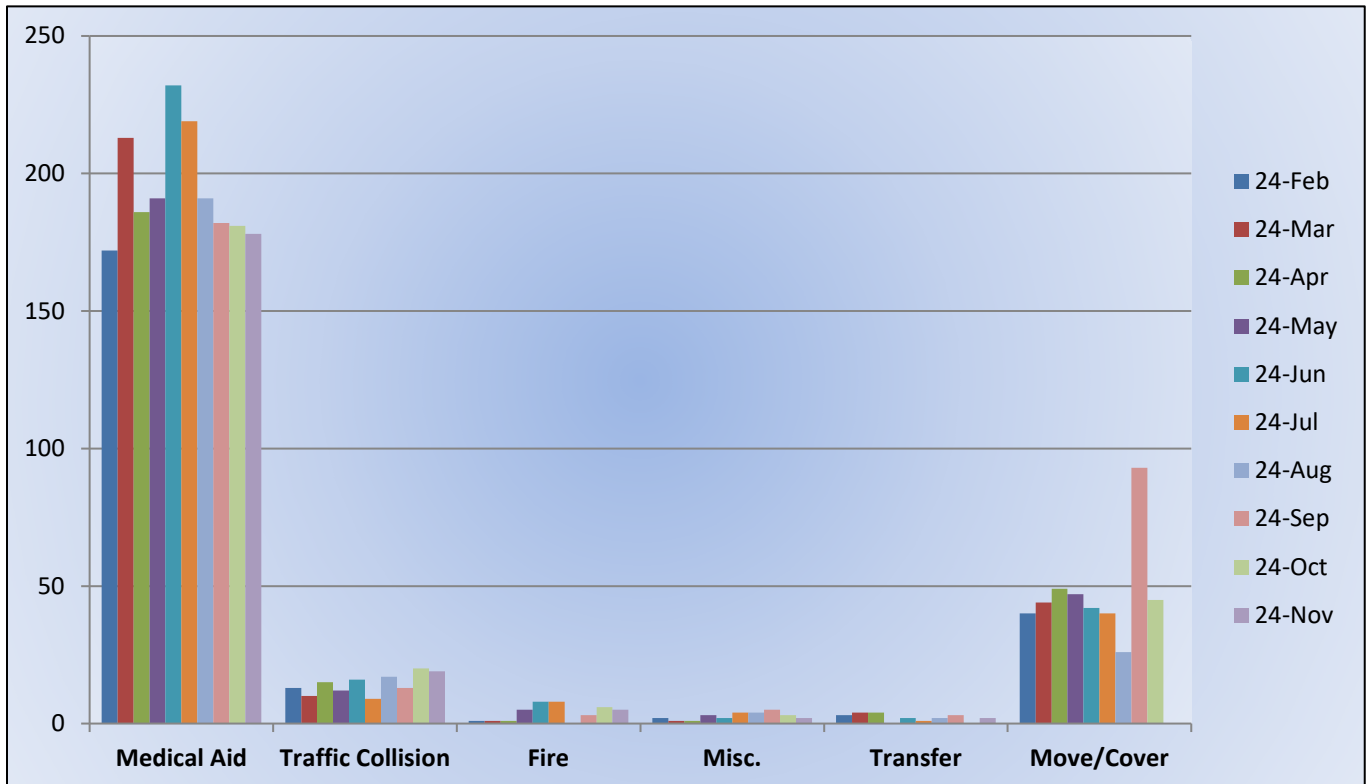
## E28 Monthly Statistics Comparison







### M28 Monthly Statistics Comparison





El Dorado County Fire Protection District

---

## Station 72 and Medic 49 Run Review November 2024

**ENGINE 72:** Total Calls 45

Medical Aid – 27

Fire – 1

Traffic Collision – 7

Public Assist – 3

Misc – 5

Move/Cover – 0

**MEDIC 49:** Total Calls 293

Medical Aid – 243

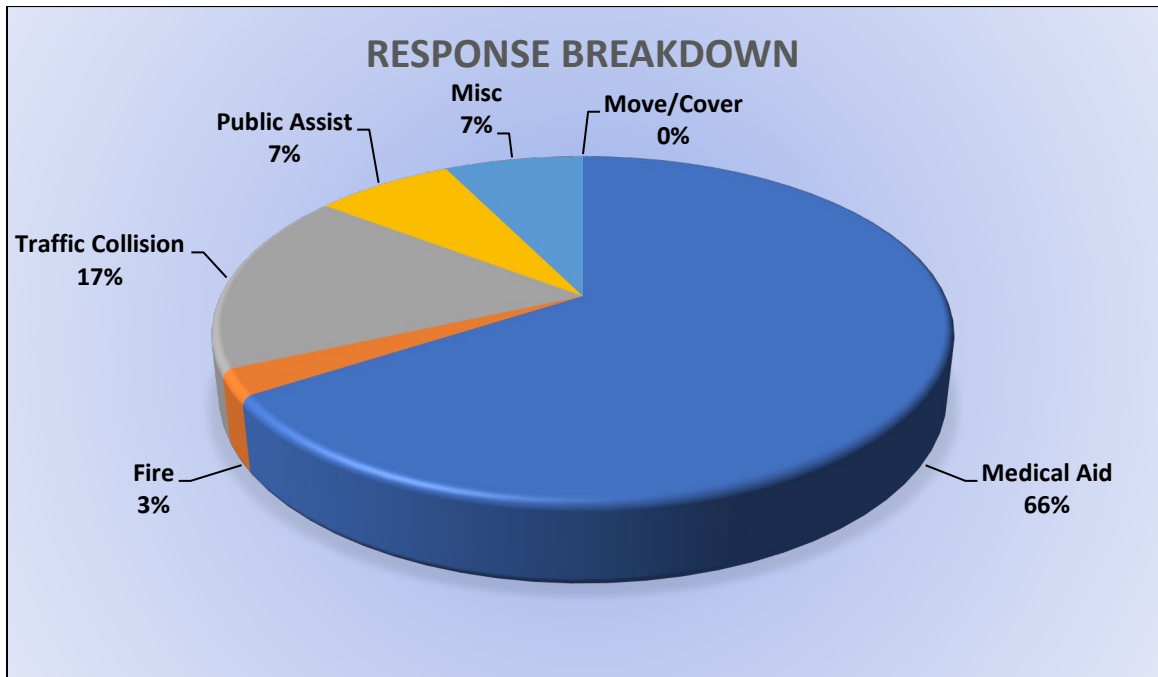
Fire – 4

Traffic Collision – 15

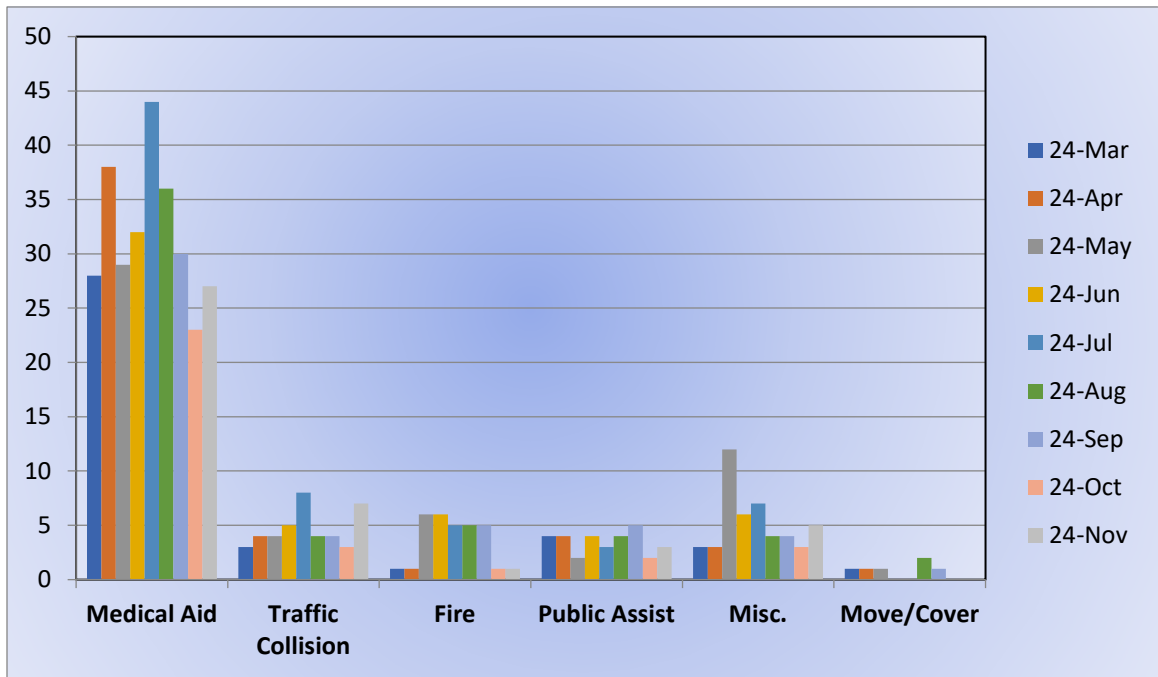
Transfer – 5

Misc – 5

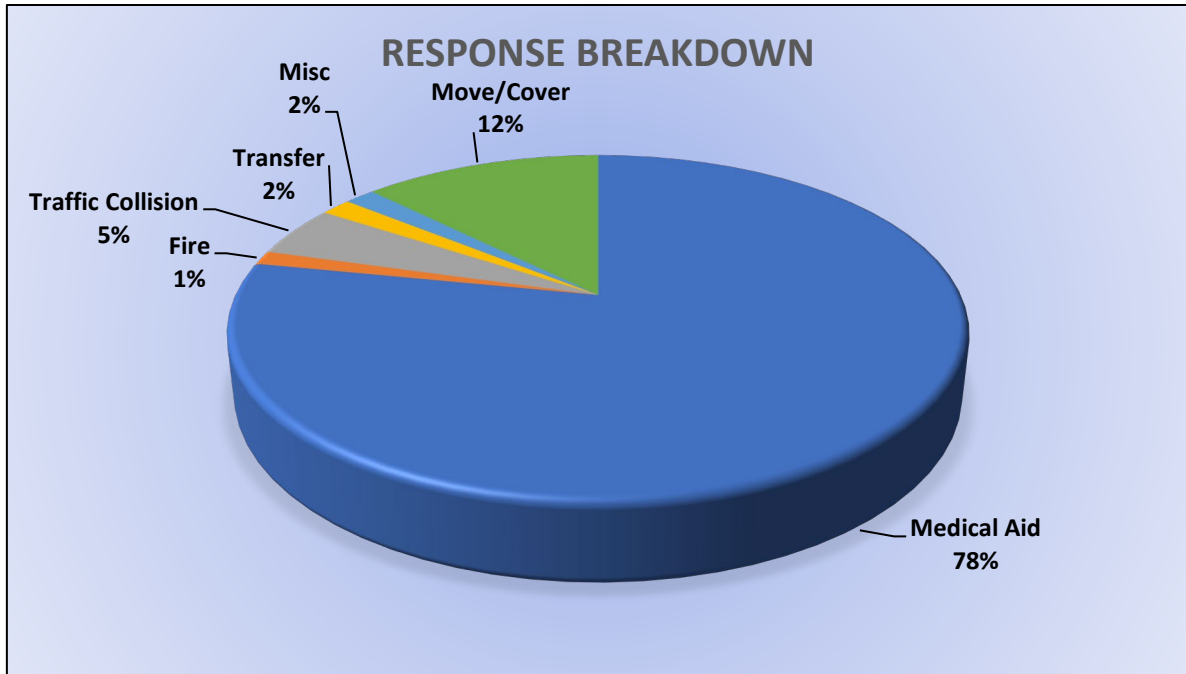
Move/Cover – 36



### E72 Monthly Statistics Comparison







### M49 Monthly Statistics Comparison

