



El Dorado County Fire Protection District

May 2023

Run Statistics – Engines & Medics



Engine Companies:

Engine 17: 70

Engine 19: 80

Engine 25: 321

Engine 28: 118

Engine 72: 57

Total Responses: 646

Medic Units:

Medic 17: 125

Medic 19: 103

Medic 25: 305

Medic 28: 212

Medic 49: 266

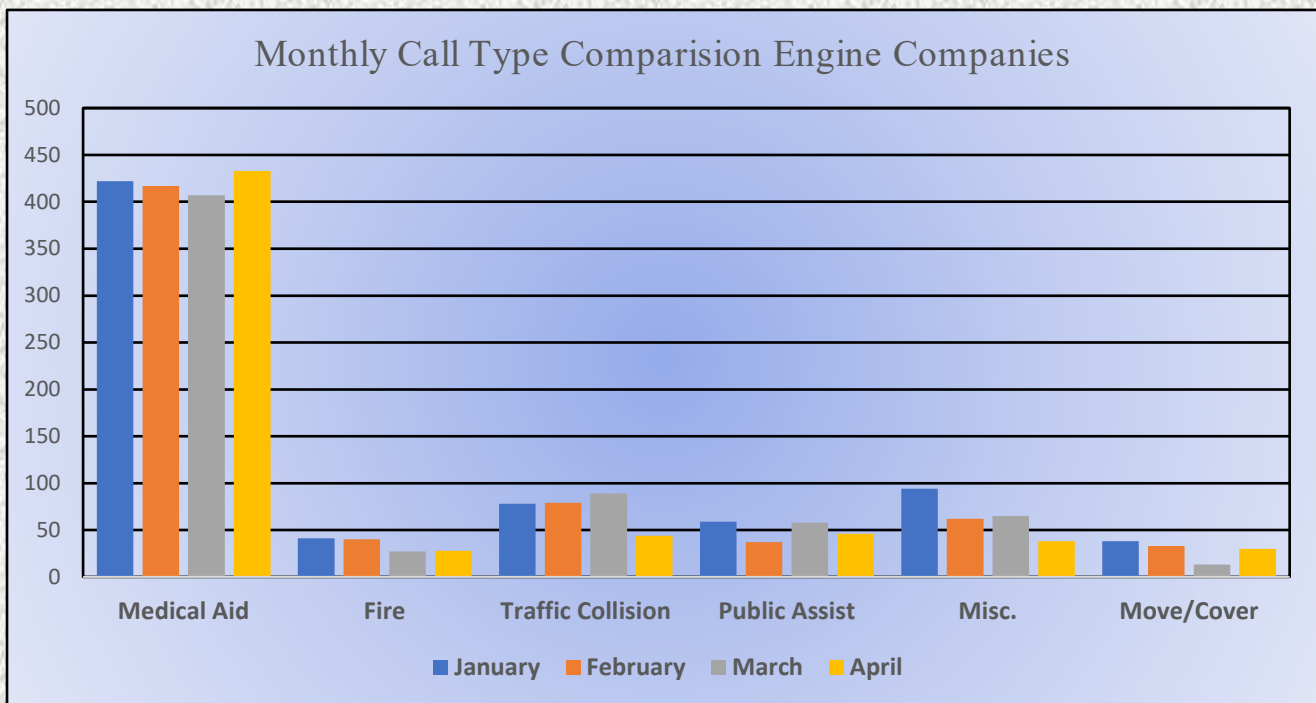
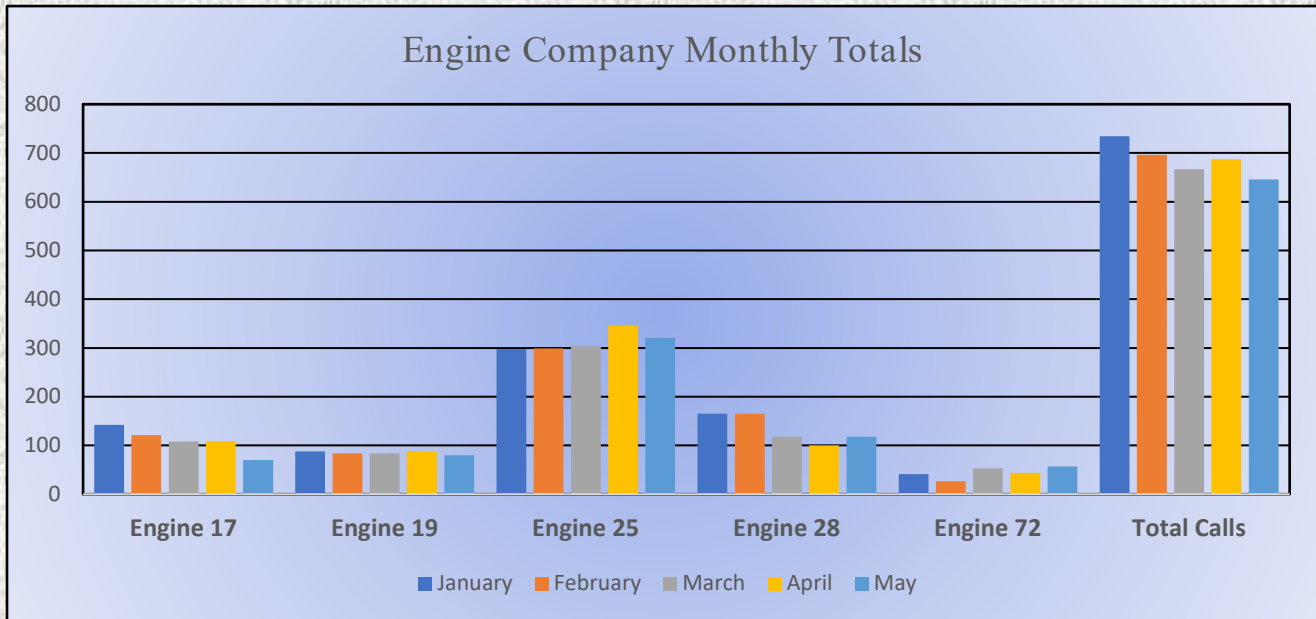
Total Responses: 1,011





El Dorado County Fire Protection District

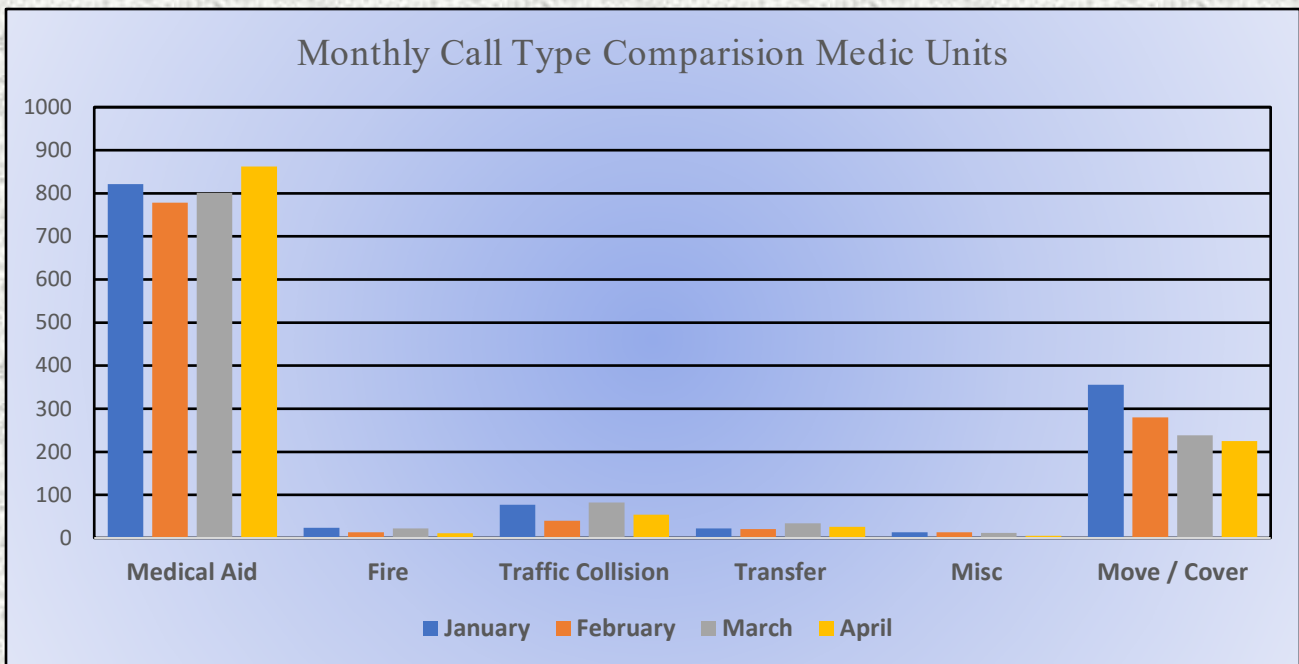
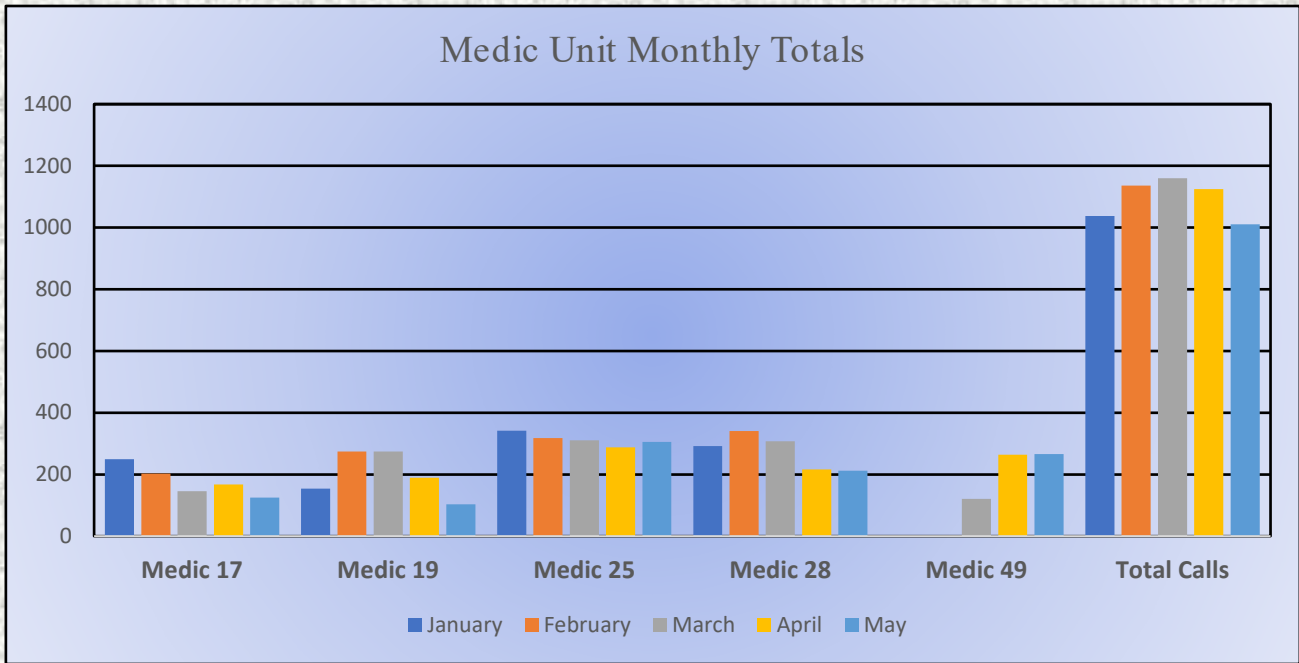
Monthly Run Statistics and Call Break Down May 2023 Engine Companies and Medic Units





El Dorado County Fire Protection District

Monthly Run Statistics and Call Break Down May 2023 Engine Companies and Medic Units





El Dorado County Fire Protection District



Station 25 Run Statistics May 2023

ENGINE 25: 321 Total Calls

- Medical Aid- 244
- Fire- 6
- Traffic Collision- 18
- Public Assist - 28
- Misc. – 18
- Move/Cover – 3

MEDIC 25: 305 Total Calls

- Medical Aid- 245
- Fire- 5
- Traffic Collision- 18
- Transfer - 12
- Misc.- 6
- Move/Cover - 29



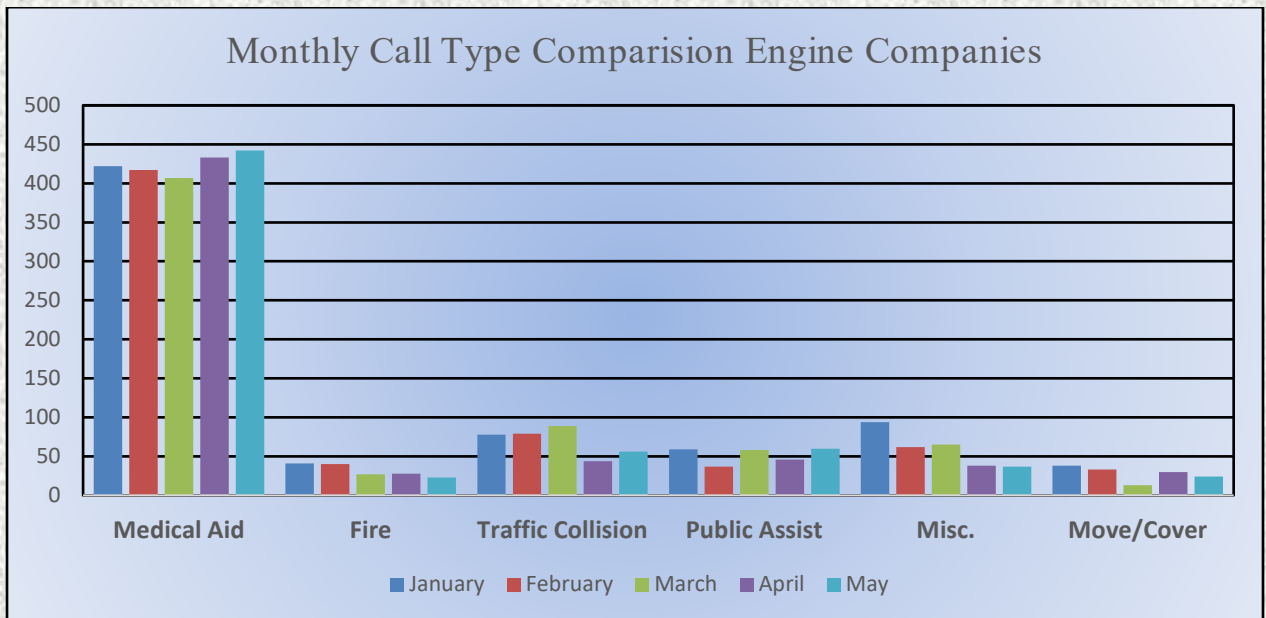
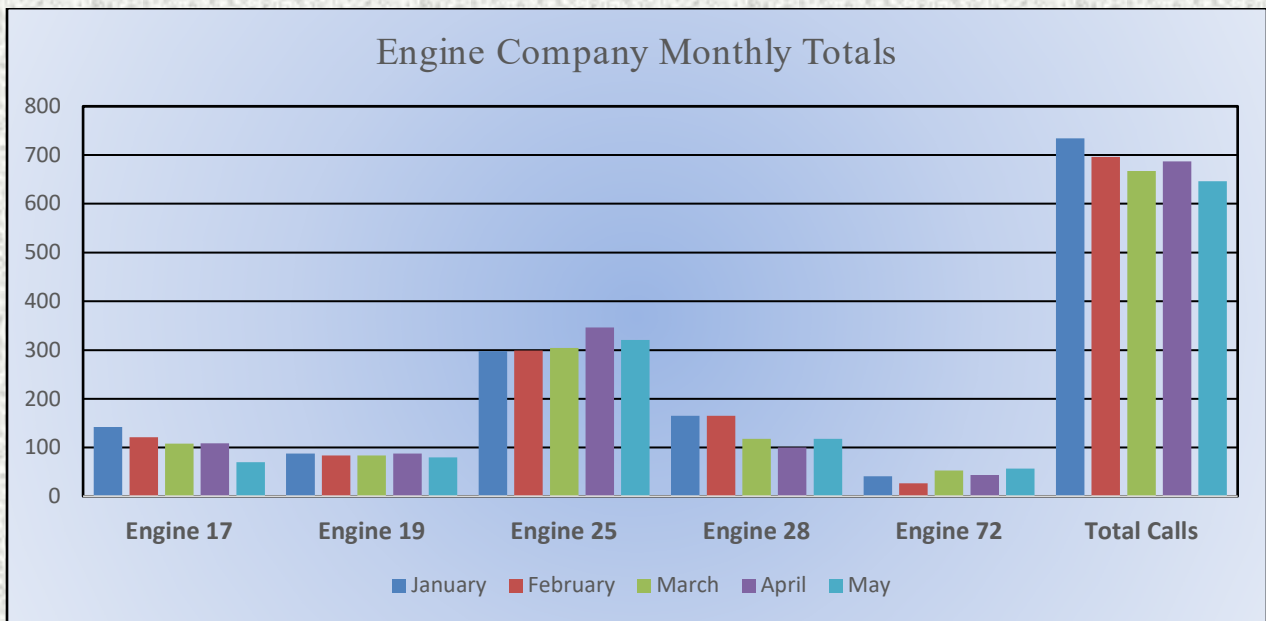


El Dorado County Fire Protection District



Monthly Run Statistics and Call Break Down May 2023 Engine Companies and Medic Units

Total Responses for Engine Companies: 646

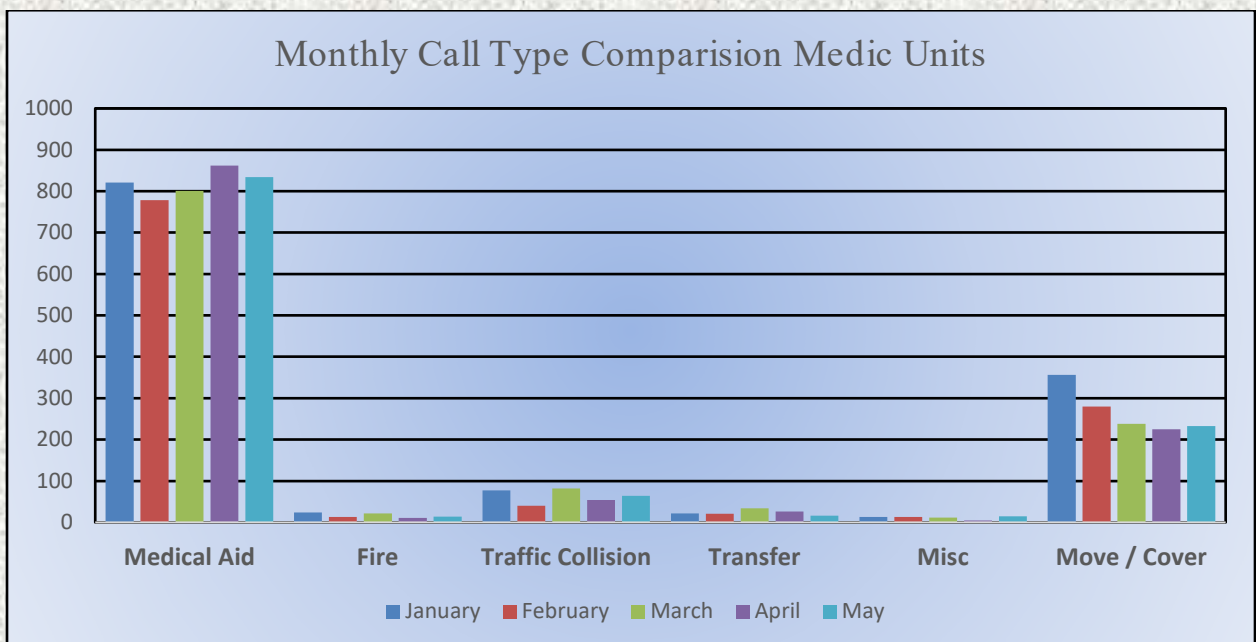
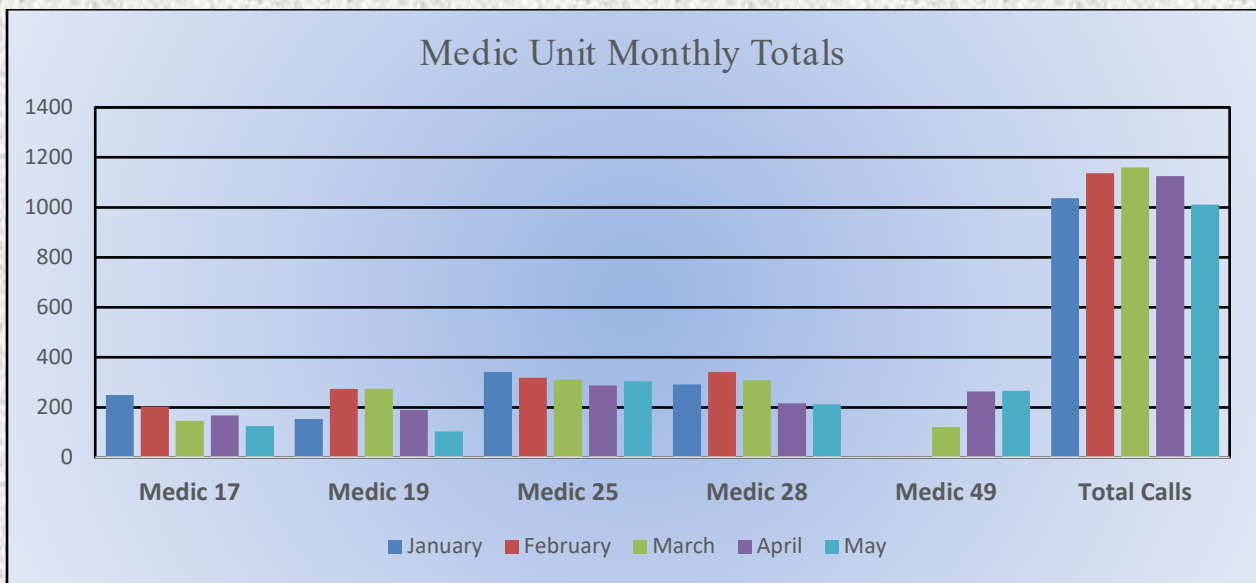




El Dorado County Fire Protection District

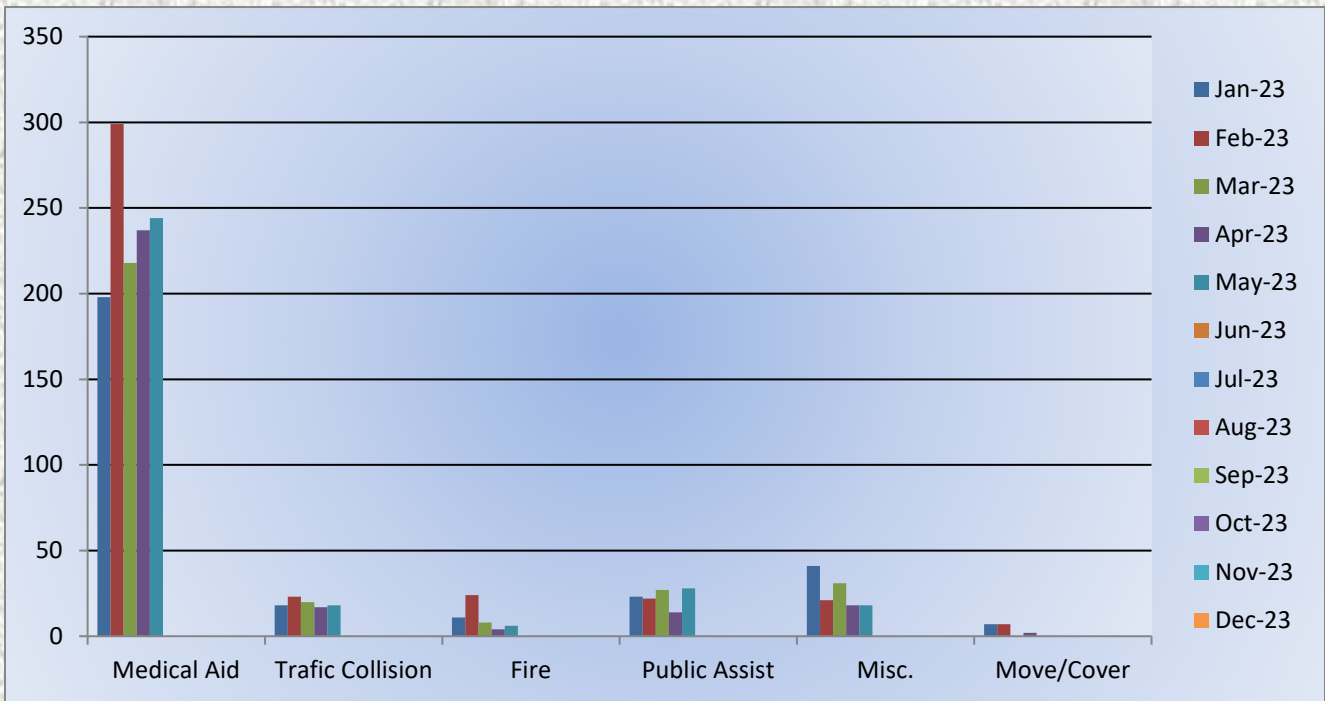
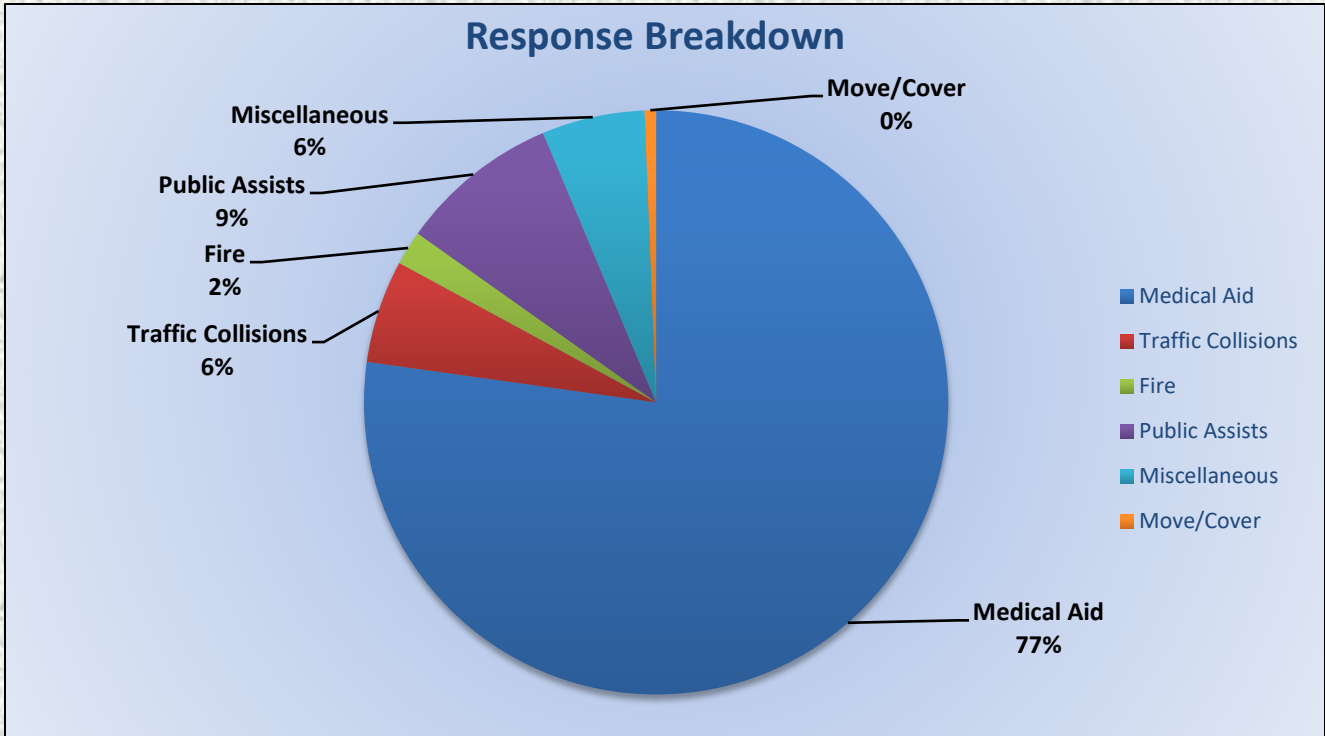


Total Responses for Medic Units: 1011



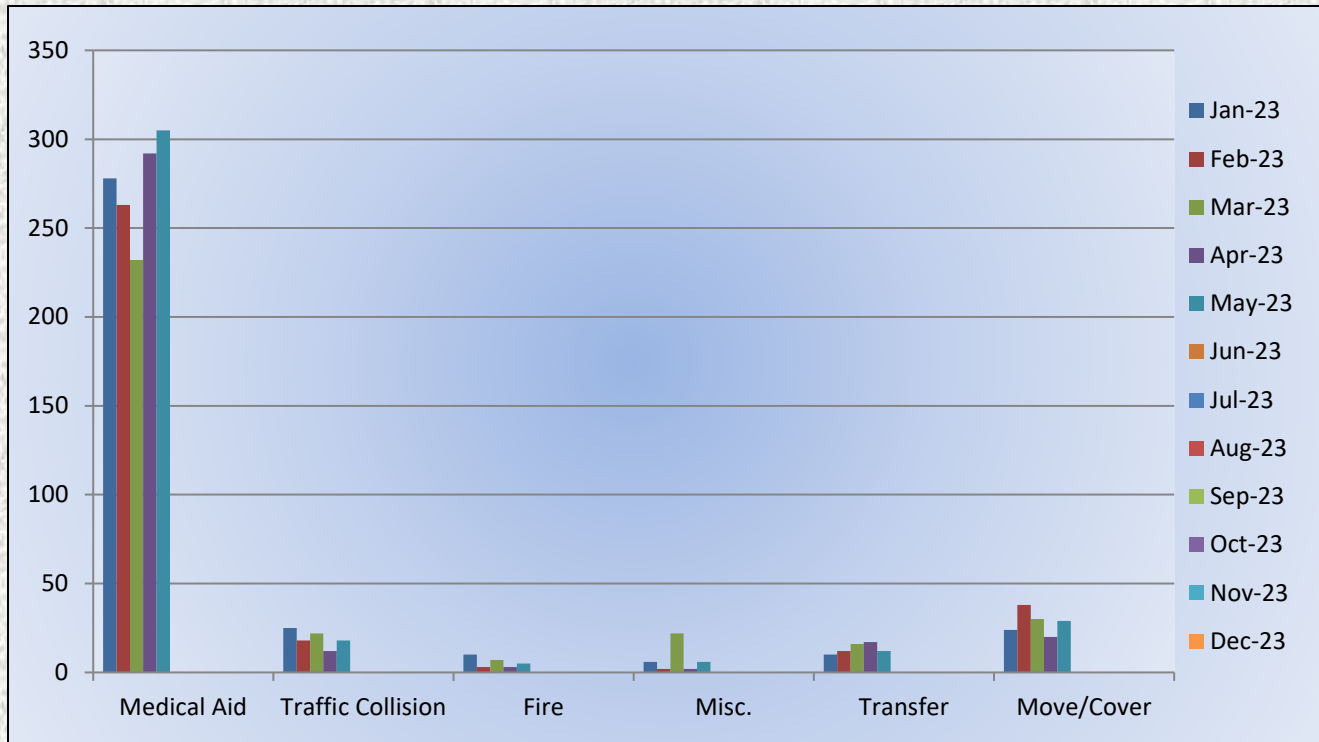
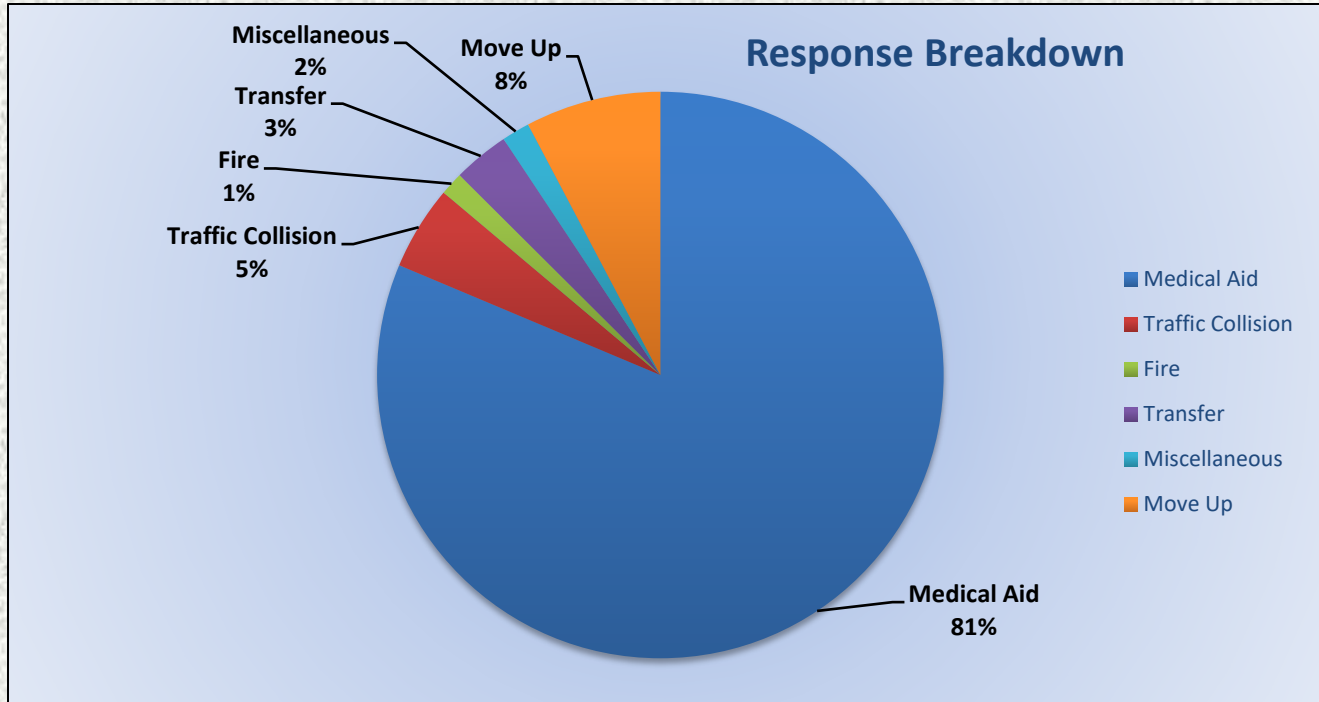


Engine 25 Monthly Statistics Comparison





Medic 25 Monthly Statistics Comparison





El Dorado County Fire Protection District

Station 17 / 21 Run Review May 2023

ENGINE 17: 70 Total Calls

Medical Aid- 37

Fire- 6

Traffic Collision- 11

Public Assist- 9

Misc- 6

Move/Cover - 1

MEDIC 17: 125 Total Calls

Medical Aid- 111

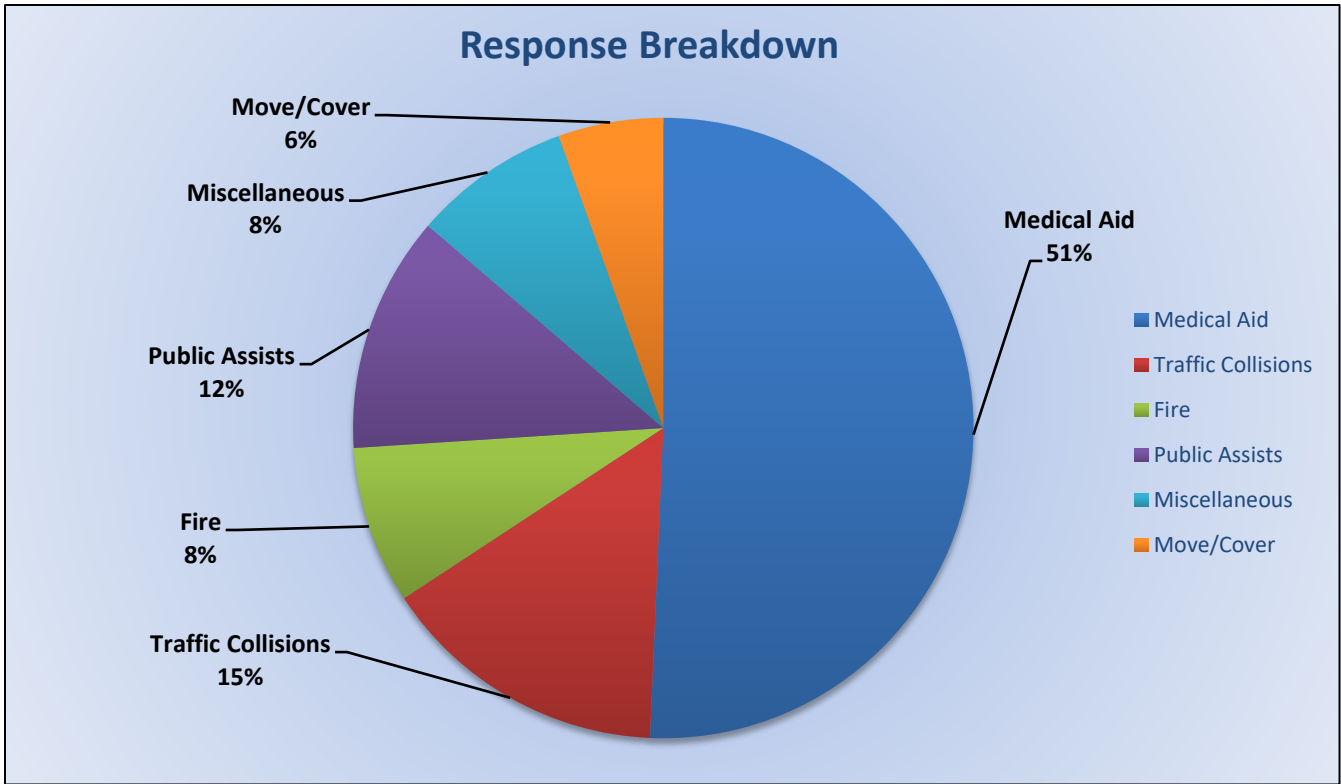
Fire- 2

Traffic Collision- 10

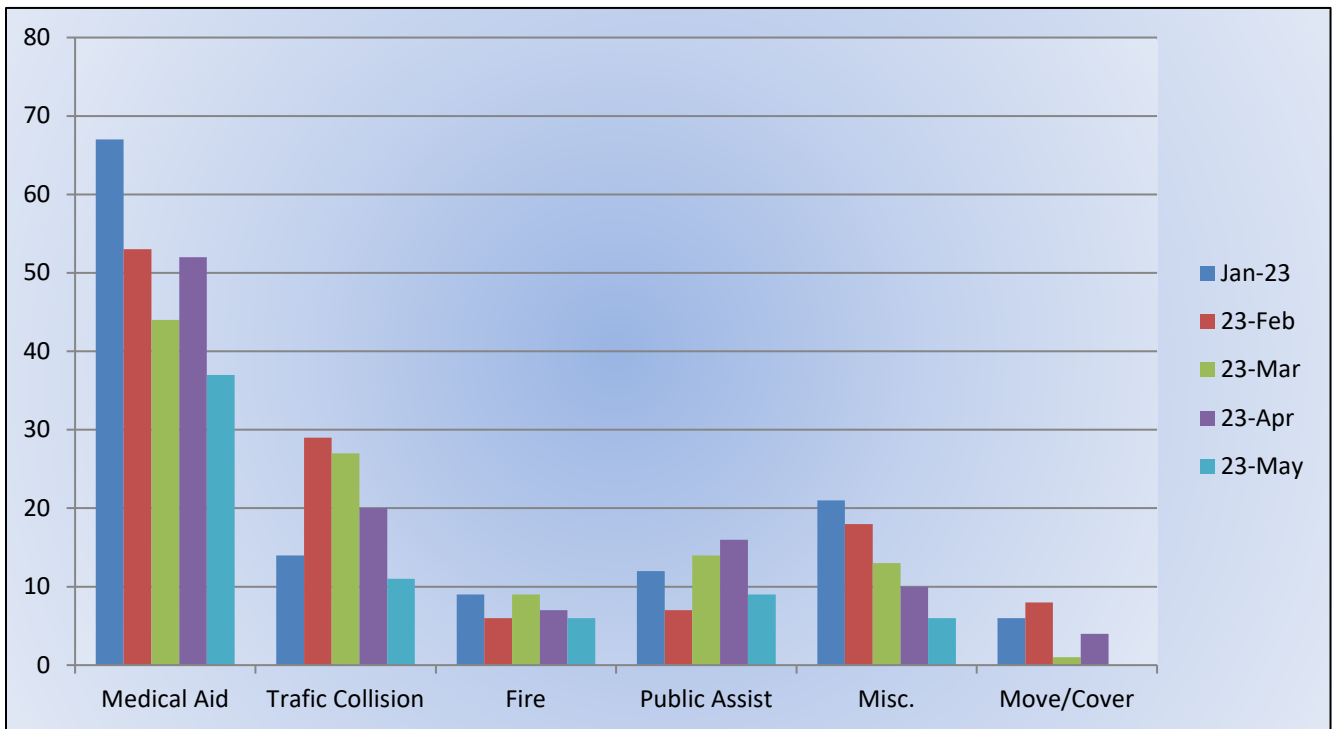
Transfer- 1

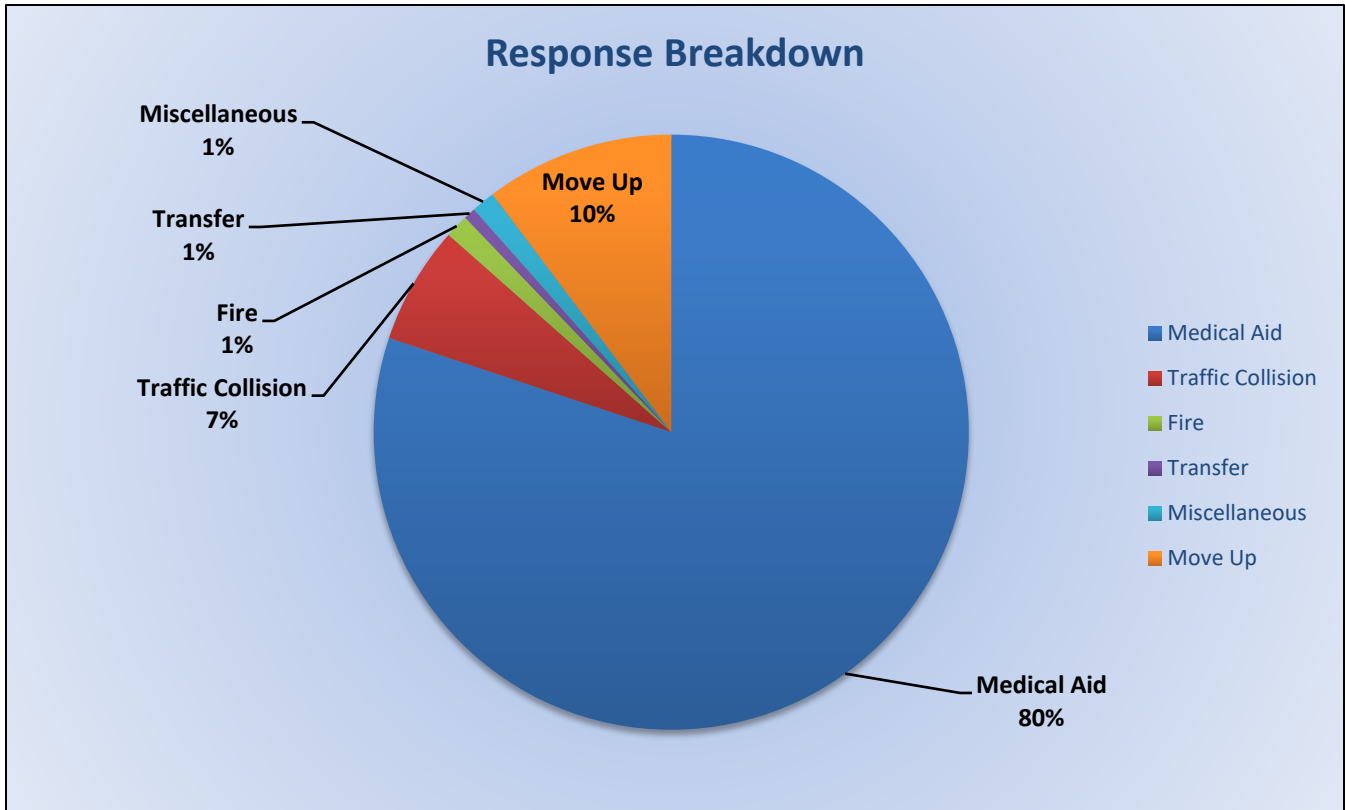
Misc- 2

Move/Cover - 9

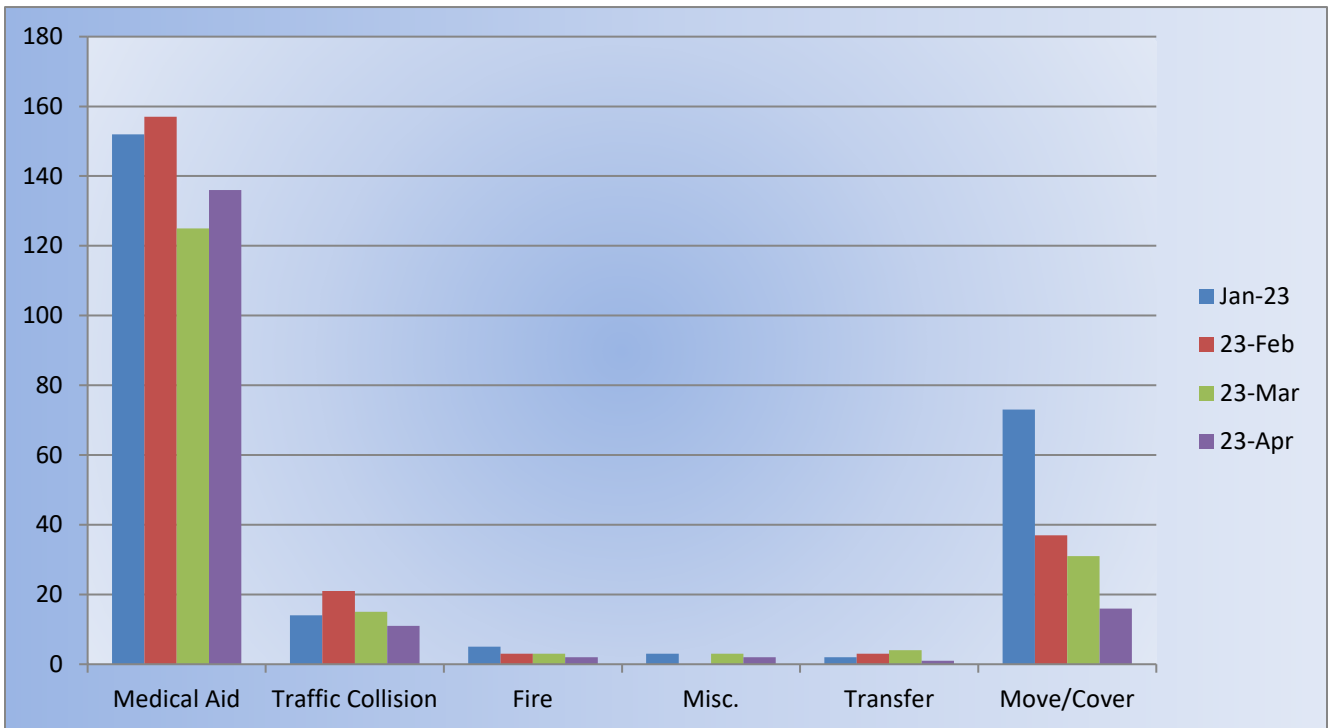


E17 Monthly Statistics Comparison





M17 Monthly Statistics Comparison





El Dorado County Fire Protection District

Station 19 Run Review May 2023

ENGINE 19: 80 Total Calls

Medical Aid - 49

Fire - 3

Traffic Collision - 9

Public Assist - 8

Misc. - 2

Move/Cover - 9

MEDIC 19: 103 Total Calls

Medical Aid- 91

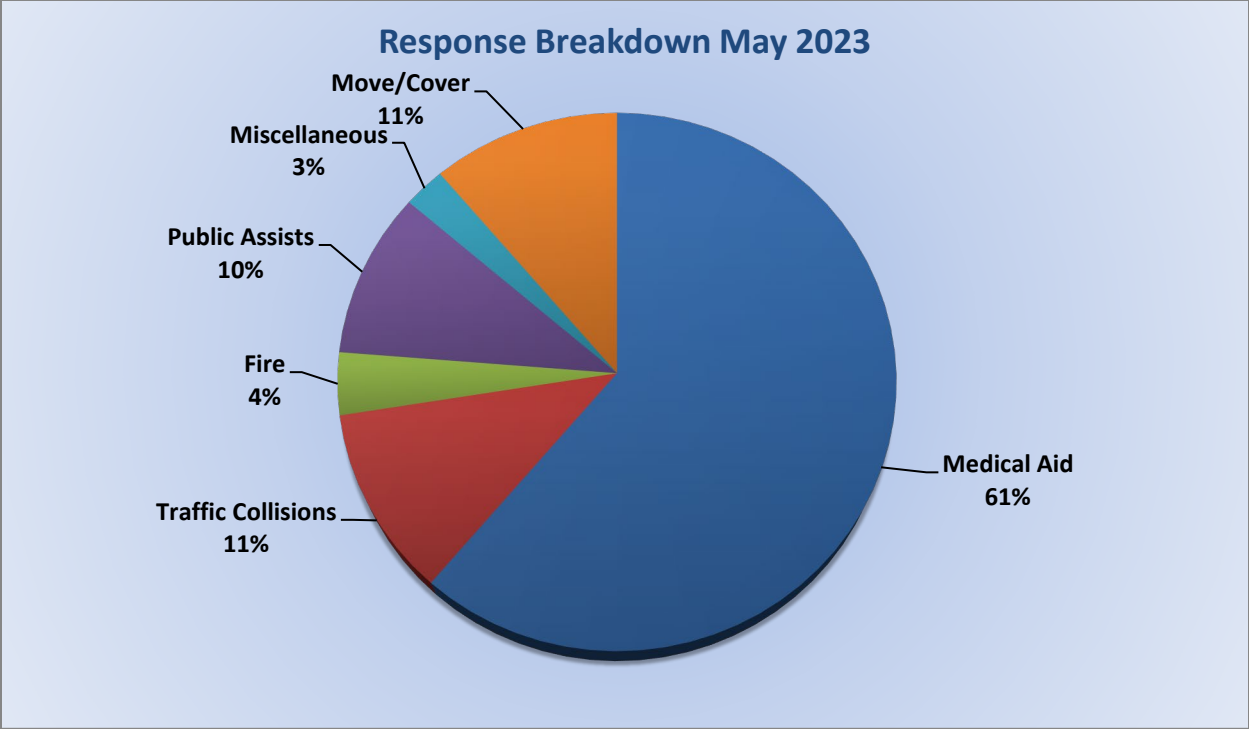
Fire- 3

Traffic Collision- 8

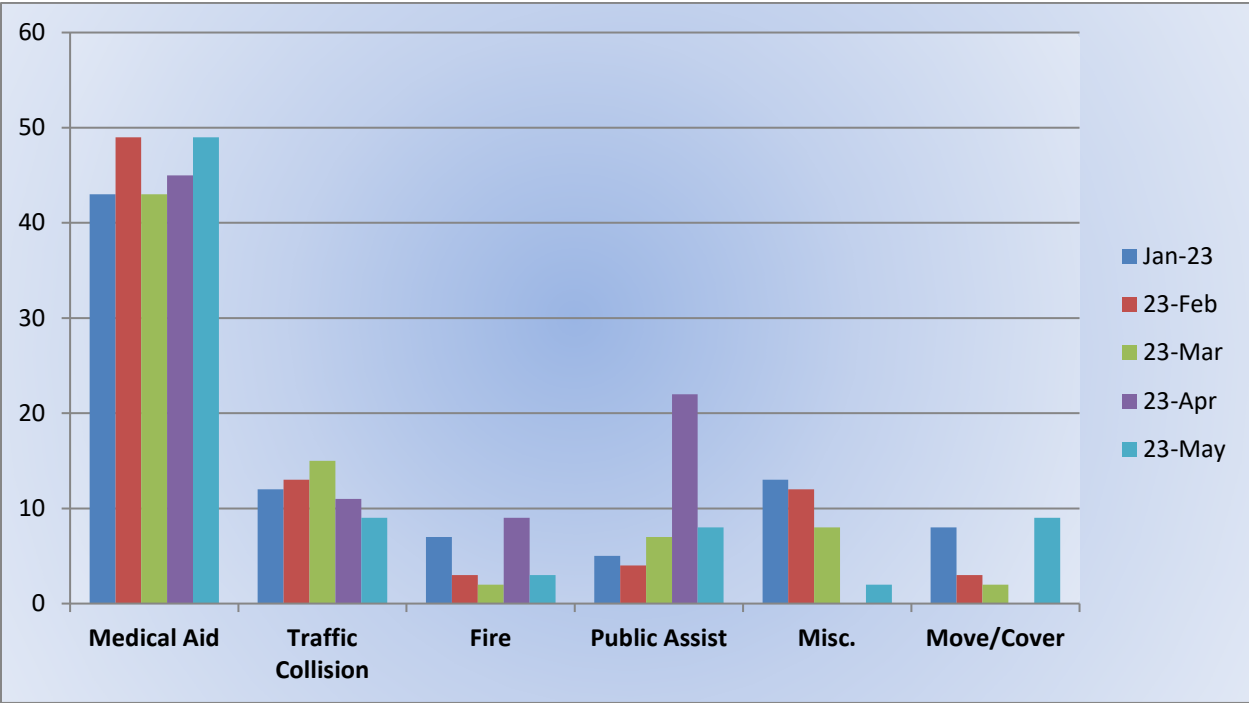
Transfer- 1

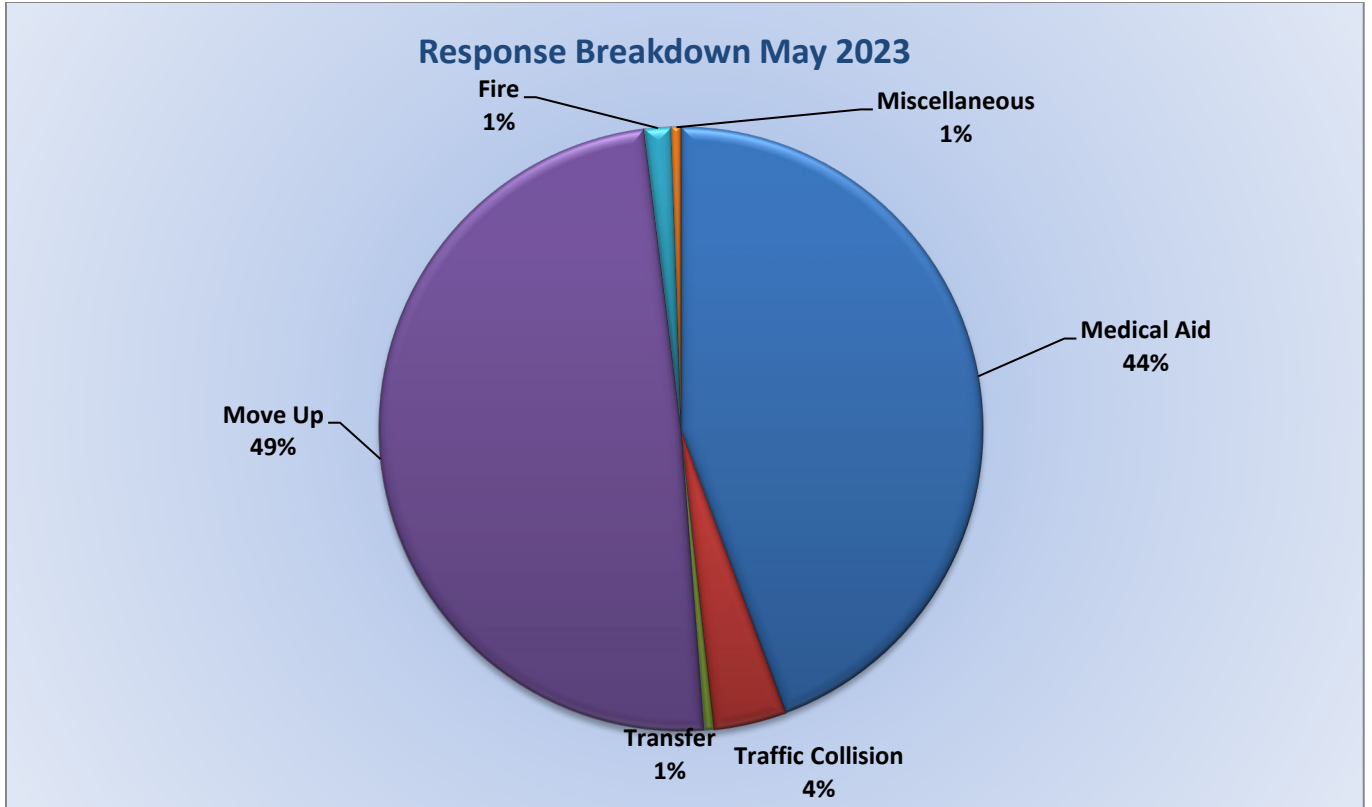
Misc.- 1

Move/Cover - 101

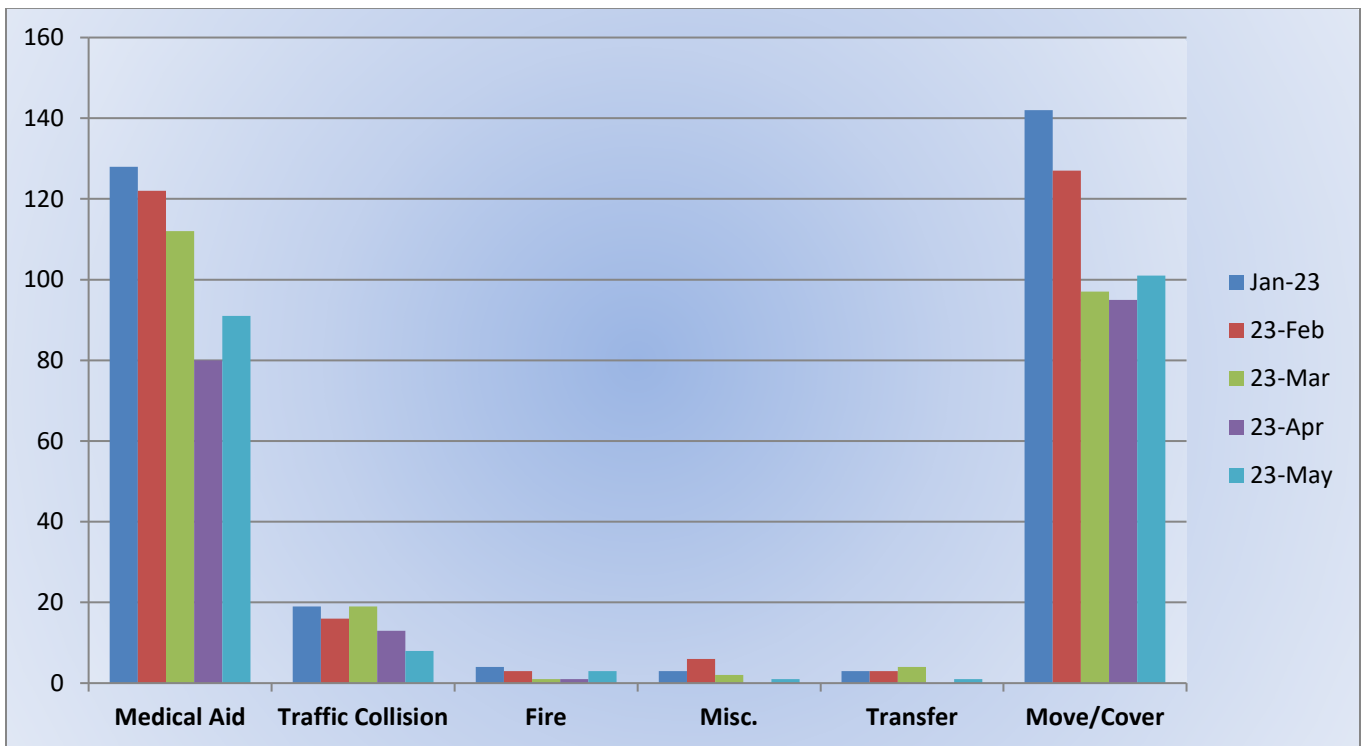


E19 Monthly Statistics Comparison





M19 Monthly Statistics Comparison





El Dorado County Fire Protection District

Station 25 Run Review May 2023

ENGINE 25: 321 Total Incidents

Medical Aid- 244

Fire- 6

Traffic Collision- 18

Public Assist- 28

Misc- 18

Move/Cover - 3

MEDIC 25: 305 Total Incidents

Medical Aid- 245

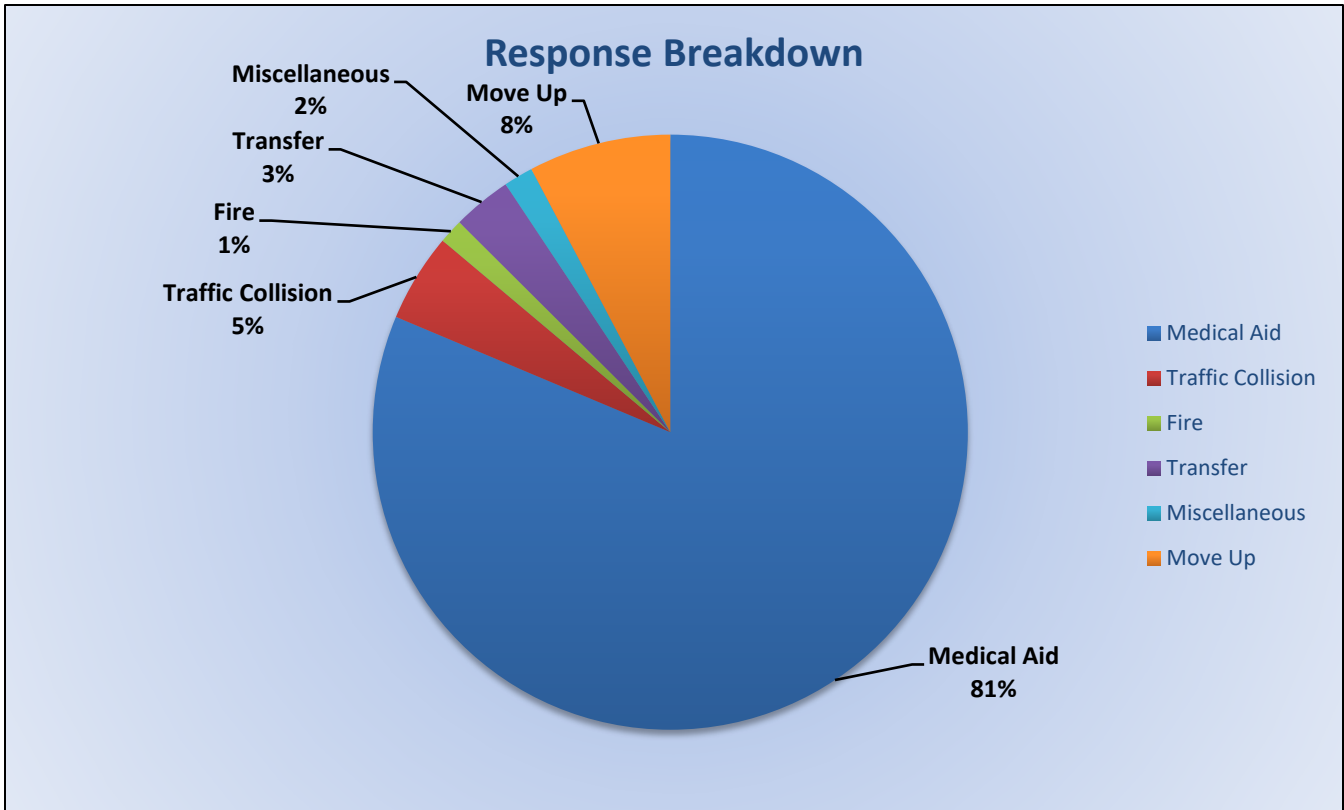
Fire- 5

Traffic Collision- 18

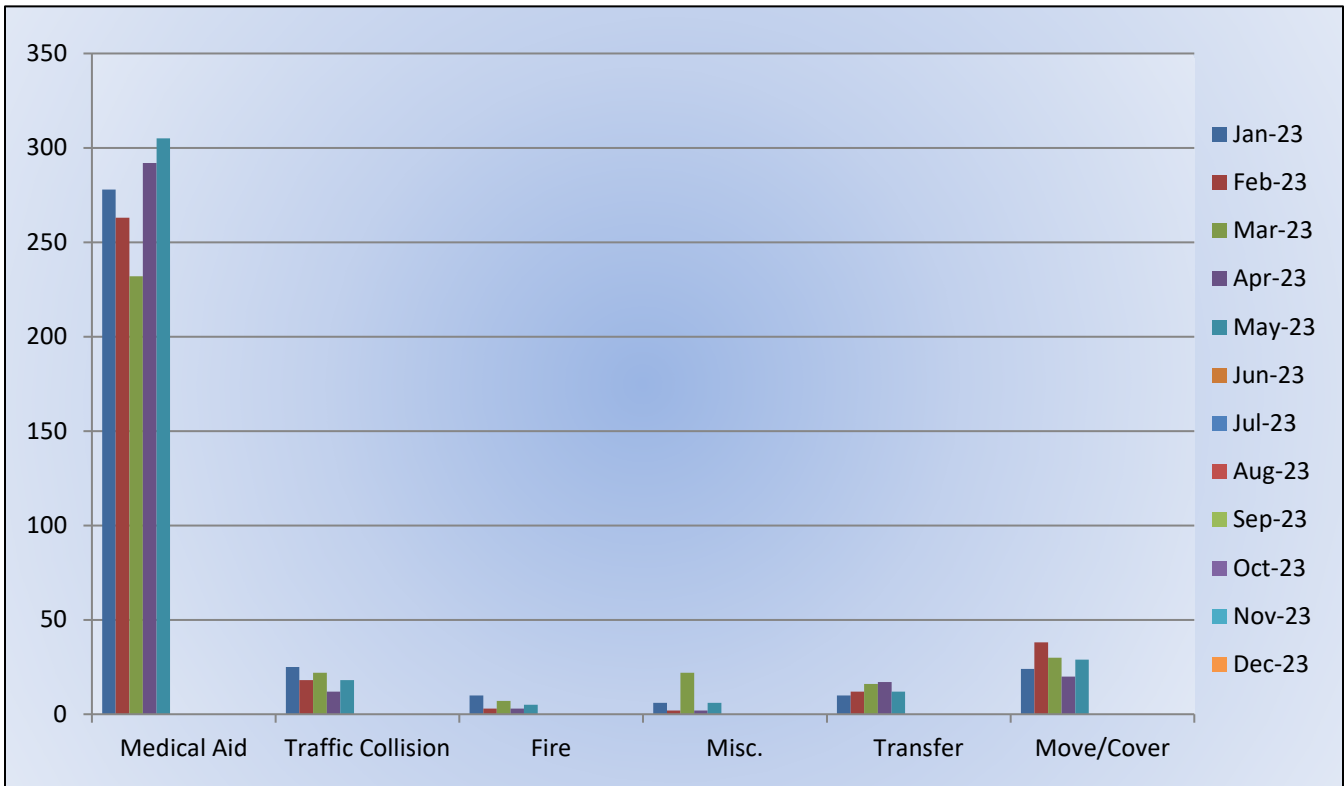
Transfer- 12

Misc- 6

Move/Cover – 29



M25 Monthly Statistics Comparison





El Dorado County Fire Protection District

Station 28 Run Review May 2023

ENGINE 28: 118 Total Calls

Medical Aid - 77

Fire - 3

Traffic Collision - 12

Public Assist - 10

Misc - 6

Move/Cover - 10

MEDIC 28: 212 Total Calls

Medical Aid- 186

Fire- 3

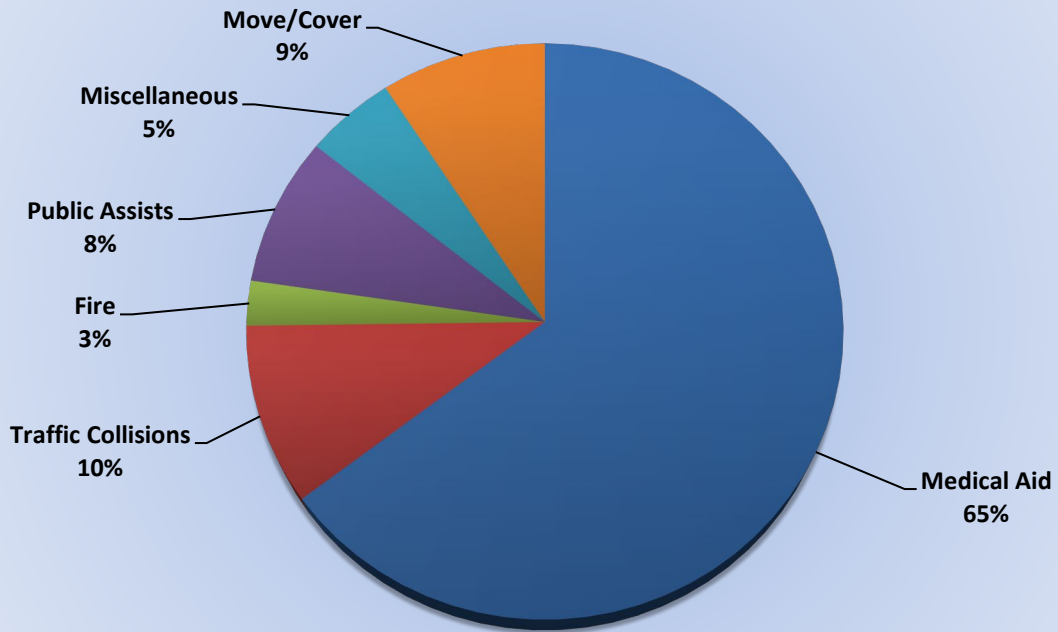
Traffic Collision- 16

Transfer- 2

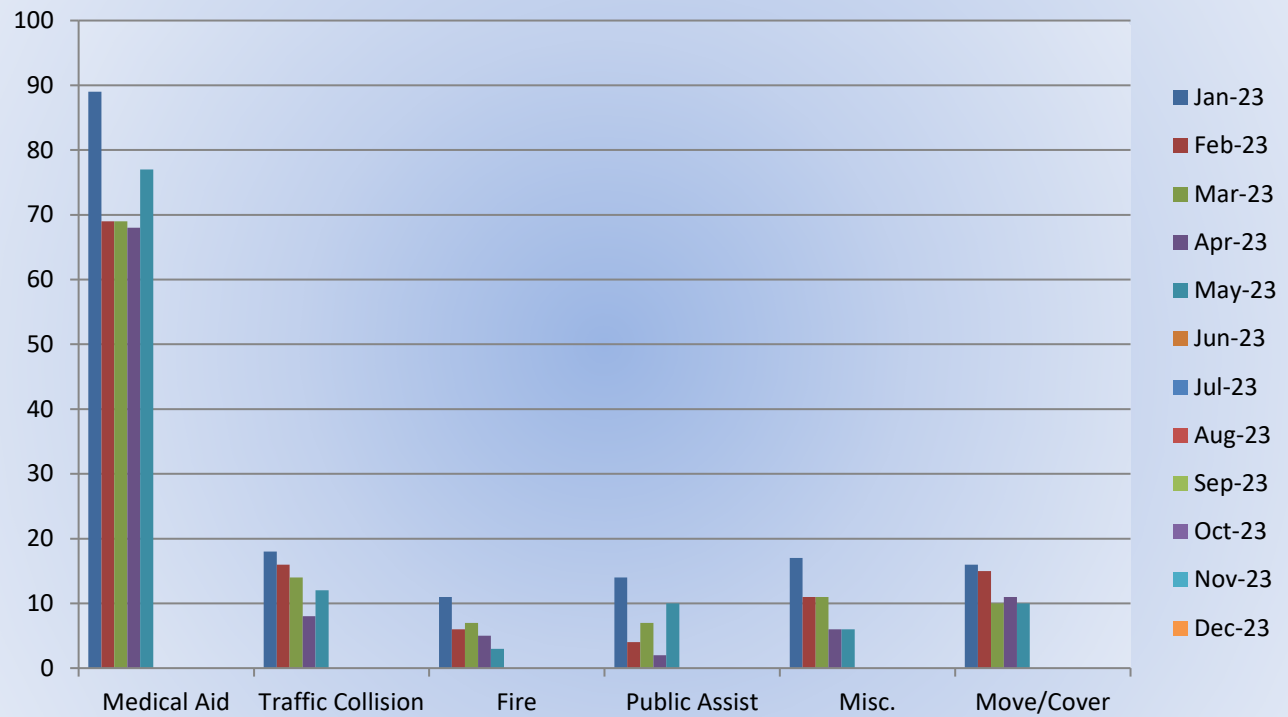
Misc- 5

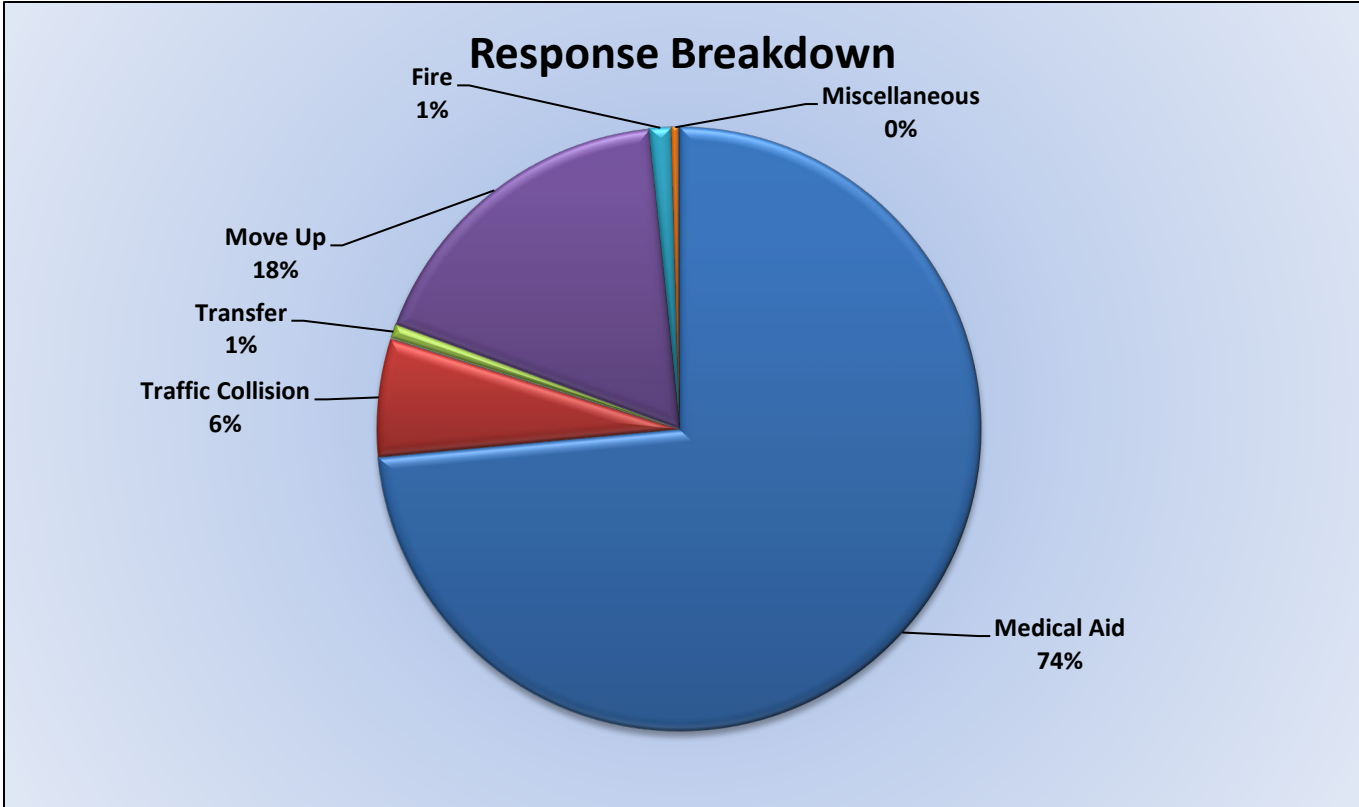
Move/Cover – 45

Response Breakdown

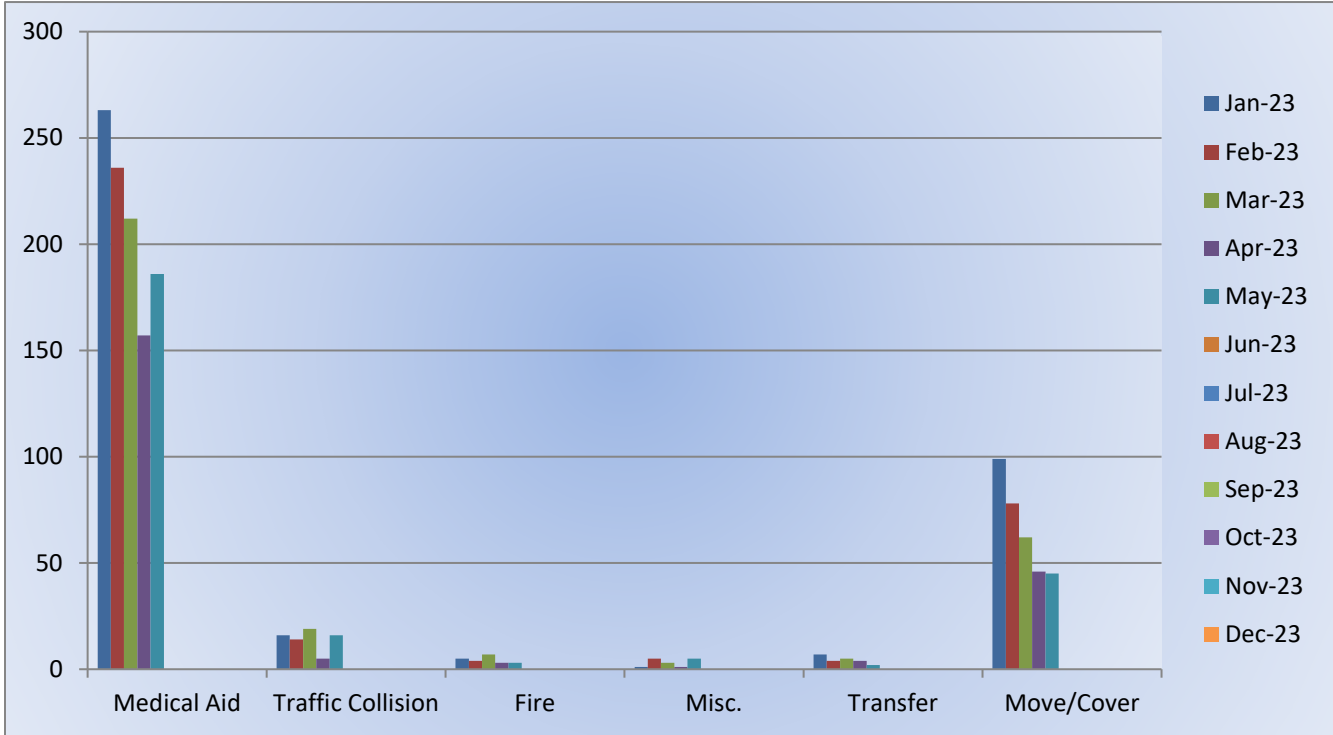


E28 Monthly Statistics Comparison





M28 Monthly Statistics Comparison





El Dorado County Fire Protection District

Station 72 and Medic 49 Run Review May 2023

ENGINE 72: 57 Total Calls

Medical Aid - 35

Fire - 5

Traffic Collision - 6

Public Assist - 5

Misc - 5

Move/Cover - 1

MEDIC 49: 266 Total Calls

Medical Aid- 201

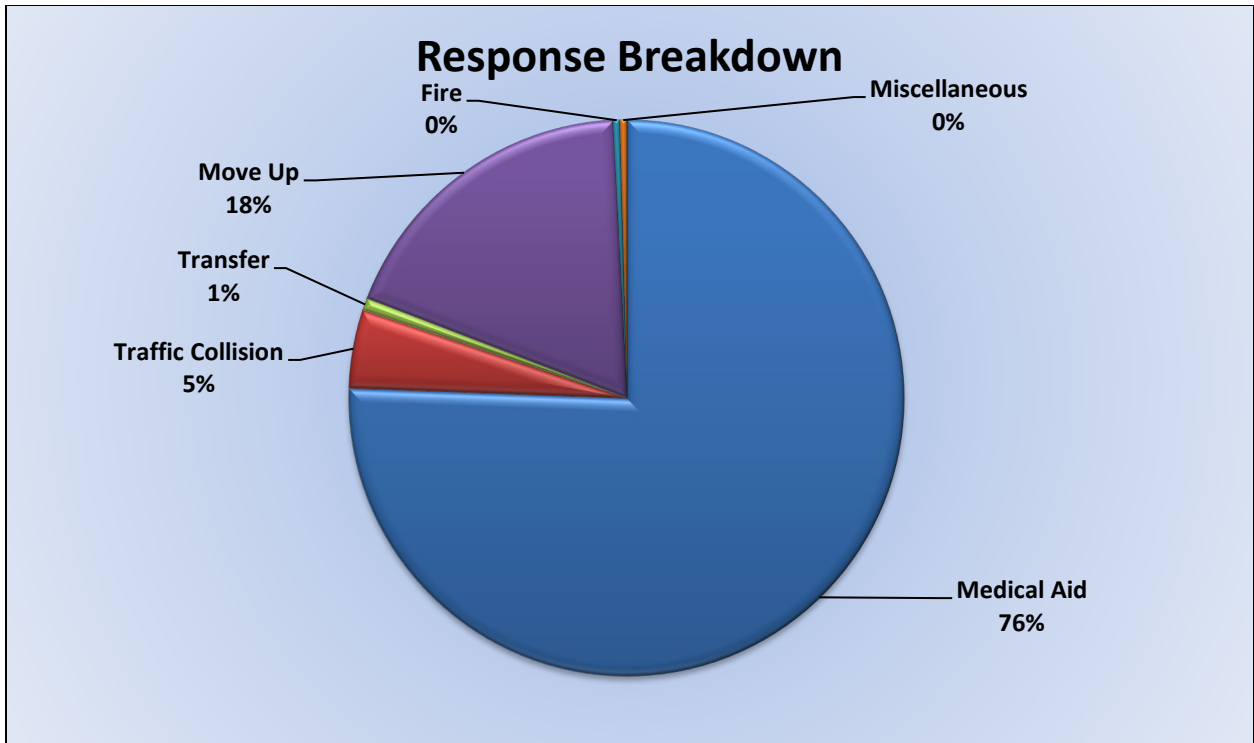
Fire- 1

Traffic Collision- 12

Transfer- 2

Misc- 1

Move/Cover – 49



M49 Monthly Statistics Comparison

